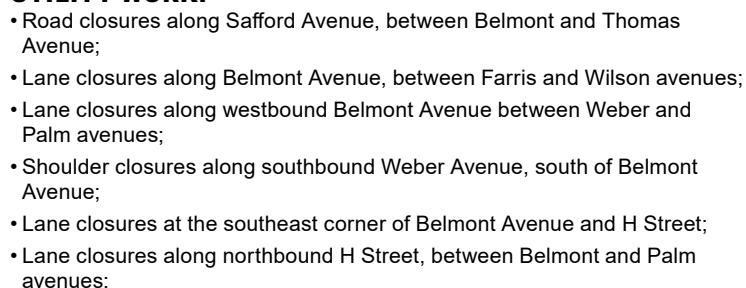




This work is part of Construction Package 1 (CP 1), the first 32-mile stretch of high-speed rail between Avenue 19 in Madera County and East American Avenue in Fresno County.





CONSTRUCTION ALERT

DETOUR INFORMATION:

BELMONT AVENUE TRUCK DETOUR

Trucks going north along H Street to Belmont Avenue will be detoured north on Palm Avenue to McKinley Avenue, east on McKinley Avenue, then south on Blackstone Avenue to Belmont Avenue.

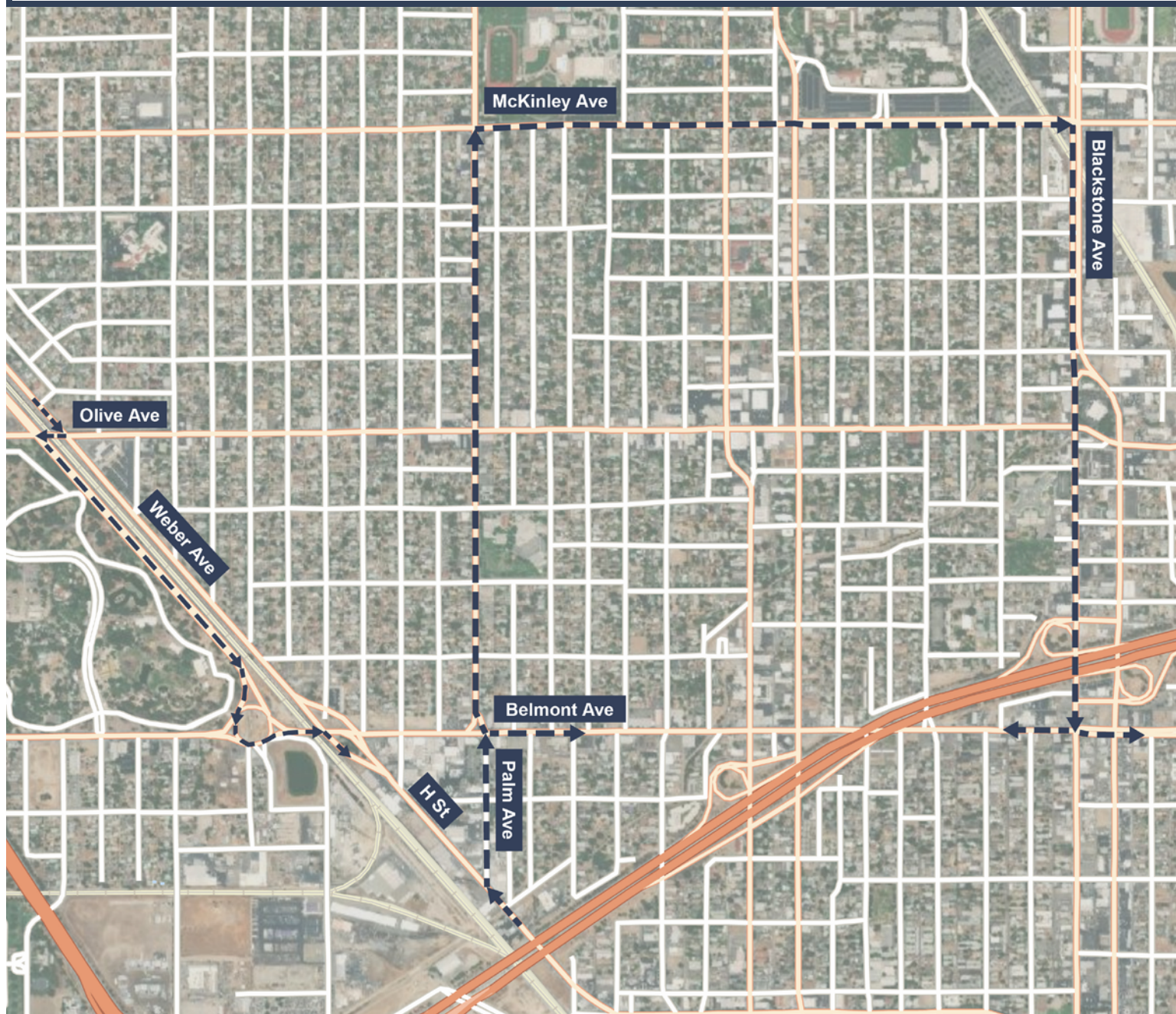
EASTBOUND BELMONT AVENUE DETOUR

Traffic going north on H Street to eastbound Belmont Avenue will be detoured north on Palm Avenue to Belmont Avenue.

SOUTHBOUND WEBER AVENUE DETOUR

Traffic going south on Weber Avenue will be detoured west on Olive Avenue, south on Golden State Boulevard, then east on Belmont Avenue to Weber Avenue / H Street.

Signage and flaggers will be in place to direct traffic. Traffic may experience delays. Pedestrian access will be restricted in certain areas. Access will be maintained to all businesses and property owners.



contact

AUGIE BLANCAS
CALIFORNIA HIGH-SPEED RAIL AUTHORITY
(559) 720-6695 | AUGIE.BLANCAS@HSR.CA.GOV

YADIRA LOPEZ
TUTOR-PERINI / ZACHRY / PARSONS
(559) 385-7025 | CONTACTCP1@TPZPJV.COM