



CONSTRUCTION ALERT

Intermittent Traffic Impacts Along And Near State Route 43 In Kings And Tulare Counties

Kings and Tulare County, Calif. – The California High-Speed Rail Authority (Authority), in cooperation with design-build contractor Dragados-Flatiron Joint Venture (DFJV), announces intermittent traffic impacts along State Route (SR) 43, Pickerell, Fourth and Santa Fe avenues in Kings and Tulare counties to transport pre-cast girders to the Tule River Viaduct. Hauling is scheduled from 6 a.m. to 3 p.m. and will continue through Tuesday, Oct. 31, 2023.

This work is part of Construction Package 2-3 (CP 2-3), the 65-mile stretch of high-speed rail between East American Avenue in Fresno County and one-mile north of the Tulare-Kern County line.

Closure And Detour Information:

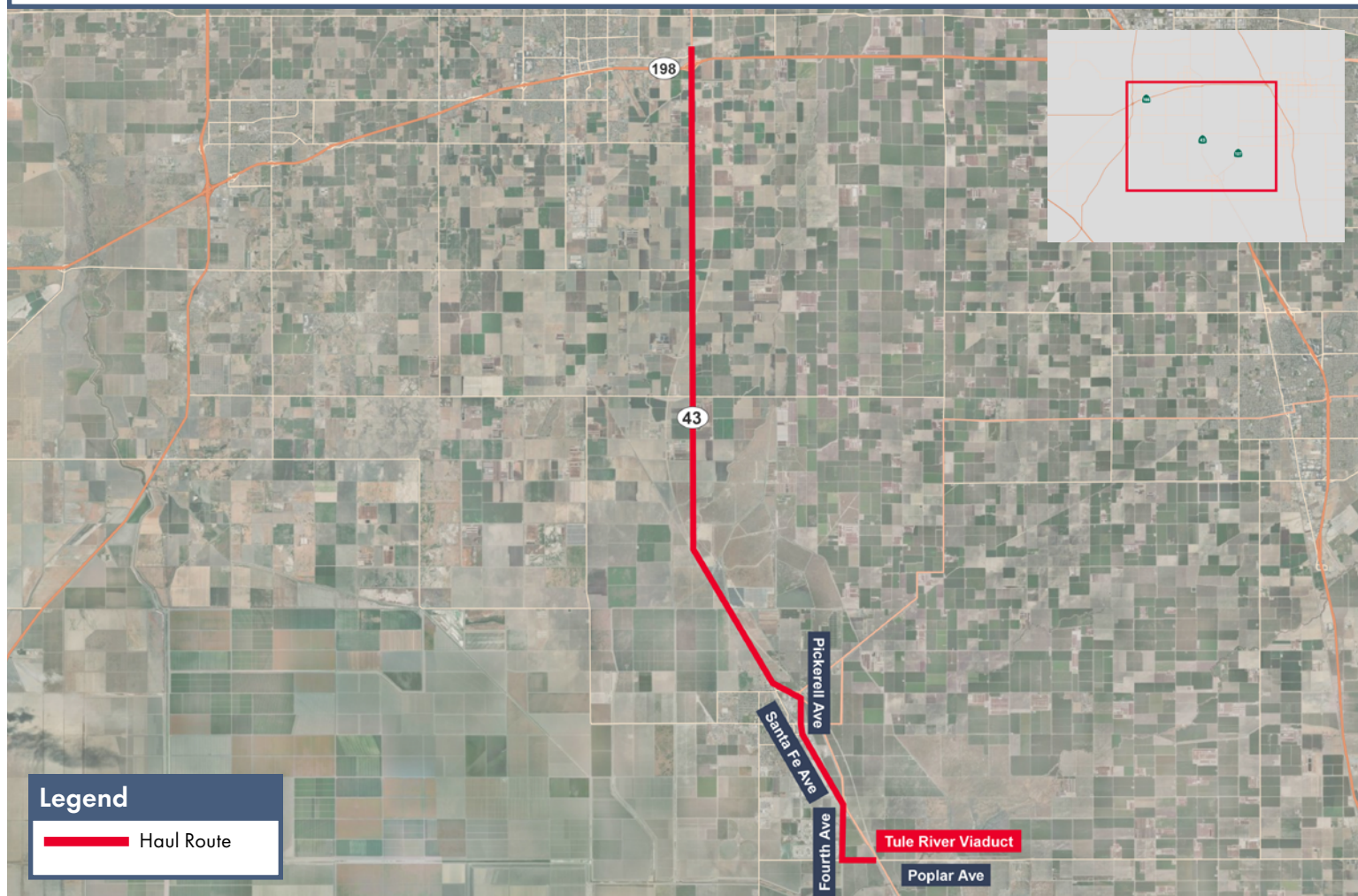
Intermittent traffic impacts along SR 43, Pickerell, Fourth and Santa Fe avenues in Kings and Tulare Counties to transport pre-cast girders to the Tule River Viaduct.

Hauling is scheduled from 6 a.m. to 3 p.m. and will continue through Tuesday, Oct. 31, 2023.

Haul Route

Girders will be transported south on SR 43, south on Pickerell Avenue, south on Santa Fe Avenue, south on Fourth Avenue, then east on Poplar Avenue to the Tule River Viaduct construction site.

Drivers may experience delays.



Legend

— Haul Route

Contact Us:

Augie Blancas
California High-Speed Rail
(559) 720-6695
Augie.Blancas@hsr.ca.gov

Ramiro Diaz
California High-Speed Rail
(559) 577-2246
Ramiro.Diaz@hsr.ca.gov
Para más información en Español.

Rachael Ray
Dragados-Flatiron Joint Venture
(559) 356-7234
pim@dfcp23.com

Scan QR Code For More Information,
Connect To Our Websites And Follow
Us On Social Media. This Information
Is Subject To Change.

