



CONSTRUCTION ALERT

Nighttime Closures Along H Street, Divisadero Street, And Roosevelt Avenue In Fresno

Fresno, Calif. – The California High-Speed Rail Authority (Authority), in cooperation with design-build contractor Tutor-Perini / Zachry / Parsons (TPZP), announces multiple nighttime closures along H Street, Divisadero Street, and Roosevelt Avenue in Fresno for utility work. Work is scheduled from 9 p.m. to 6 a.m. starting Tuesday, Sept. 5 through Wednesday, Oct. 4, 2023.

This work is part of Construction Package 1 (CP 1), the first 32-mile stretch of high-speed rail between Avenue 19 in Madera County and East American Avenue in Fresno County.

Closure And Detour Information:

Multiple Nighttime Closures:

- Road closure along northbound Roosevelt Avenue, between H and Divisadero streets;
- Road closure along southbound H Street, between Roosevelt Avenue and Divisadero Street;
- Lane closures along H Street, between Palm Avenue and El Dorado Street;

- Lane closure along Divisadero Street, between G and H streets.

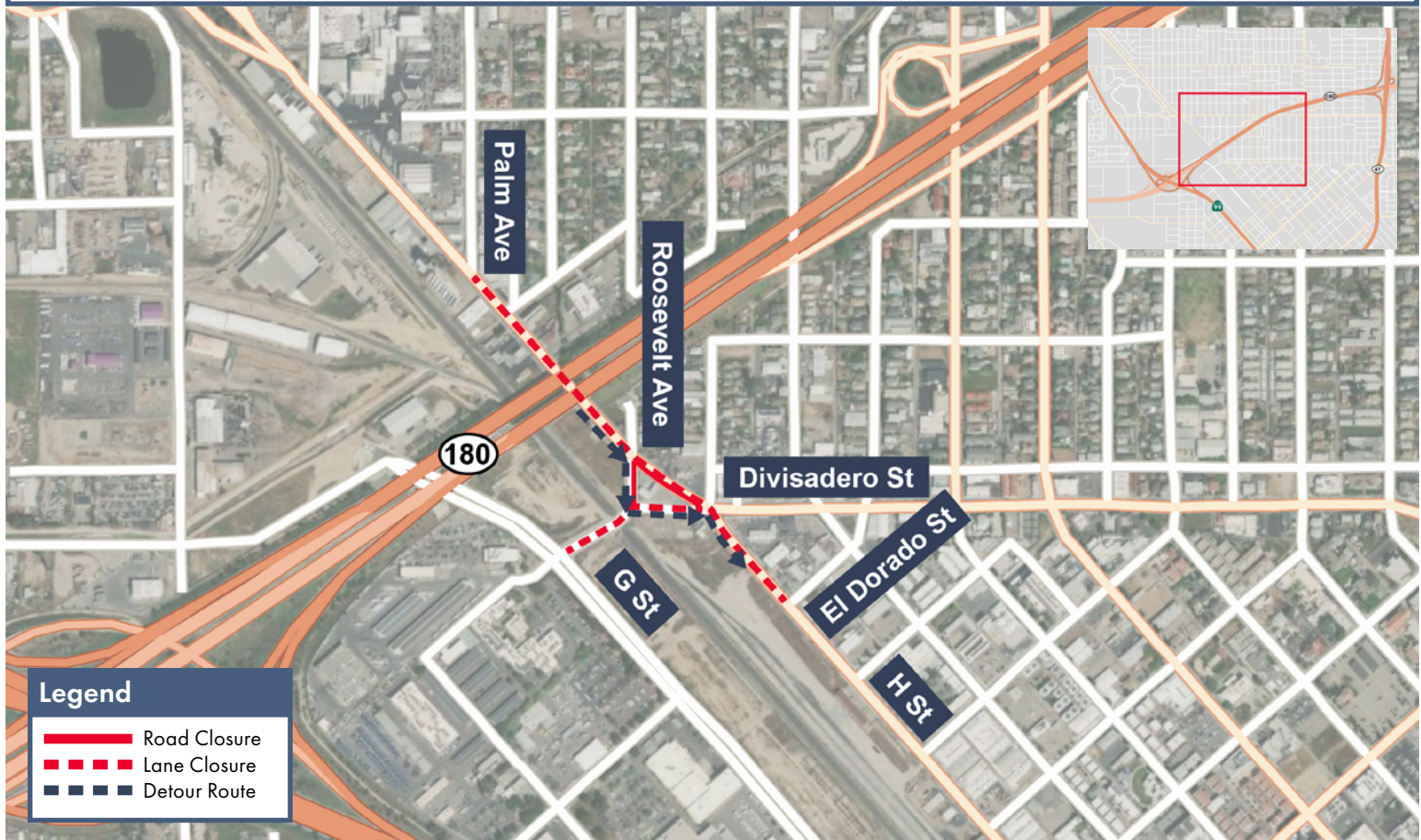
Work is scheduled from 9 p.m. to 6 a.m. starting Tuesday, Sept. 5 through Wednesday, Oct. 4, 2023.

Southbound H Street Detour

Traffic heading south on H Street will be detoured south on Roosevelt Avenue, east on Divisadero

Street, then south on H Street.

Signage will be in place to direct traffic. Access will be maintained to all businesses and property owners. Pedestrian access will be restricted.



Legend

- Road Closure
- - - Lane Closure
- - - Detour Route

Contact Us:

Augie Blancas
California High-Speed Rail
(559) 720-6695
Augie.Blancas@hsr.ca.gov

Ramiro Diaz
California High-Speed Rail
(559) 577-2246
Ramiro.Diaz@hsr.ca.gov
Para más información en Español.

Yadira Lopez
Tutor-Perini / Zachry / Parsons
(559) 385-7025
ContactCP1@tpzpjv.com

Scan QR Code For More Information,
Connect To Our Websites And Follow
Us On Social Media. This Information
Is Subject To Change.

