



CONSTRUCTION ALERT

Road Closure Along Manning Avenue In Fresno County

Fresno County, Calif. – The California High-Speed Rail Authority (Authority), in cooperation with design-build contractor Dragados-Flatiron Joint Venture (DFJV), announces a road closure on Manning Avenue, between Chance and Maple avenues in Fresno County for construction of high-speed rail grade separation. Work is scheduled to begin Friday, March 1, 2024 and will continue through March 2026.

This work is part of Construction Package 2-3 (CP 2-3), the 65-mile stretch of high-speed rail between East American Avenue in Fresno County and one-mile north of the Tulare-Kern County line.

Closure And Detour Information:

Road closure along Manning Avenue, between Chance and Maple avenues in Fresno County for construction of a high-speed rail grade separation.

Work is scheduled to begin Friday, March 1, 2024 and will continue through March 2026.

Eastbound Traffic

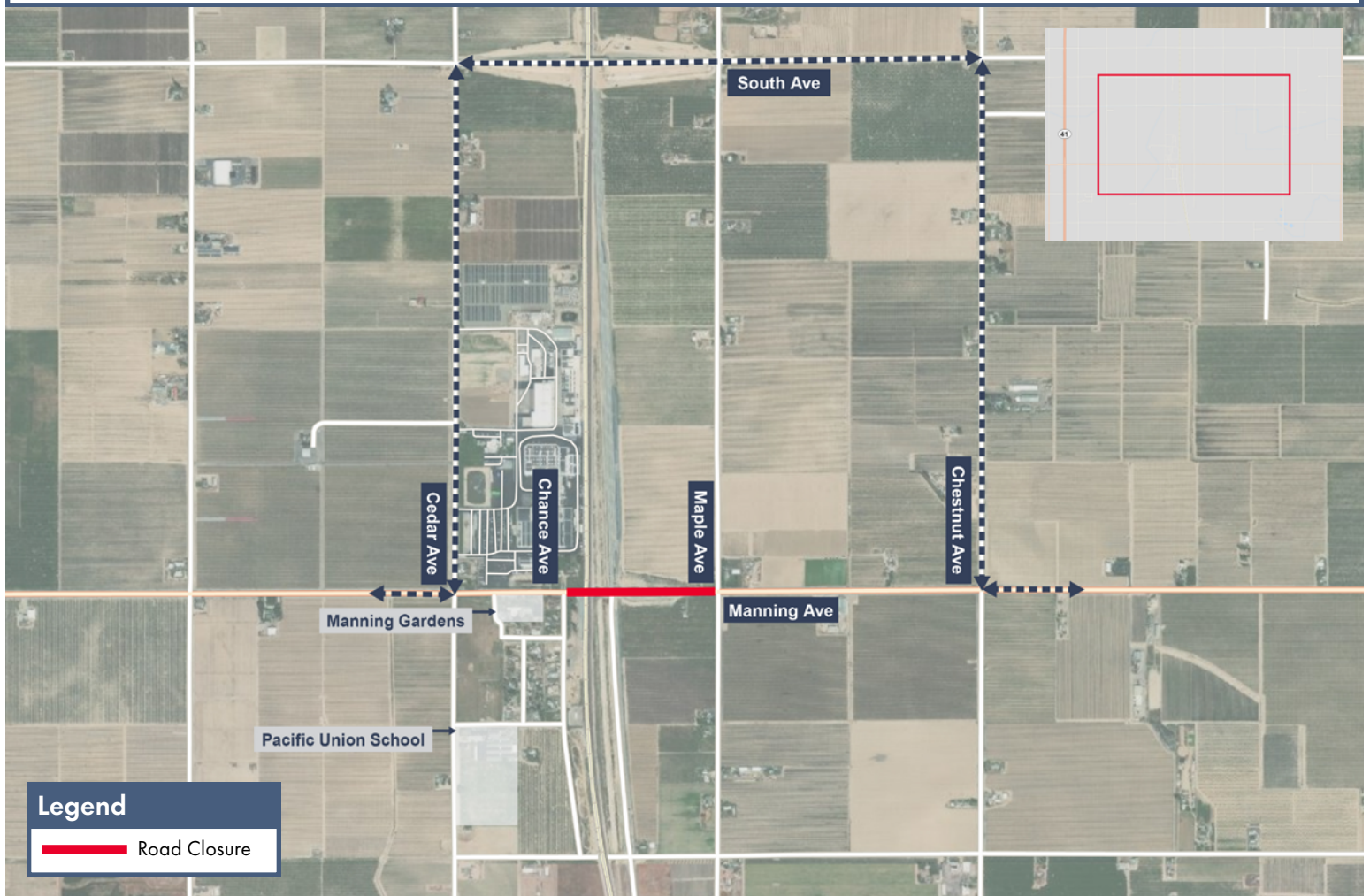
Traffic going eastbound on Manning Avenue will be detoured north on Cedar Avenue, east on South Avenue, then south on Chestnut Avenue to Manning Avenue.

Westbound Traffic

Traffic going westbound on Manning Avenue will

be detoured north on Chestnut Avenue, west on South Avenue, then south on Cedar Avenue to Manning Avenue.

Signage will be in place to direct traffic. Access will be maintained for all property and business owners.



Contact Us:

Augie Blancas
California High-Speed Rail
(559) 720-6695
Augie.Blancas@hsr.ca.gov

Ramiro Diaz
California High-Speed Rail
(559) 577-2246
Ramiro.Diaz@hsr.ca.gov
Para más información en Español.

Rachael Ray
Dragados-Flatiron Joint Venture
(559) 356-7234
pim@dfcp23.com

Scan QR Code For More Information,
Connect To Our Websites And Follow
Us On Social Media. This Information
Is Subject To Change.

