



CONSTRUCTION ALERT



Nighttime Closures Along State Route 198 In Kings County

Kings County, Calif. – The California High-Speed Rail Authority (Authority), in cooperation with design-build contractor Dragados-Flatiron Joint Venture (DFJV), announces nighttime closures along State Route (SR) 198, between Sixth Avenue and SR 43 in Kings County for work on the Hanford Viaduct. Work will include transporting and placing pre-cast concrete girders over the highway. Work is scheduled from 8 p.m. to 6 a.m. on Wednesday, May 29 and Thursday, May 30, 2024.

This work is part of Construction Package 2-3 (CP 2-3), the 65-mile stretch of high-speed rail between East American Avenue in Fresno County and one-mile north of the Tulare-Kern County line.

Closure And Detour Information:

Nighttime closure along westbound SR 198, between SR 43 and Sixth Avenue in Kings County. Work is scheduled for Wednesday, May 29, 2024

Nighttime closures along eastbound and westbound SR 198, between SR 43 and Sixth Avenue in Kings County. Work is scheduled for Wednesday, May 30, 2024.

Closures will be in effect from 8 p.m. to 6 a.m. on both nights.

Eastbound State Route 198 Traffic Detour

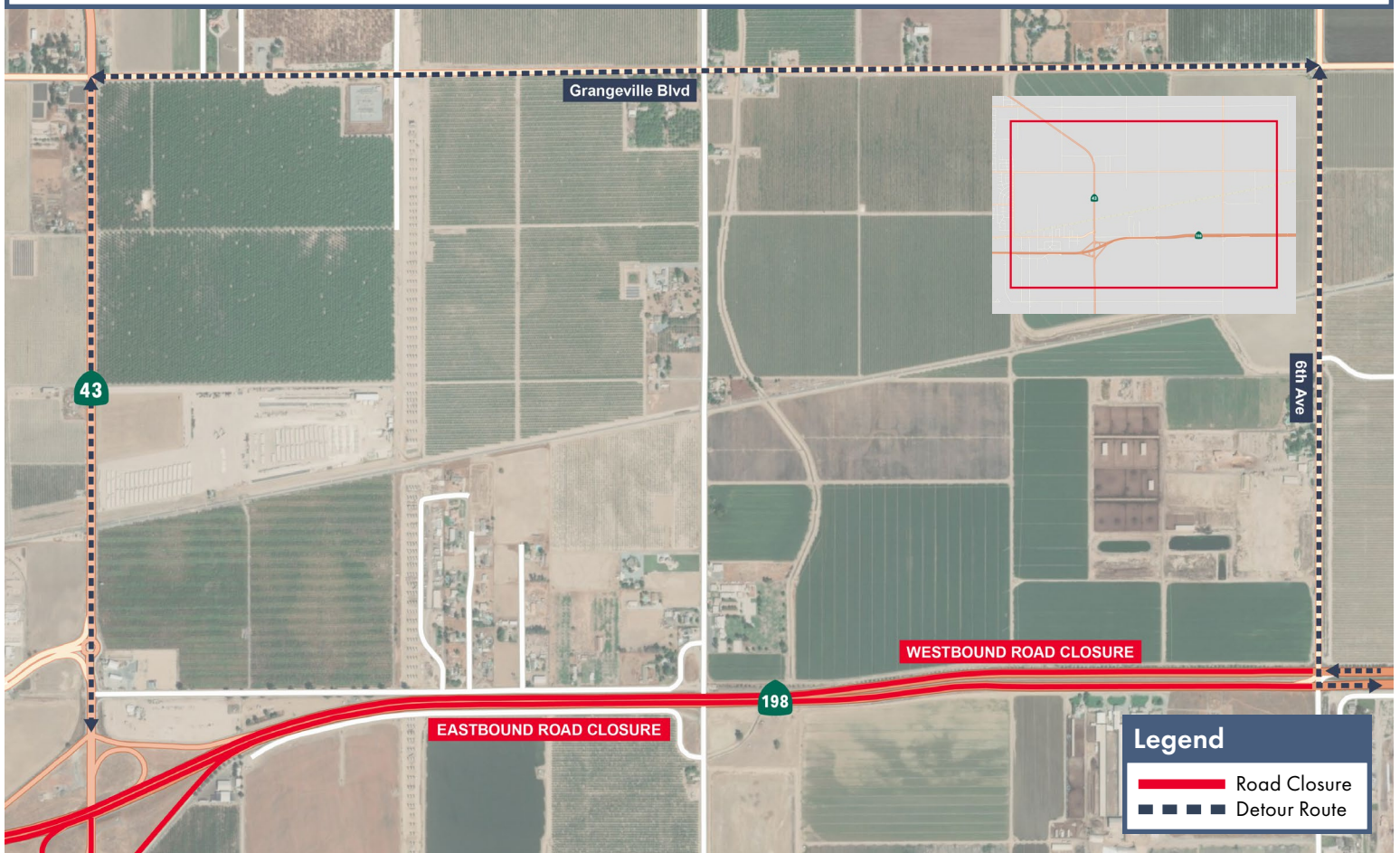
Traffic going eastbound on SR 198 will be detoured north on SR 43, east on Grangeville Boulevard, then south on Sixth Street to SR 198.

Westbound State Route 198 Traffic Detour

Traffic going westbound on SR 198 will

be detoured north on Sixth Street, west on Grangeville Boulevard, then south on SR 43 to SR 198.

Signage will be in place to direct traffic. Access will be maintained to all property and business owners.



Contact Us:

Augie Blancas
California High-Speed Rail
(559) 720-6695
Augie.Blancas@hsr.ca.gov

Ramiro Diaz
California High-Speed Rail
(559) 577-2246
Ramiro.Diaz@hsr.ca.gov
Para más información en Español.

Rachael Ray
Dragados-Flatiron Joint Venture
(559) 356-7234
pim@dfcp23.com

Scan QR Code For More Information,
Connect To Our Websites And Follow
Us On Social Media. This Information
Is Subject To Change.

