



CONSTRUCTION ALERT



Nighttime Closures Along State Route 198 In Kings County

Kings County, Calif. – The California High-Speed Rail Authority (Authority), in cooperation with design-build contractor Dragados-Flatiron Joint Venture (DFJV), announces nighttime closures along State Route (SR) 198, between SR 43 and Sixth Avenue in Kings County for ongoing work at the Hanford Viaduct. Work is scheduled from 8 p.m. to 6 a.m. for Wednesday, Feb. 5, 2025.

This work is part of Construction Package 2-3 (CP 2-3), the 65-mile stretch of high-speed rail between East American Avenue in Fresno County and one-mile north of the Tulare-Kern County line.

Closure And Detour Information:

Nighttime closures along SR 198, between SR 43 and Sixth Avenue in Kings County for continued work on the Hanford Viaduct.

Work is scheduled from 8 p.m. to 6 a.m. on Wednesday, Feb. 5, 2025.

Eastbound State Route 198 Traffic Detour

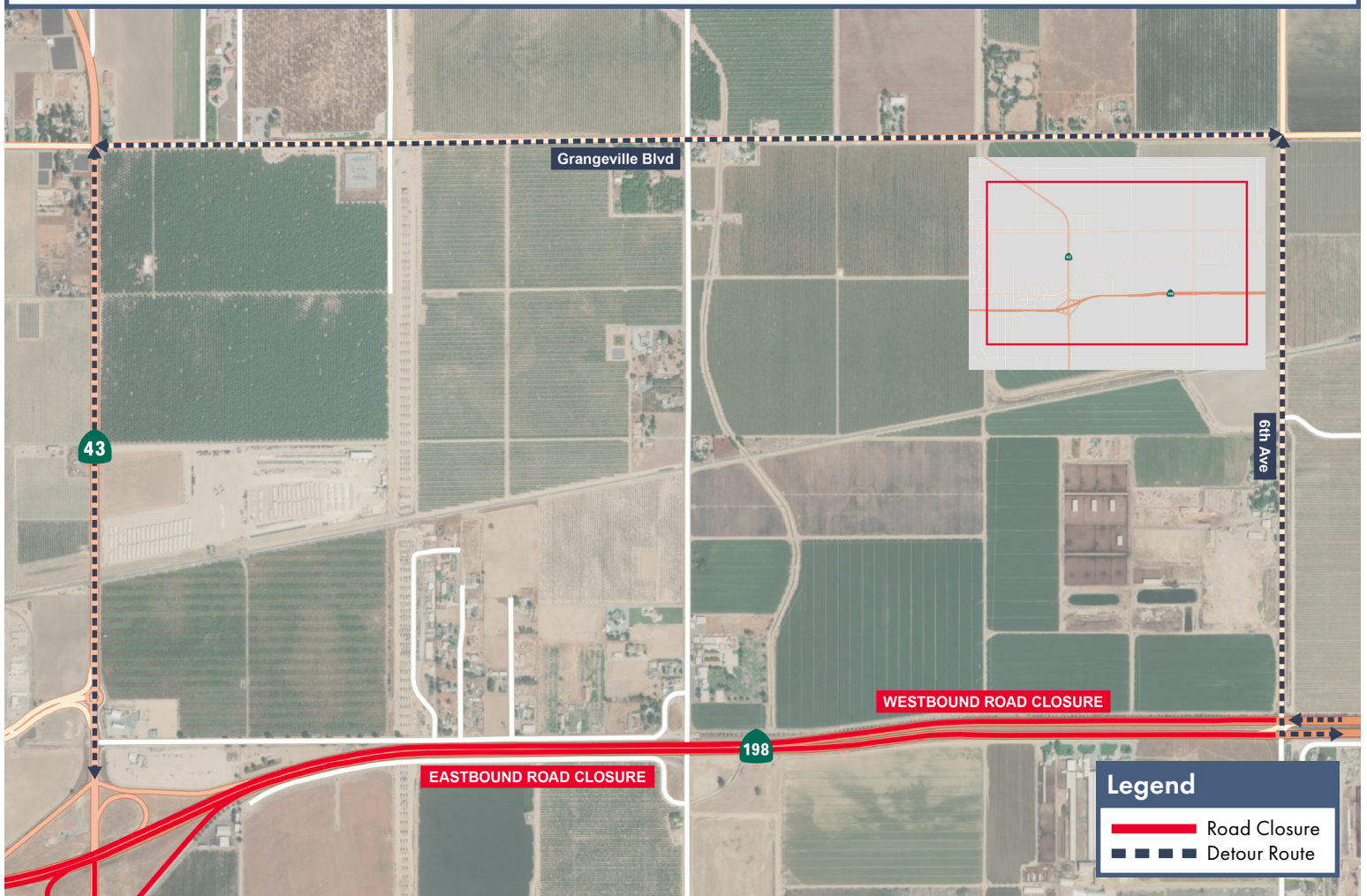
Traffic going eastbound on SR 198 will be detoured north on SR 43, east on

Grangeville Boulevard, then south on Sixth Avenue to SR 198.

Westbound State Route 198 Traffic Detour

Traffic going westbound on SR 198 will be detoured north on Sixth Avenue, west on Grangeville Boulevard, then south on SR 43 to SR 198.

Signage will be in place to direct traffic. Access will be maintained to all property and business owners.



Contact Us:

Augie Blancas
California High-Speed Rail
(559) 720-6695
Augie.Blancas@hsr.ca.gov

Ramiro Diaz
California High-Speed Rail
(559) 577-2246
Ramiro.Diaz@hsr.ca.gov
Para más información en Español.

Rachael Ray
Dragados-Flatiron Joint Venture
(559) 356-7234
pim@dfcp23.com

Scan QR Code For More Information,
Connect To Our Websites And Follow
Us On Social Media. This Information
Is Subject To Change.

