



# CONSTRUCTION ALERT

## Multiple Road Closures Along Weber Avenue And H Street In Fresno

**Fresno, Calif.** – The California High-Speed Rail Authority (Authority), in cooperation with design-build contractor Tutor-Perini / Zachry / Parsons (TPZP), announces multiple road closures along Weber Avenue and H Street in Fresno for road work. Work is scheduled to begin Monday, April 22 and will continue through December 2024.

*This work is part of Construction Package 1 (CP 1), the first 32-mile stretch of high-speed rail between Avenue 19 in Madera County and East American Avenue in Fresno County.*

### Closure And Detour Information:

#### Multiple Closures For Roadwork:

- Road closure along Weber Avenue, between Thomas and Belmont avenues in Fresno.
- Road closure along H Street, between Palm and Belmont avenues in Fresno.

**Closure is scheduled to begin Monday, April 22 and will continue through**

#### December 2024.

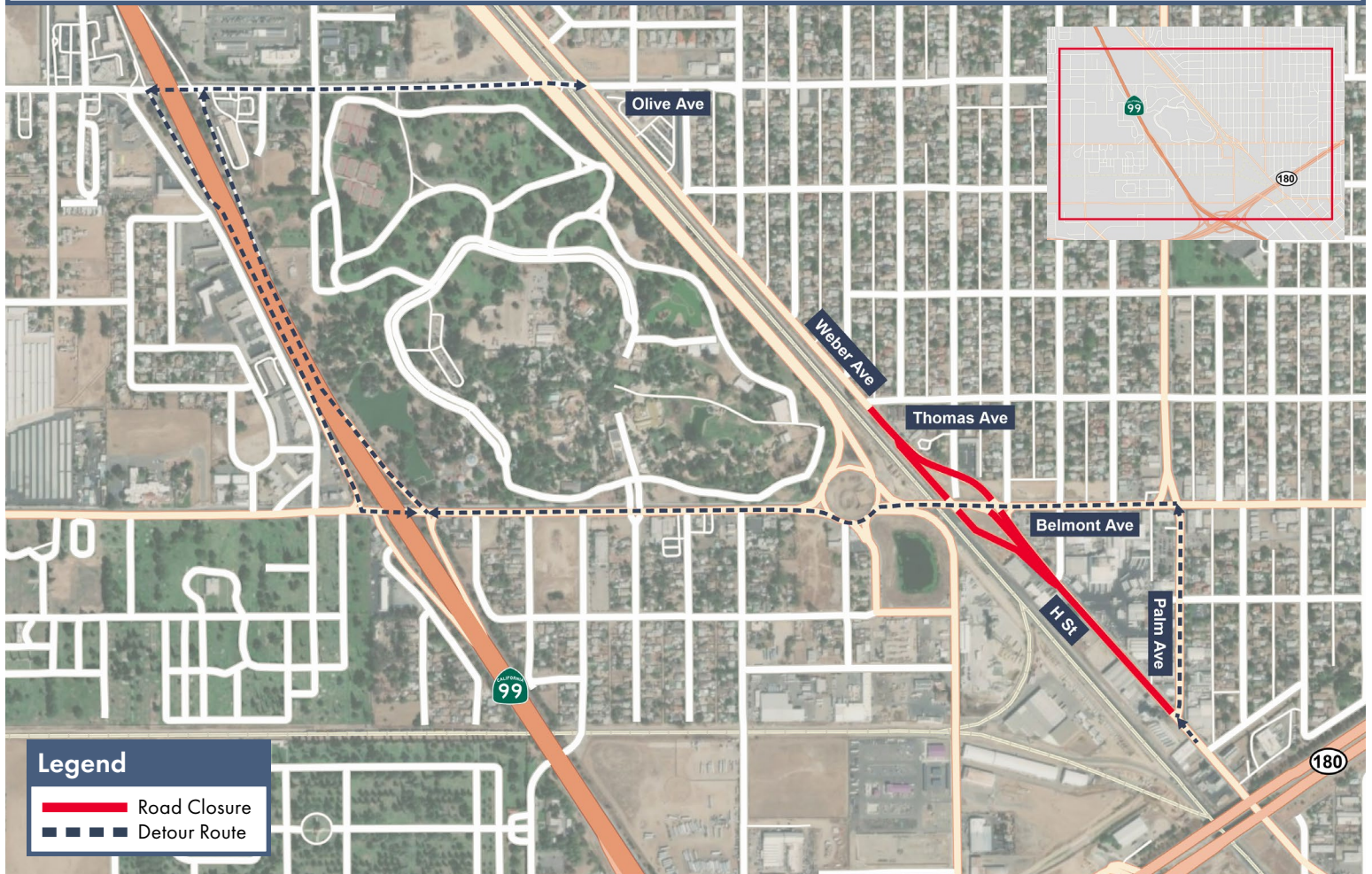
#### Northbound H Street Traffic Detour

Traffic going northbound on H Street to Weber Avenue will be detoured north on Palm Avenue, west on Belmont Avenue, north on State Route (SR) 99 to Olive Avenue, then east on Olive Avenue to Weber Avenue.

#### Southbound Weber Avenue Detour

Traffic going southbound on Weber Avenue will be detoured west on Olive Avenue, south on SR 99 to Belmont Avenue, east on Belmont Avenue, then south on Palm Avenue.

**Signage will be in place to direct traffic. Access will be maintained to all property and business owners**



#### Legend

- Road Closure
- Detour Route

### Contact Us:

Augie Blancas  
California High-Speed Rail  
(559) 720-6695  
Augie.Blancas@hsr.ca.gov

Ramiro Diaz  
California High-Speed Rail  
(559) 577-2246  
Ramiro.Diaz@hsr.ca.gov  
Para más información en Español.

Yadira Lopez  
Tutor-Perini / Zachry / Parsons  
(559) 385-7025  
ContactCP1@tpzpjv.com

Scan QR Code For More Information,  
Connect To Our Websites And Follow  
Us On Social Media. This Information  
Is Subject To Change.

