



CONSTRUCTION ALERT

Road Closure Along Road 26 In Madera County

Madera County, Calif. – The California High-Speed Rail Authority (Authority), in cooperation with design-build contractor Tutor-Perini / Zachry / Parsons (TPZP), announces a road closure along Road 26 between Avenue 19 and Club Drive in Madera County for ongoing construction of a high-speed rail grade separation. Work is scheduled from 7 a.m. to 5 p.m. starting Monday, Dec. 8, through Friday, Dec. 26, 2025.

This work is part of Construction Package 1 (CP 1), the first 32-mile stretch of high-speed rail between Avenue 19 in Madera County and East American Avenue in Fresno County.

Closure And Detour Information:

Road closure along Road 26, between Avenue 19 and Club Drive in Madera County for ongoing construction of a high-speed rail grade separation.

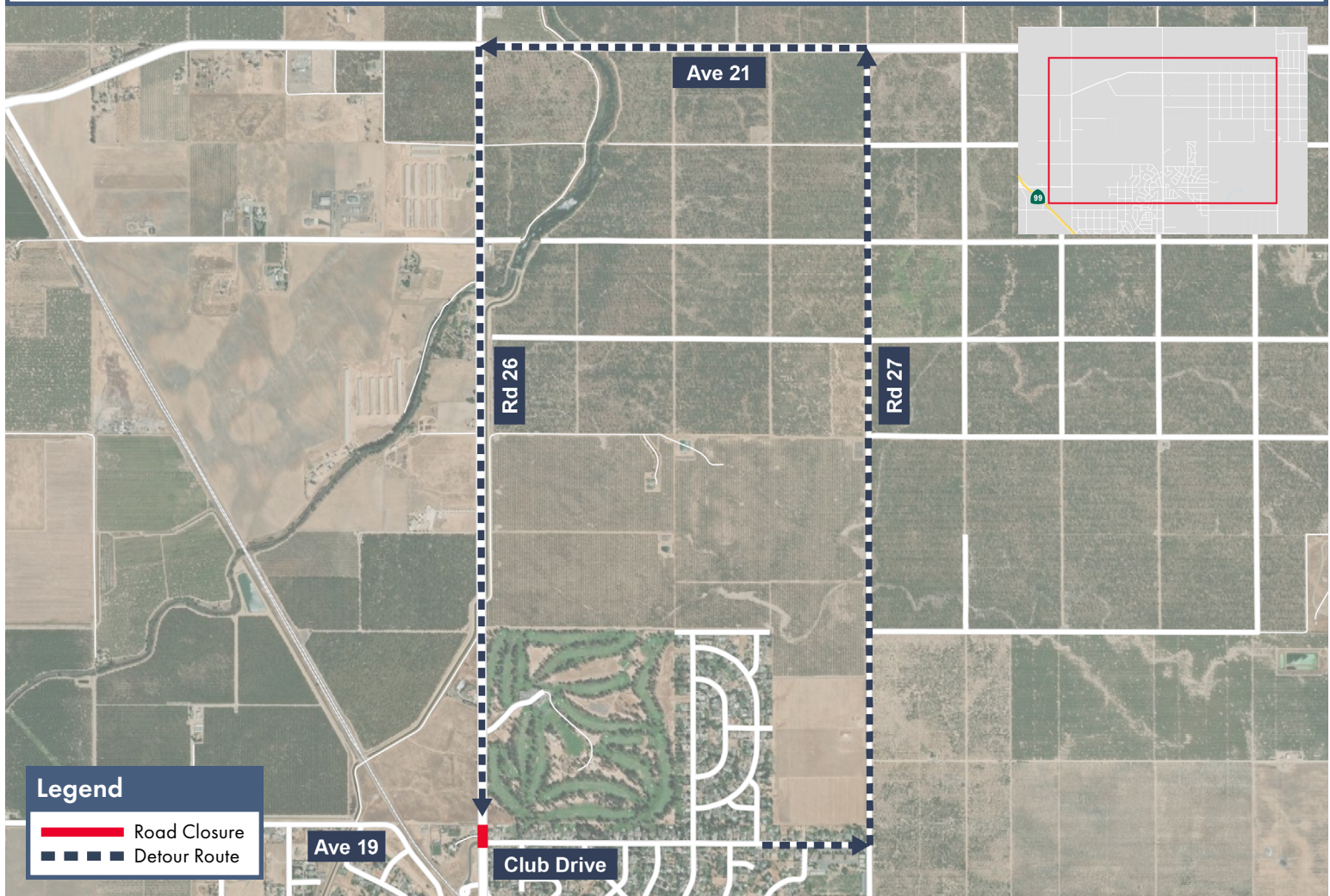
Work is scheduled from 7 a.m. to 5 p.m. starting Monday, Dec. 8, through Friday, Dec. 26, 2025.

Amtrak Traffic Detour

Traffic going westbound along Club Drive to access Amtrak will be detoured

east on Club Drive, north on Road 27, east on Avenue 21, then south on Road 26 to Amtrak.

Signage and flaggers will be in place to direct traffic. Lighting and noise levels will be monitored and maintained at required levels following Cal/OSHA standards and requirements. Access will be maintained for all property and business owners.



Legend

- Road Closure
- - - Detour Route

Contact Us:

Augie Blancas
California High-Speed Rail
(559) 720-6695
Augie.Blancas@hsr.ca.gov

Ramiro Diaz
California High-Speed Rail
(559) 577-2246
Ramiro.Diaz@hsr.ca.gov
Para más información en Español.

Yadira Lopez
Tutor-Perini / Zachry / Parsons
(888) 860-1868
ContactCP1@tpzpjv.com

Scan QR Code For More Information,
Connect To Our Websites And Follow
Us On Social Media. This Information
Is Subject To Change.

