



CONSTRUCTION ALERT

Intermittent Traffic Impacts Along And Near State Route 43 In Fresno, Kings And Tulare Counties

Fresno, Kings and Tulare Counties, Calif. – The California High-Speed Rail Authority (Authority), in cooperation with design-build contractor Dragados-Flatiron Joint Venture (DFJV), announces intermittent traffic impacts along State Route (SR) 43 in Fresno, Kings and Tulare counties to transport pre-cast concrete girders to a high-speed rail construction site. Hauling is scheduled intermittently between 12 a.m. and 10 a.m. from Monday, Oct. 7 through Friday, Oct. 11, 2024.

This work is part of Construction Package 2-3 (CP 2-3), the 65-mile stretch of high-speed rail between East American Avenue in Fresno County and one-mile north of the Tulare-Kern County line.

Closure And Detour Information:

Intermittent traffic impacts along southbound State Route (SR) 43 between, Davis Avenue and south of Avenue 144 in Fresno, Kings and Tulare counties to transport pre-cast concrete girders to a high-speed rail construction site.

Hauling is scheduled intermittently

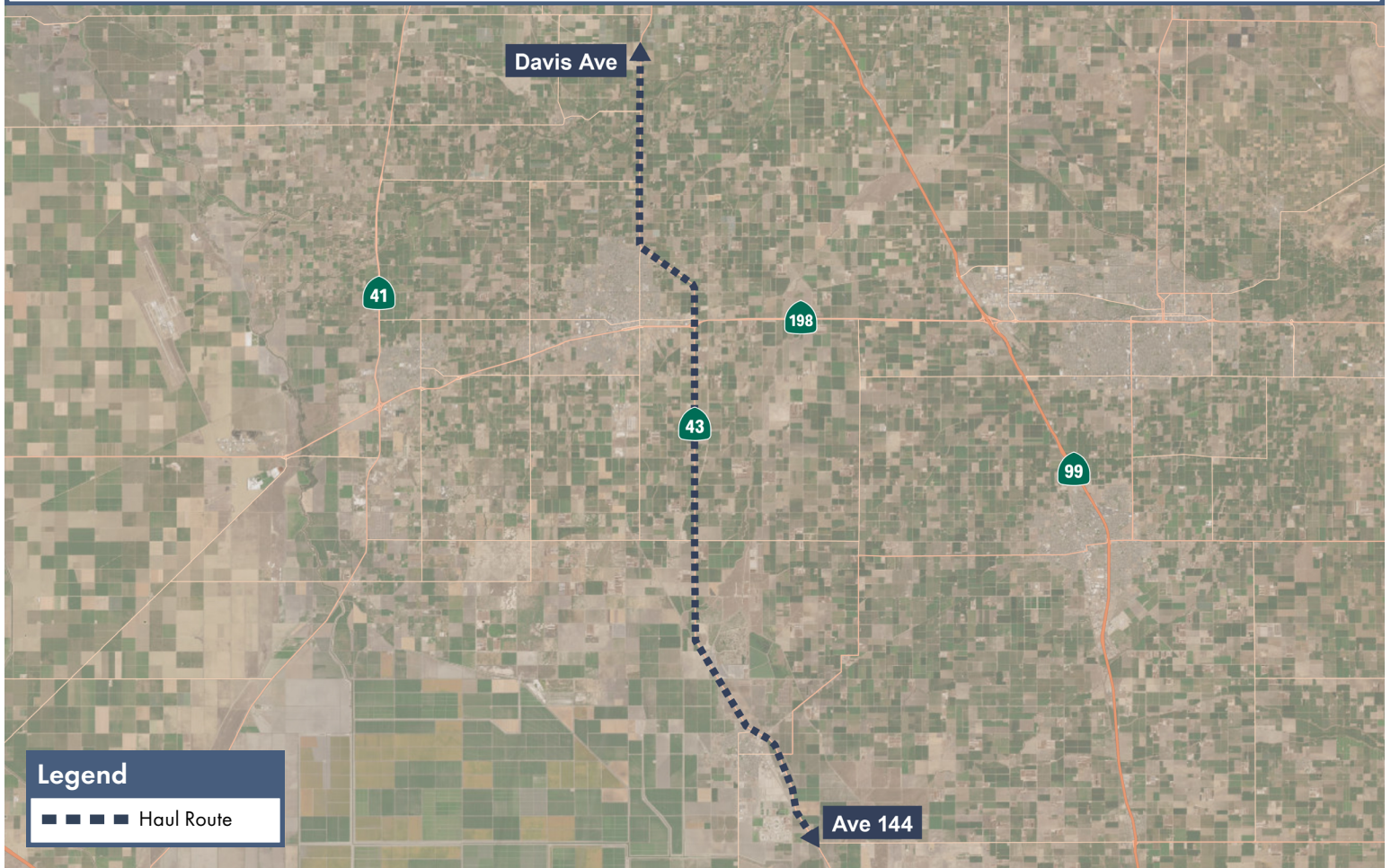
between 12 a.m. and 10 a.m. from Monday, Oct. 7 through Friday, Oct. 11, 2024.

Haul Route

Girders will be transported along southbound SR 43 from a private road south of Davis Avenue

to a high-speed rail construction site south of Avenue 144.

Flaggers and pilot cars will be in place to direct traffic. California Highway Patrol will provide escort during transport.



Contact Us:

Augie Blancas
California High-Speed Rail
(559) 720-6695
Augie.Blancas@hsr.ca.gov

Ramiro Diaz
California High-Speed Rail
(559) 577-2246
Ramiro.Diaz@hsr.ca.gov
Para más información en Español.

Rachael Ray
Dragados-Flatiron Joint Venture
(559) 356-7234
pim@dfcp23.com

Scan QR Code For More Information, Connect To Our Websites And Follow Us On Social Media. This Information Is Subject To Change.

