



CONSTRUCTION ALERT

Multiple Closures Along Golden State Boulevard, Swift And Ashlan Avenues In Fresno

Fresno, Calif. – The California High-Speed Rail Authority (Authority), in cooperation with design-build contractor Tutor-Perini / Zachry / Parsons (TPZP), announces multiple closures along Golden State Boulevard, Swift, and Ashlan avenues in Fresno for utility work. Work is scheduled from 9 p.m. to 6 a.m. and will continue through Friday, Nov. 8, 2024.

This work is part of Construction Package 1 (CP 1), the first 32-mile stretch of high-speed rail between Avenue 19 in Madera County and East American Avenue in Fresno County.

Closure And Detour Information:

Multiple Closures:

- Lane closures along southbound Golden State Boulevard, between Cornelia and Shaw avenues;
- Road closure along southbound Golden State Boulevard, between Shaw and Ashlan avenues;
- Road closure along northbound Golden State Boulevard, north of Ashlan Avenue;
- Lane closures along northbound State Route (SR) 99 off-ramp to Ashlan Avenue;
- Lane closures along Ashlan Avenue, between northbound SR 99 on-ramp and Feland Avenue.

Work is scheduled from 9 p.m. to 6 a.m. and will continue through Friday, Nov. 8, 2024.

Southbound Golden State Boulevard To Eastbound Ashlan Avenue Detour

Traffic will be detoured east on Shaw Avenue, south on Marty Avenue, south on Valentine Avenue, then east on Ashlan Avenue.

Southbound Golden State Boulevard To Westbound Ashlan Avenue Detour

Traffic will be detoured west on Shaw Avenue, south on Polk Avenue, then west on Ashlan Avenue.

Southbound Golden State Boulevard Detour

Traffic going south on Golden State Boulevard from Shaw Avenue will be detoured west on Shaw Avenue, south on Polk Avenue, west on Ashlan Avenue to Golden State Boulevard.

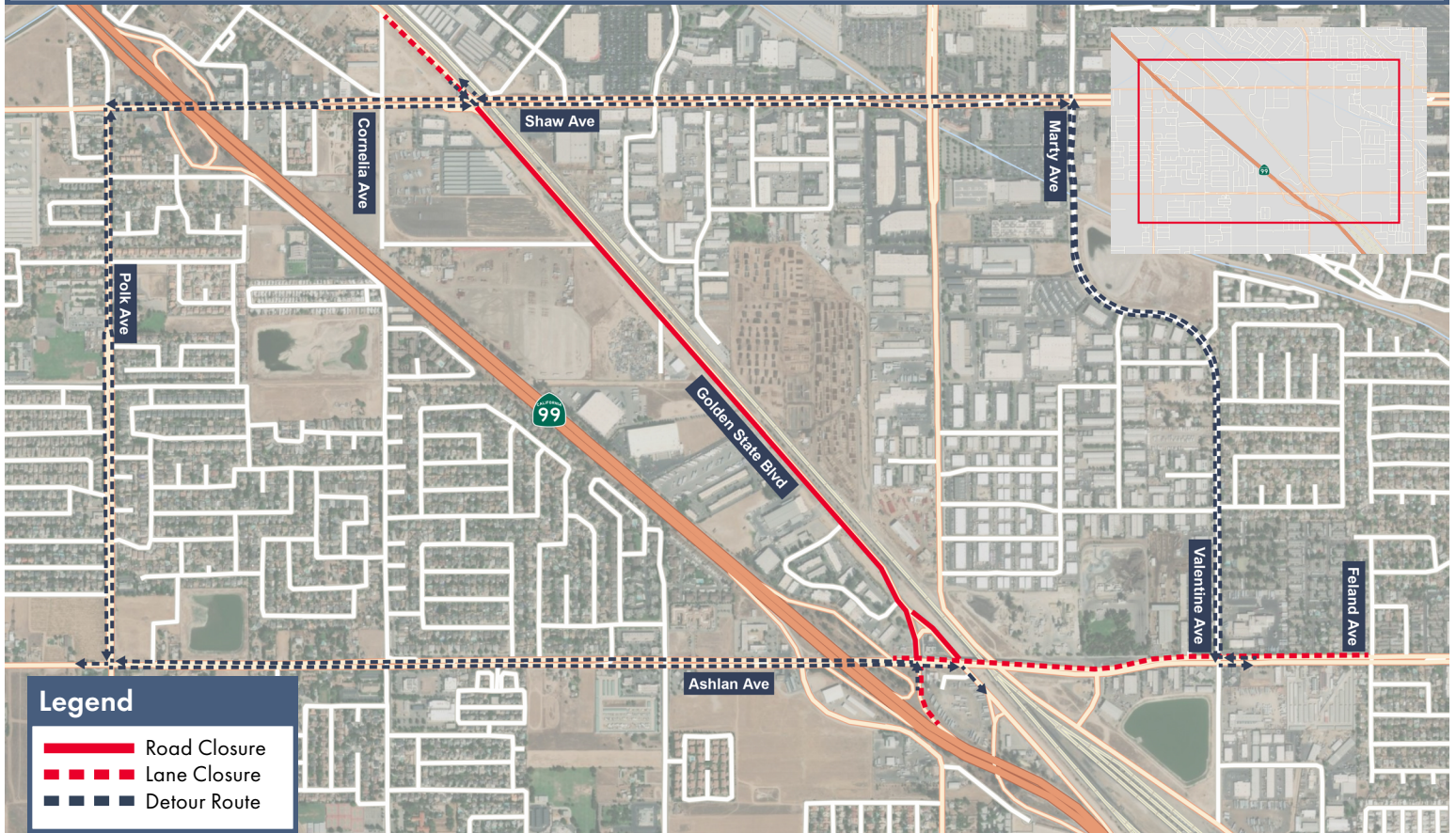
Westbound Ashlan Avenue To Northbound Golden State Boulevard Detour

Traffic will be detoured north on Valentine Avenue, north on Marty Avenue, west on Shaw Avenue, then north on Golden State Boulevard.

Northbound Sr 99 Off-Ramp To Northbound Golden State Boulevard Detour

Traffic going northbound on Golden State Boulevard from the northbound SR 99 off-ramp will be detoured west on Ashlan Avenue, north on Polk Avenue, then east on Shaw Avenue to Golden State Boulevard.

Signage and flaggers will be in place to direct traffic. Access will be maintained to all businesses and property owners.



Legend

- Road Closure
- - - Lane Closure
- - - Detour Route

Contact Us:

Augie Blancas
California High-Speed Rail
(559) 720-6695
Augie.Blancas@hsr.ca.gov

Ramiro Diaz
California High-Speed Rail
(559) 577-2246
Ramiro.Diaz@hsr.ca.gov
Para más información en Español.

Yadira Lopez
Tutor-Perini / Zachry / Parsons
(888) 860-1868
ContactCP1@tpzpjv.com

Scan QR Code For More Information,
Connect To Our Websites And Follow
Us On Social Media. This Information
Is Subject To Change.

