



# CONSTRUCTION ALERT

## Intermittent Lane Closures Along Olive Avenue In Fresno

**Fresno, Calif.** – The California High-Speed Rail Authority (Authority), in cooperation with design-build contractor Tutor-Perini / Zachry / Parsons (TPZP), announces intermittent lane closures along Olive Avenue, between West and Fruit avenues in Fresno for utility work. Work is scheduled from 9 a.m. to 4 p.m. starting Monday, Oct. 28 through Friday, Nov. 11, 2024.

*This work is part of Construction Package 1 (CP 1), the first 32-mile stretch of high-speed rail between Avenue 19 in Madera County and East American Avenue in Fresno County.*

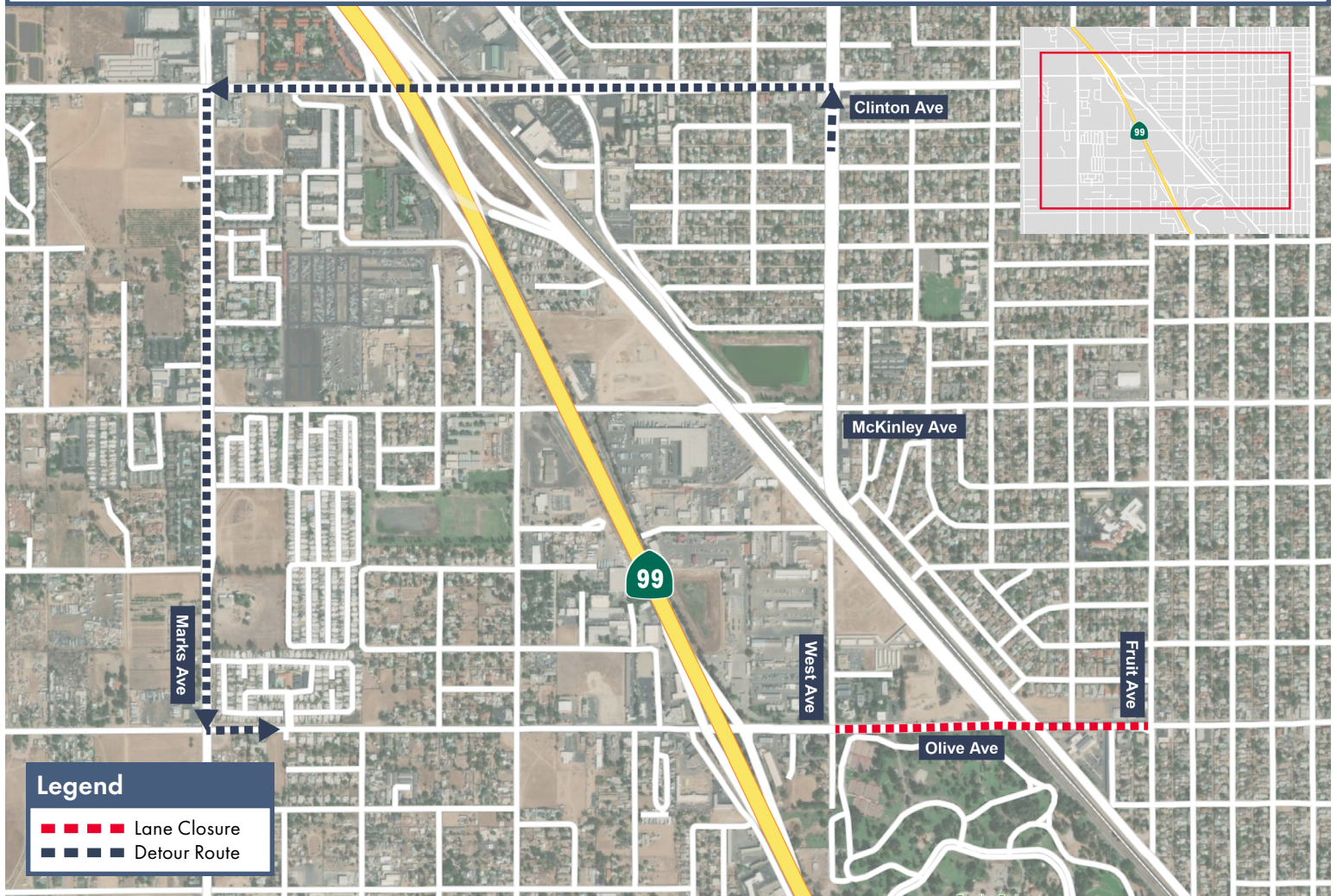
### Closure And Detour Information:

Intermittent lane closures along Olive Avenue, between West and Fruit avenues in Fresno for utility work.

**Work is scheduled from 9 a.m. to 4 p.m. starting Monday, Oct. 28 through Friday, Nov. 11, 2024.**

**Westbound Olive Avenue Truck Detour**  
Truck traffic along westbound McKinley Avenue to Olive Avenue will be detoured north along West Avenue, west on Clinton Avenue, then south on Marks Avenue onto Olive Avenue.  
**Signage will be in place to direct traffic.**

**Access to all businesses and residents will be maintained.**



### Contact Us:

Augie Blancas  
California High-Speed Rail  
(559) 720-6695  
Augie.Blancas@hsr.ca.gov

Ramiro Diaz  
California High-Speed Rail  
(559) 577-2246  
Ramiro.Diaz@hsr.ca.gov  
Para más información en Español.

Yadira Lopez  
Tutor-Perini / Zachry / Parsons  
(888) 860-1868  
ContactCP1@tpzpjv.com

Scan QR Code For More Information,  
Connect To Our Websites And Follow  
Us On Social Media. This Information  
Is Subject To Change.

