



CONSTRUCTION ALERT

Intermittent Lane Closures Along H Street In Fresno

Fresno, Calif. – The California High-Speed Rail Authority (Authority), in cooperation with design-build contractor Tutor-Perini / Zachry / Parsons (TPZP), announces intermittent lane closures along H Street, between Palm and Roosevelt avenues in Fresno for utility work. Work will continue through Friday, Oct. 25, 2024.

This work is part of Construction Package 1 (CP 1), the first 32-mile stretch of high-speed rail between Avenue 19 in Madera County and East American Avenue in Fresno County.

Closure And Detour Information:

Intermittent lane closures along H Street, between Palm and Roosevelt avenues in Fresno for utility work.

Work will continue through Friday, Oct. 25, 2024.

Northbound H Street Detour

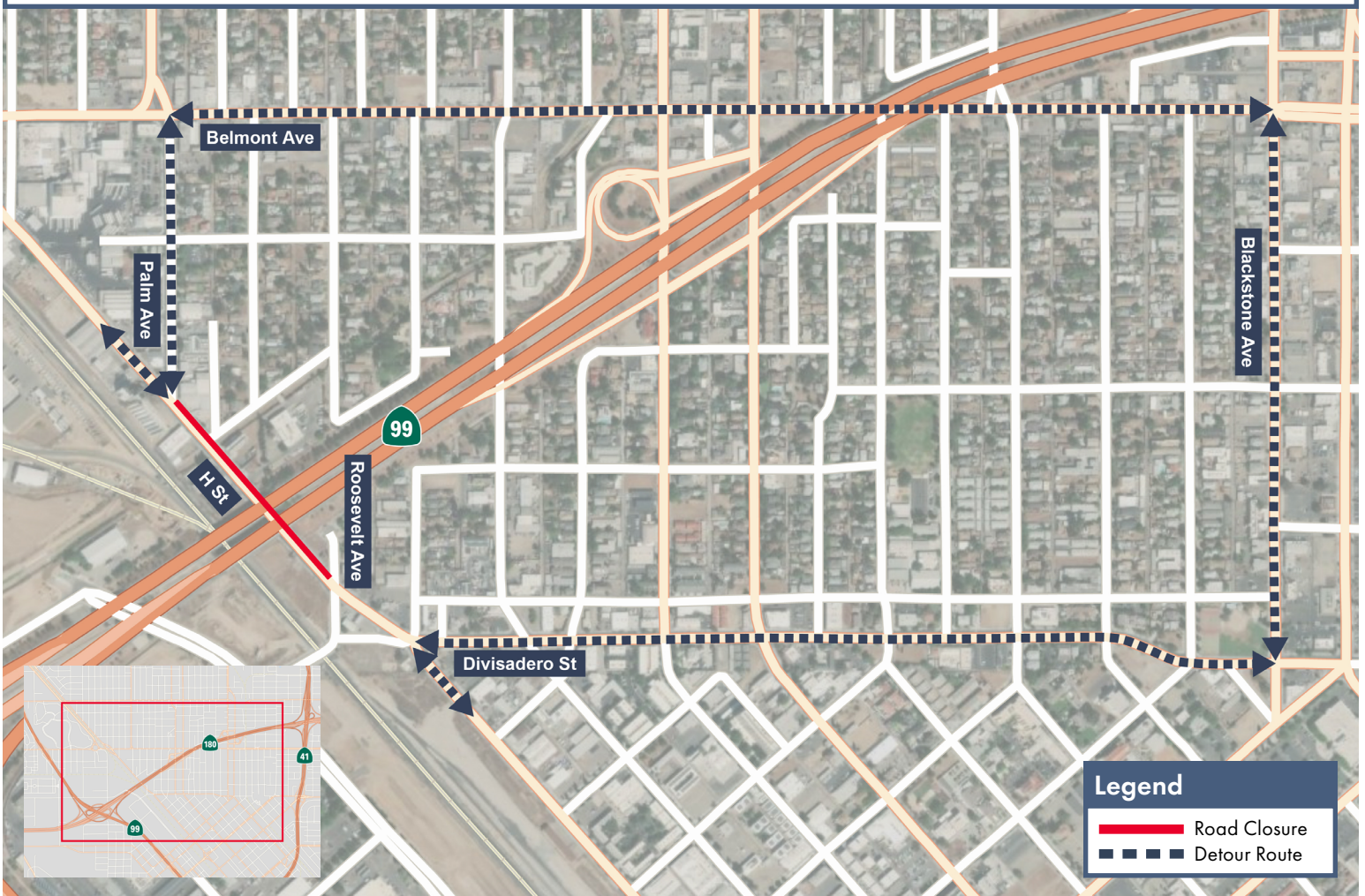
Traffic going northbound along H Street will be

detoured east on Divisadero Street, north on Blackstone Avenue, west on Belmont Avenue, then south on Palm Avenue.

Southbound H Street Detour

Traffic going southbound along H Street will be detoured north on Palm Avenue, east on Belmont Avenue, south on Blackstone Avenue, then west on Divisadero Street.

Signage will be in place to direct traffic. Pedestrian access will be restricted in some areas.



Legend

- Road Closure
- - - - - Detour Route

Contact Us:

Augie Blancas
California High-Speed Rail
(559) 720-6695
Augie.Blancas@hsr.ca.gov

Ramiro Diaz
California High-Speed Rail
(559) 577-2246
Ramiro.Diaz@hsr.ca.gov

Yadira Lopez
Tutor-Perini / Zachry / Parsons
(559) 385-7025
ContactCP1@tpzpjv.com

Scan QR Code For More Information,
Connect To Our Websites And Follow
Us On Social Media. This Information
Is Subject To Change.



Para más información en Español.