



# CONSTRUCTION ALERT

## Nighttime Lane Closure Along Westbound Shaw Avenue In Fresno

**Fresno, Calif.** – The California High-Speed Rail Authority (Authority), in cooperation with design-build contractor Tutor-Perini / Zachry / Parsons (TPZP), announces a nighttime lane closure along westbound Shaw Avenue, between Jennifer and El Capitan avenues in Fresno for utility work. Work is scheduled from 9 p.m. to 6 a.m. starting Sunday, Oct. 6 through Thursday, Oct. 17, 2024.

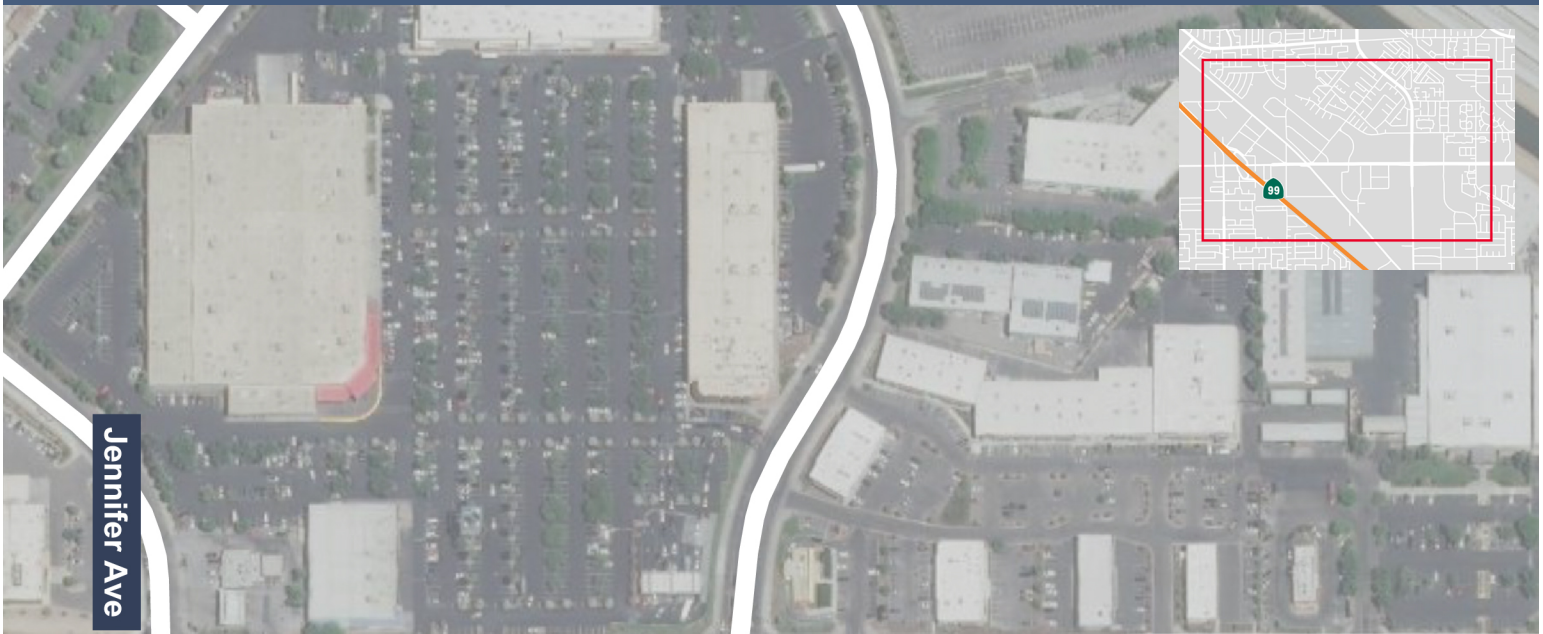
*This work is part of Construction Package 1 (CP 1), the first 32-mile stretch of high-speed rail between Avenue 19 in Madera County and East American Avenue in Fresno County.*

### Closure And Detour Information:

Nighttime lane closure along westbound Shaw Avenue between Jennifer and El Capitan avenues in Fresno for utility work.

**Work is scheduled from 9 p.m. to 6 a.m. starting Sunday, Oct. 6 through Thursday, Oct. 17, 2024.**

**Signage will be in place to direct traffic. Access to driveways will be maintained for all property owners.**



Jennifer Ave

Shaw Ave

El Capitan Ave

#### Legend

■ ■ ■ ■ Lane Closure

### Contact Us:

Augie Blancas  
California High-Speed Rail  
(559) 720-6695  
Augie.Blancas@hsr.ca.gov

Ramiro Diaz  
California High-Speed Rail  
(559) 577-2246  
Ramiro.Diaz@hsr.ca.gov  
Para más información en Español.

Yadira Lopez  
Tutor-Perini / Zachry / Parsons  
(888) 860-1868  
ContactCP1@tpzpjv.com

Scan QR Code For More Information,  
Connect To Our Websites And Follow  
Us On Social Media. This Information  
Is Subject To Change.

