



CONSTRUCTION ALERT

Intermittent Traffic Impacts Along Avenue 72, Road 120 And Avenue 56 In Tulare County

Tulare County, Calif. – The California High-Speed Rail Authority (Authority), in cooperation with design-build contractor Dragados-Flatiron Joint Venture (DFJV), announces intermittent traffic impacts along Avenue 72, Road 120 and Avenue 56 in Tulare County to transport materials to a high-speed rail construction site. Hauling is scheduled from 6 a.m. to 6 p.m. starting Friday, Nov. 1 through Friday, Nov. 22, 2024.

This work is part of Construction Package 2-3 (CP 2-3), the 65-mile stretch of high-speed rail between East American Avenue in Fresno County and one-mile north of the Tulare-Kern County line.

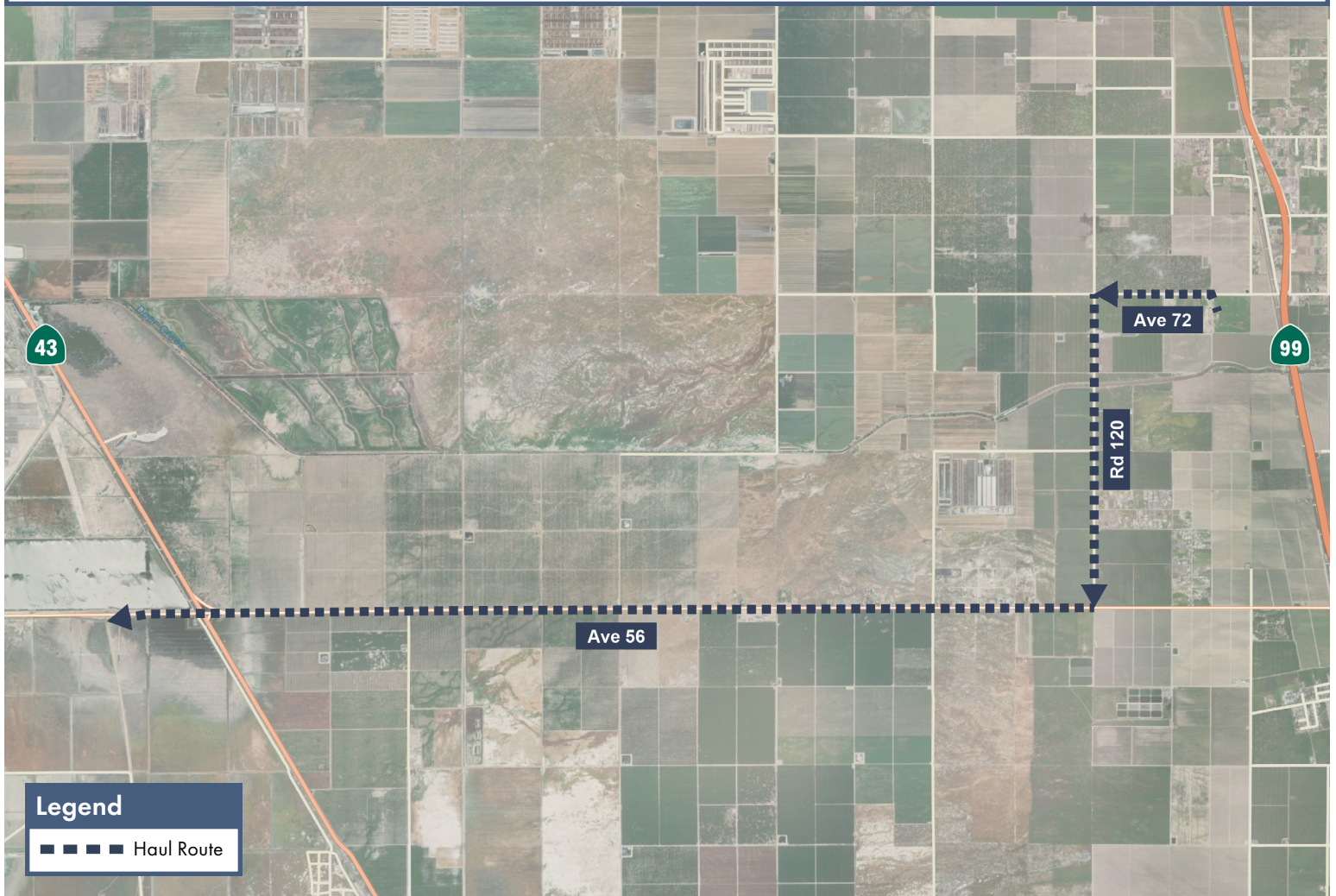
Closure And Detour Information:

Intermittent traffic impacts along Avenue 72, Road 120 and Avenue 56 in Tulare County to transport materials to a high-speed rail construction site.

Hauling is scheduled from 6 a.m. to 6 p.m. starting Friday, Nov. 1 through Friday, Nov. 22, 2024.

Haul Route
Material will be hauled west along Avenue 72, south on Road 120, and west on Avenue 56.

Drivers may experience delays. Access will be maintained for all property and business owners.



Contact Us:

Augie Blancas
California High-Speed Rail
(559) 720-6695
Augie.Blancas@hsr.ca.gov

Ramiro Diaz
California High-Speed Rail
(559) 577-2246
Ramiro.Diaz@hsr.ca.gov
Para más información en Español.

Rachael Ray
Dragados-Flatiron Joint Venture
(559) 356-7234
pim@dfcp23.com

Scan QR Code For More Information, Connect To Our Websites And Follow Us On Social Media. This Information Is Subject To Change.

