



CONSTRUCTION ALERT

Intermittent Traffic Impacts Along State Route 43 In Kings County

Kings County, Calif. – The California High-Speed Rail Authority (Authority), in cooperation with design-build contractor Dragados-Flatiron Joint Venture (DFJV), announces intermittent traffic impacts along State Route (SR) 43, between Pickerell and Oregon avenues in Kings County for road work. Work is scheduled from 7 p.m. to 7 a.m. starting Thursday, Oct. 31 through Thursday, Nov. 14, 2024.

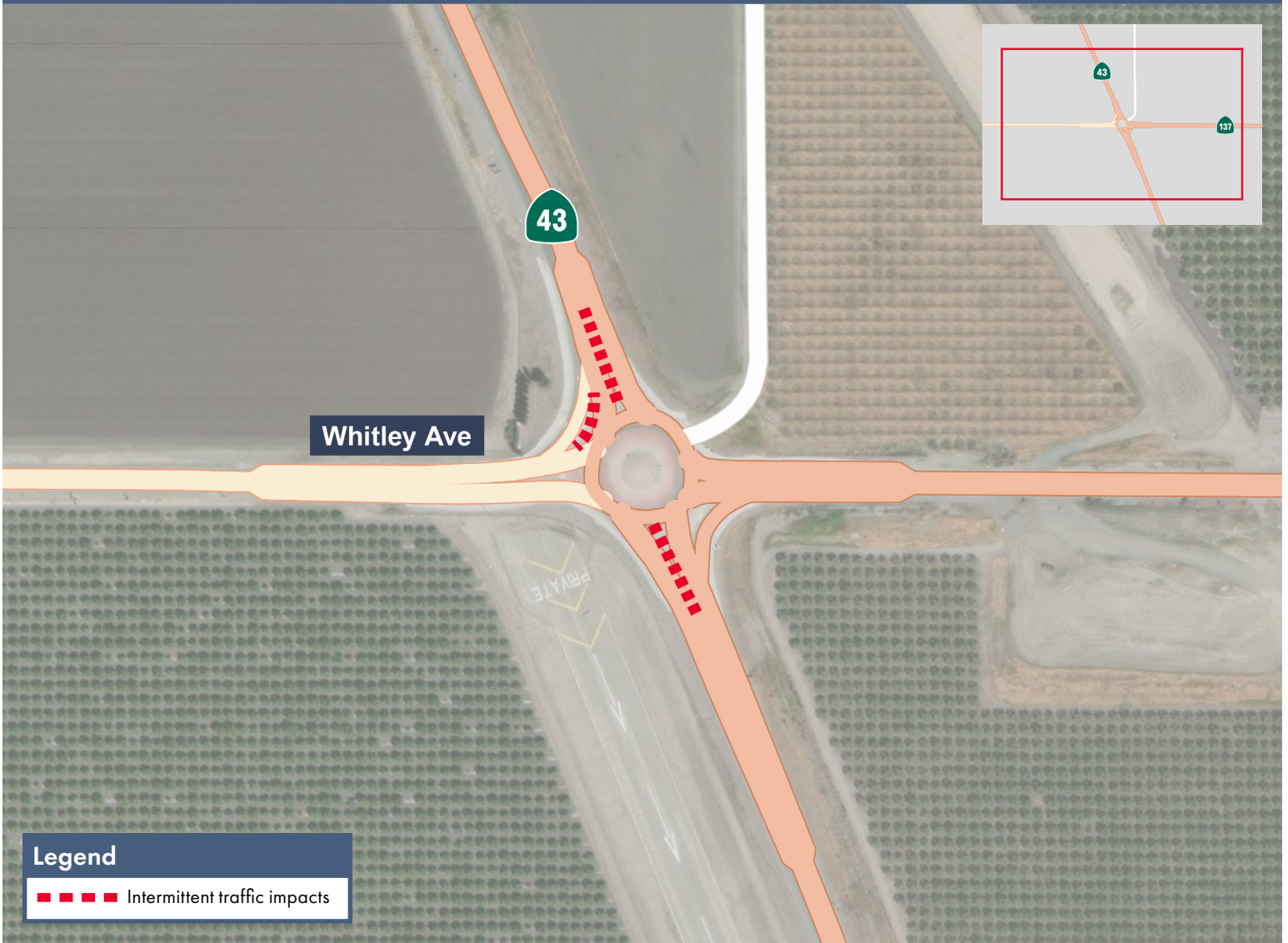
This work is part of Construction Package 2-3 (CP 2-3), the 65-mile stretch of high-speed rail between East American Avenue in Fresno County and one-mile north of the Tulare-Kern County line.

Closure And Detour Information:

Intermittent traffic impacts along the State Route (SR) 43, between Pickerell and Oregon avenues in Kings County for road work.

Work is scheduled from 7 p.m. to 7 a.m. starting Thursday, Oct. 31 through Thursday, Nov. 14, 2024.

Signage and flaggers will be in place to direct traffic. Drivers should expect delays.



Legend

■ ■ ■ ■ Intermittent traffic impacts

Contact Us:

Augie Blancas
California High-Speed Rail
(559) 720-6695
Augie.Blancas@hsr.ca.gov

Ramiro Diaz
California High-Speed Rail
(559) 577-2246
Ramiro.Diaz@hsr.ca.gov
Para más información en Español.

Rachael Ray
Dragados-Flatiron Joint Venture
(559) 356-7234
pim@dfcp23.com

Scan QR Code For More Information,
Connect To Our Websites And Follow
Us On Social Media. This Information
Is Subject To Change.

