



CONSTRUCTION ALERT

Nighttime Lane Closure Along West Avenue In Fresno

Fresno, Calif. – The California High-Speed Rail Authority (Authority), in cooperation with design-build contractor Tutor-Perini / Zachry / Parsons (TPZP), announces nighttime lane closures along northbound West Avenue between McKinley and Weber avenues in Fresno for utility work. Work is scheduled from 9 p.m. to 6 a.m. starting Sunday, Oct. 20 through Friday, Nov. 25, 2024.

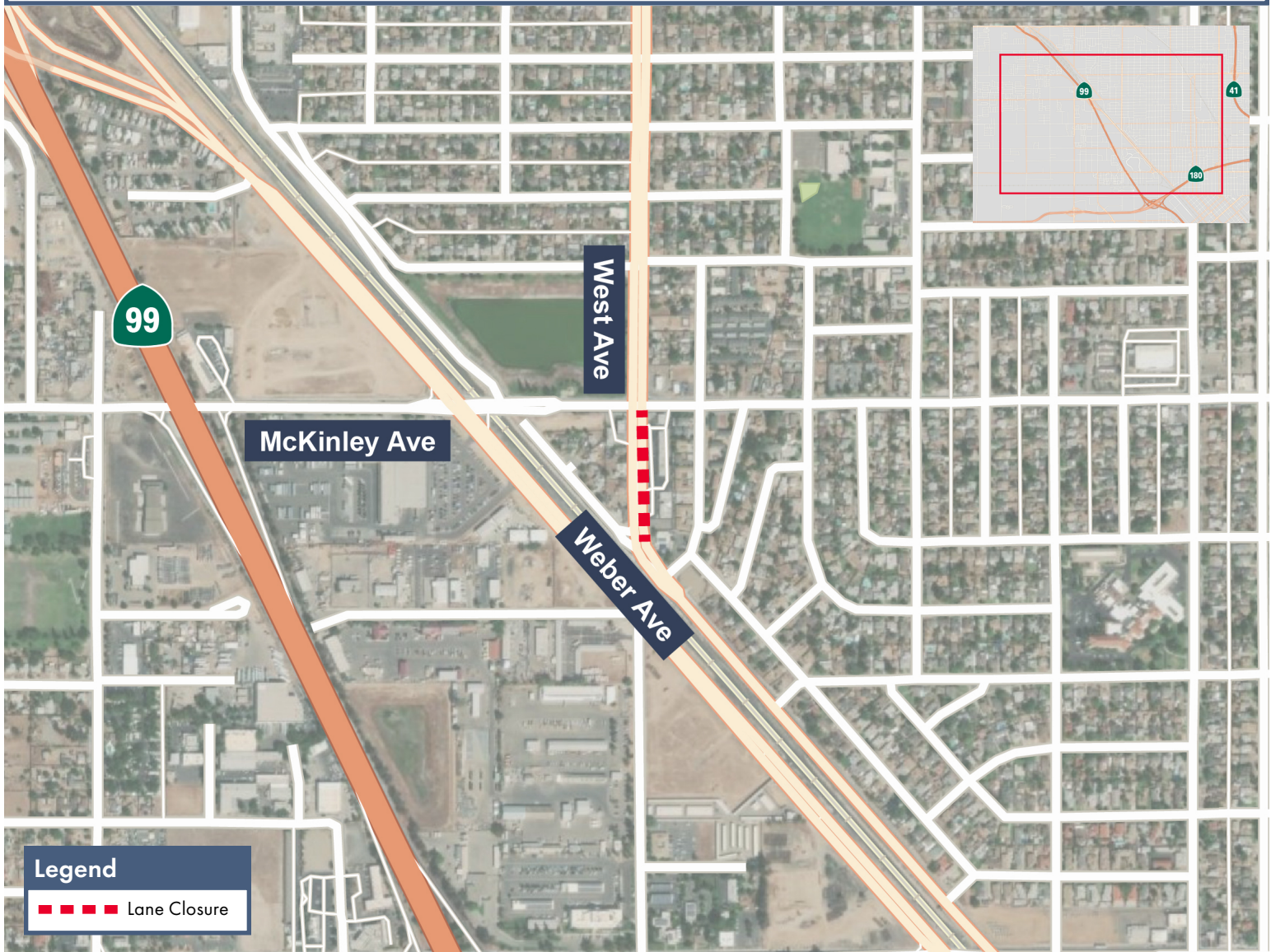
This work is part of Construction Package 1 (CP 1), the first 32-mile stretch of high-speed rail between Avenue 19 in Madera County and East American Avenue in Fresno County.

Closure Information:

Nighttime lane closures along northbound West Avenue between McKinley and Weber avenues in Fresno for utility work.

Work is scheduled from 9 p.m. to 6 a.m. starting Sunday, Oct. 20 through Friday, Nov. 25, 2024.

Signage will be in place to direct traffic. Access to all businesses and residents will be maintained.



Legend

— Lane Closure

Contact Us:

Augie Blancas
California High-Speed Rail
(559) 720-6695
Augie.Blancas@hsr.ca.gov

Gloria Campos
California High-Speed Rail
(559) 369-6414
Gloria.Campos@hsr.ca.gov
Para más información en Español.

Yadira Lopez
Tutor-Perini / Zachry / Parsons
(559) 385-7025
ContactCP1@tpzpjv.com

Scan QR Code For More Information,
Connect To Our Websites And Follow
Us On Social Media. This Information
Is Subject To Change.

