



CONSTRUCTION ALERT

Road Closure And Realignment Of Avenue 120 In Tulare County

Tulare County, Calif. – The California High-Speed Rail Authority (Authority), in cooperation with design-build contractor Dragados-Flatiron Joint Venture (DFJV), announces a road closure and realignment of Avenue 120, near State Route (SR) 43 in Tulare County. The road closure and realignment for traffic will go into effect on Friday, Jan. 31, 2025.

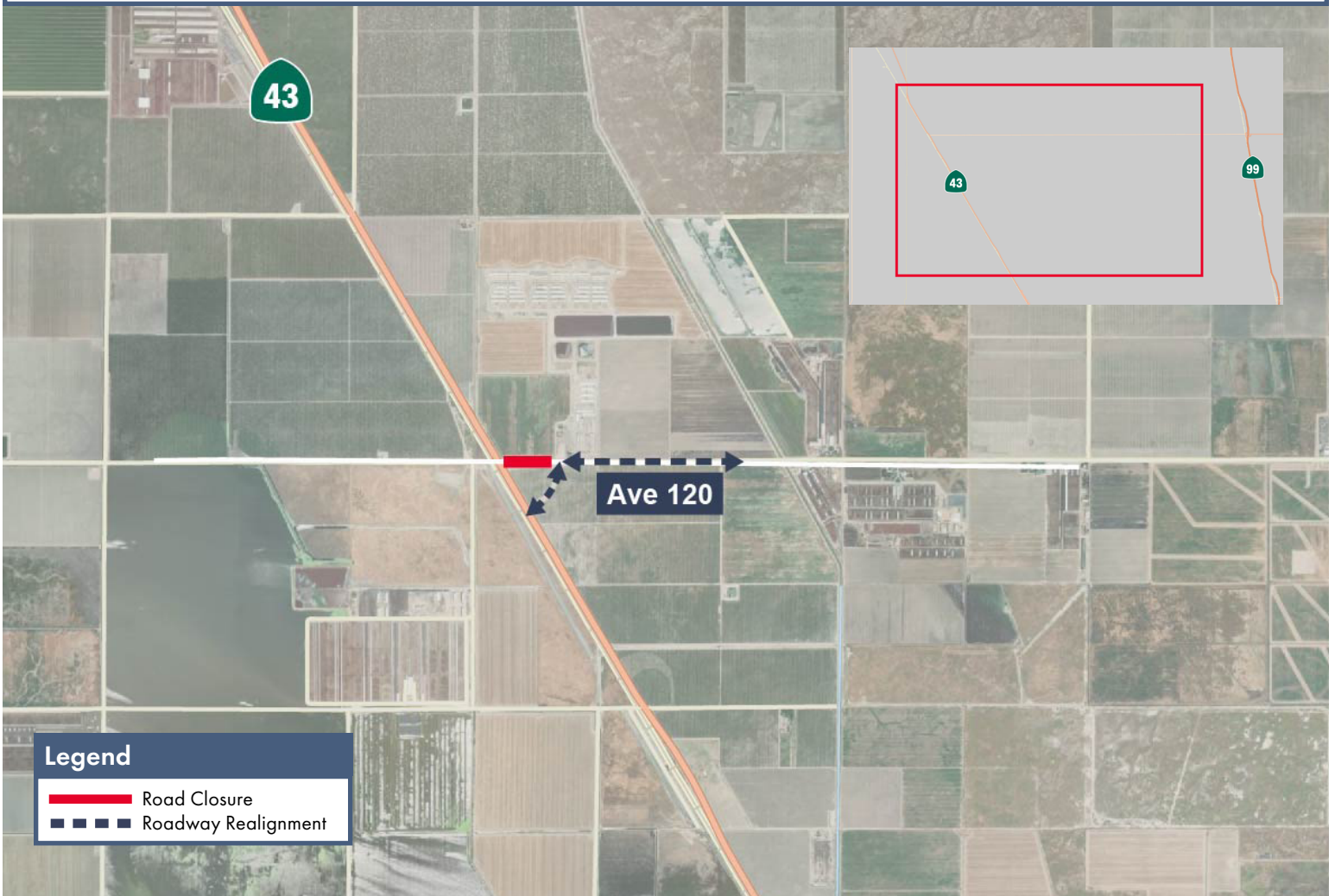
This work is part of Construction Package 2-3 (CP 2-3), the 65-mile stretch of high-speed rail between East American Avenue in Fresno County and one-mile north of the Tulare-Kern County line.

Closure And Detour Information:

Road closure and realignment of Avenue 120, near SR 43 in Tulare County.

Signage will be in place to direct traffic. Access will be maintained for all property and business owners.

The road closure and realignment for traffic will go into effect on Friday, Jan. 31, 2025.



Contact Us:

Augie Blancas
California High-Speed Rail
(559) 720-6695
Augie.Blancas@hsr.ca.gov

Ramiro Diaz
California High-Speed Rail
(559) 577-2246
Ramiro.Diaz@hsr.ca.gov
Para más información en Español.

Rachael Ray
Dragados-Flatiron Joint Venture
(559) 356-7234
pim@dfcp23.com

Scan QR Code For More Information, Connect To Our Websites And Follow Us On Social Media. This Information Is Subject To Change.

