



CONSTRUCTION ALERT

Multiple Closures Along Railroad And Florence Avenues In Fresno

Fresno, Calif. – The California High-Speed Rail Authority (Authority), in cooperation with design-build contractor Tutor-Perini / Zachry / Parsons (TPZP), announces multiple closures along Railroad and Florence avenues in Fresno for utility work. Work is scheduled to begin Monday, Jan. 6, and will continue through Wednesday, March 12, 2025.

This work is part of Construction Package 1 (CP 1), the first 32-mile stretch of high-speed rail between Avenue 19 in Madera County and East American Avenue in Fresno County.

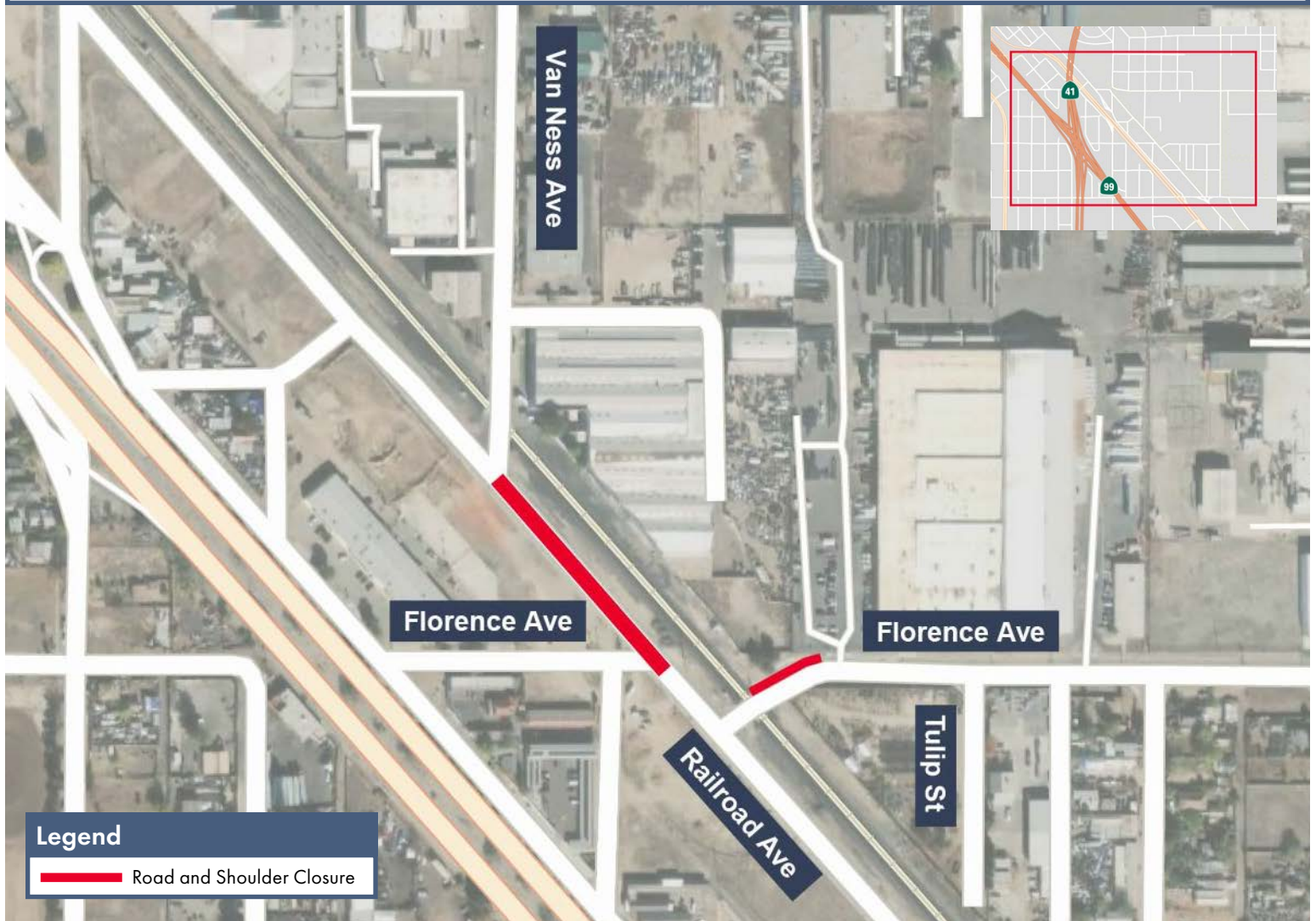
Closure And Detour Information:

Road closure along Railroad Avenue, between Van Ness and Florence avenues;


Shoulder closure along Florence Avenue, between Tulip Street and Railroad Avenue in Fresno for utility work.

Work is scheduled from 7 am to 4 pm starting Thursday, Dec. 26, 2024, through Thursday, March 6, 2025.

Signage will be in place to direct traffic. Access will be maintained for all businesses and property owners.



Legend

 Road and Shoulder Closure

Contact Us:

Augie Blancas
California High-Speed Rail
(559) 720-6695
Augie.Blancas@hsr.ca.gov

Ramiro Diaz
California High-Speed Rail
(559) 577-2246
Ramiro.Diaz@hsr.ca.gov
Para más información en Español.

Yadira Lopez
Tutor-Perini / Zachry / Parsons
(888) 860-1868
ContactCP1@tpzpjv.com

Scan QR Code For More Information,
Connect To Our Websites And Follow
Us On Social Media. This Information
Is Subject To Change.

