



CONSTRUCTION ALERT

Multiple Closures Along H And Fresno Streets In Fresno

Fresno, Calif. – The California High-Speed Rail Authority (Authority), in cooperation with design-build contractor Tutor-Perini / Zachry / Parsons (TPZP), announces multiple closures along H and Fresno streets in Fresno for utility work. Work is scheduled from 9 p.m. to 6 a.m. starting Sunday, January 19, and will continue through Friday, Feb. 21, 2025.

This work is part of Construction Package 1 (CP 1), the first 32-mile stretch of high-speed rail between Avenue 19 in Madera County and East American Avenue in Fresno County.

Closure And Detour Information:

Multiple Closures:

- Lane closure along H Street between Tulare and Tuolumne streets;
- Road closure along the Fresno Street interchange from Broadway to H streets;
- Lane closures along Fresno Street between Broadway and Fulton streets;
- Road closure along Fresno Street between G and Broadway streets.

Work is scheduled from 9 p.m. to 6 a.m. starting Sunday, January 19 and will continue through Friday, Feb. 21, 2025.

Eastbound Fresno Street Detour

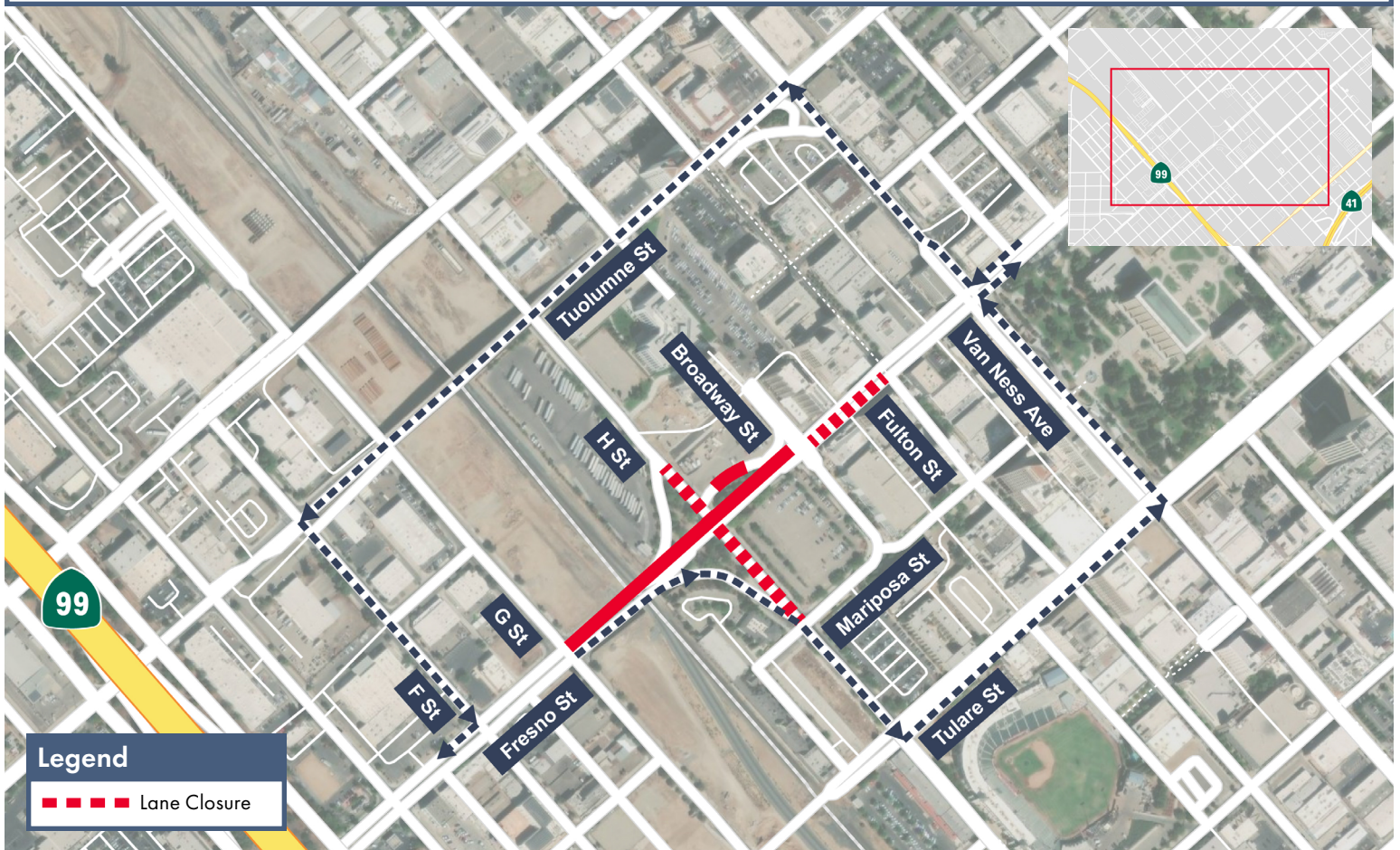
Eastbound traffic along Fresno Street will be detoured south on H Street, east on Tulare Street, and north on Van Ness Avenue to Fresno Street.

Westbound Fresno Street Detour

Westbound traffic along Fresno Street will be

detoured north on Van Ness Avenue, west on Tuolumne Street, and south on F Street to Fresno Street.

Signage and flaggers will be in place to direct traffic. Pedestrian access will be restricted in some areas. Access to all businesses and residents will be maintained.



Legend

— Lane Closure

Contact Us:

Augie Blancas
California High-Speed Rail
(559) 720-6695
Augie.Blancas@hsr.ca.gov

Ramiro Diaz
California High-Speed Rail
(559) 577-2246
Ramiro.Diaz@hsr.ca.gov
Para más información en Español.

Yadira Lopez
Tutor-Perini / Zachry / Parsons
(888) 860-1868
ContactCP1@tpzpjv.com

Scan QR Code For More Information,
Connect To Our Websites And Follow
Us On Social Media. This Information
Is Subject To Change.

