



CONSTRUCTION ALERT

Multiple Closures Along Sarah Street And Florence Avenue In Fresno

Fresno, Calif. – The California High-Speed Rail Authority (Authority), in cooperation with design-build contractor Tutor-Perini / Zachry / Parsons (TPZP), announces multiple closures along Sarah Street and Florence Avenue in Fresno for utility work. Work will continue through Friday, Sept. 5, 2025.

This work is part of Construction Package 1 (CP 1), the first 32-mile stretch of high-speed rail between Avenue 19 in Madera County and East American Avenue in Fresno County.

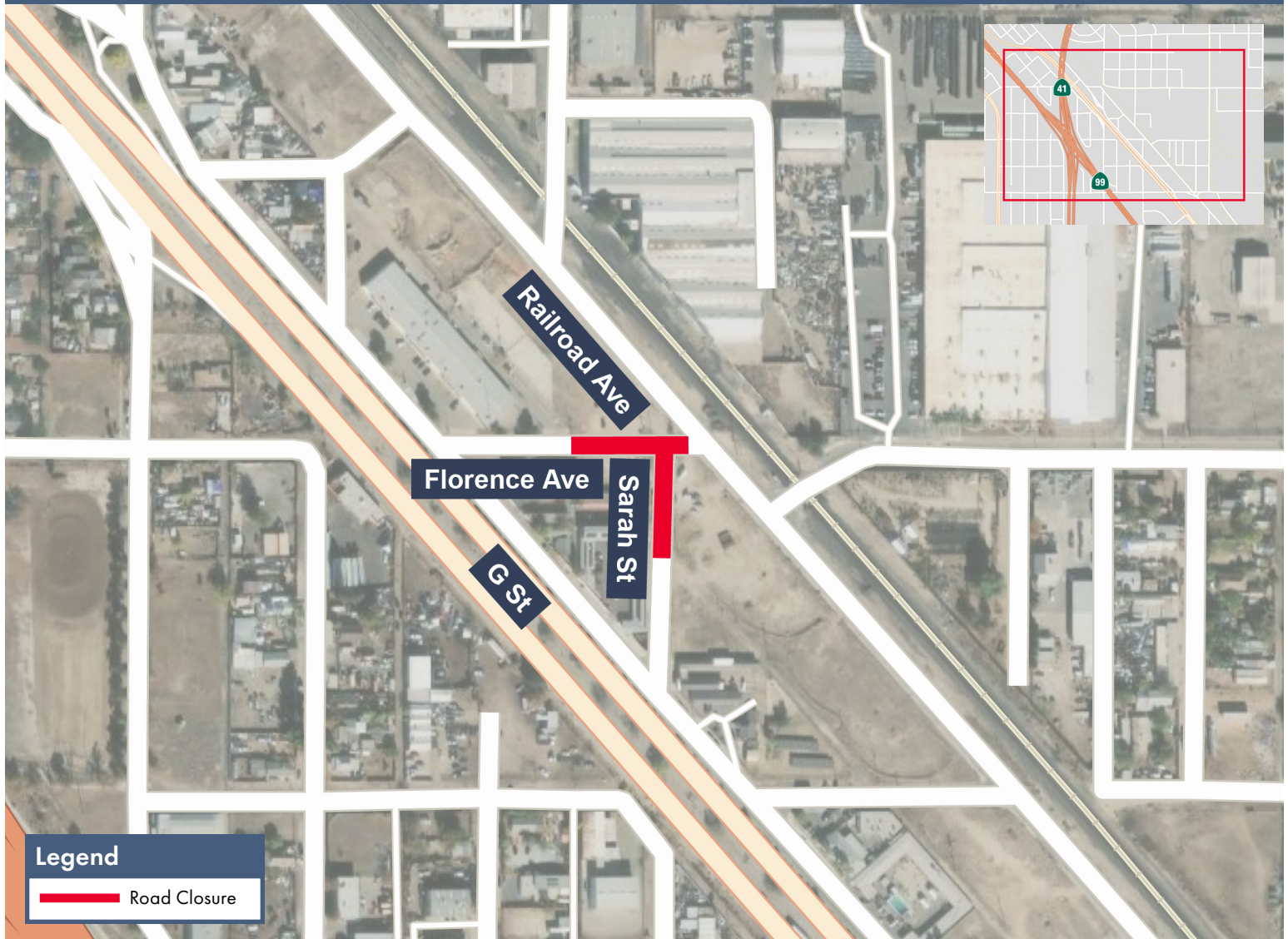
Closure And Detour Information:

Multiple Closures:

- Road closure along Florence Avenue, between G Street and Railroad Avenue;
- Road closure along Sarah Street, between G Street and Railroad Avenue.

Work will continue through Friday, Sept. 5, 2025.

Signage will be in place to direct traffic. Access will be maintained for all businesses and property owners.



Legend

 Road Closure

Contact Us:

Augie Blancas
California High-Speed Rail
(559) 720-6695
Augie.Blancas@hsr.ca.gov

Ramiro Diaz
California High-Speed Rail
(559) 577-2246
Ramiro.Diaz@hsr.ca.gov
Para más información en Español.

Yadira Lopez
Tutor-Perini / Zachry / Parsons
(888) 860-1868
ContactCP1@tpzpjv.com

Scan QR Code For More Information,
Connect To Our Websites And Follow
Us On Social Media. This Information
Is Subject To Change.

