



CONSTRUCTION ALERT

Multiple Closures Along Blythe Avenue And Golden State Boulevard In Fresno

Fresno, Calif. – The California High-Speed Rail Authority (Authority), in cooperation with design-build contractor Tutor-Perini / Zachry / Parsons (TPZP), announces multiple closures along Blythe Avenue and Golden State Boulevard in Fresno for utility work. Work is scheduled from 9 a.m. to 4 p.m. and will continue through Friday, July 18, 2025.

This work is part of Construction Package 1 (CP 1), the first 32-mile stretch of high-speed rail between Avenue 19 in Madera County and East American Avenue in Fresno County.

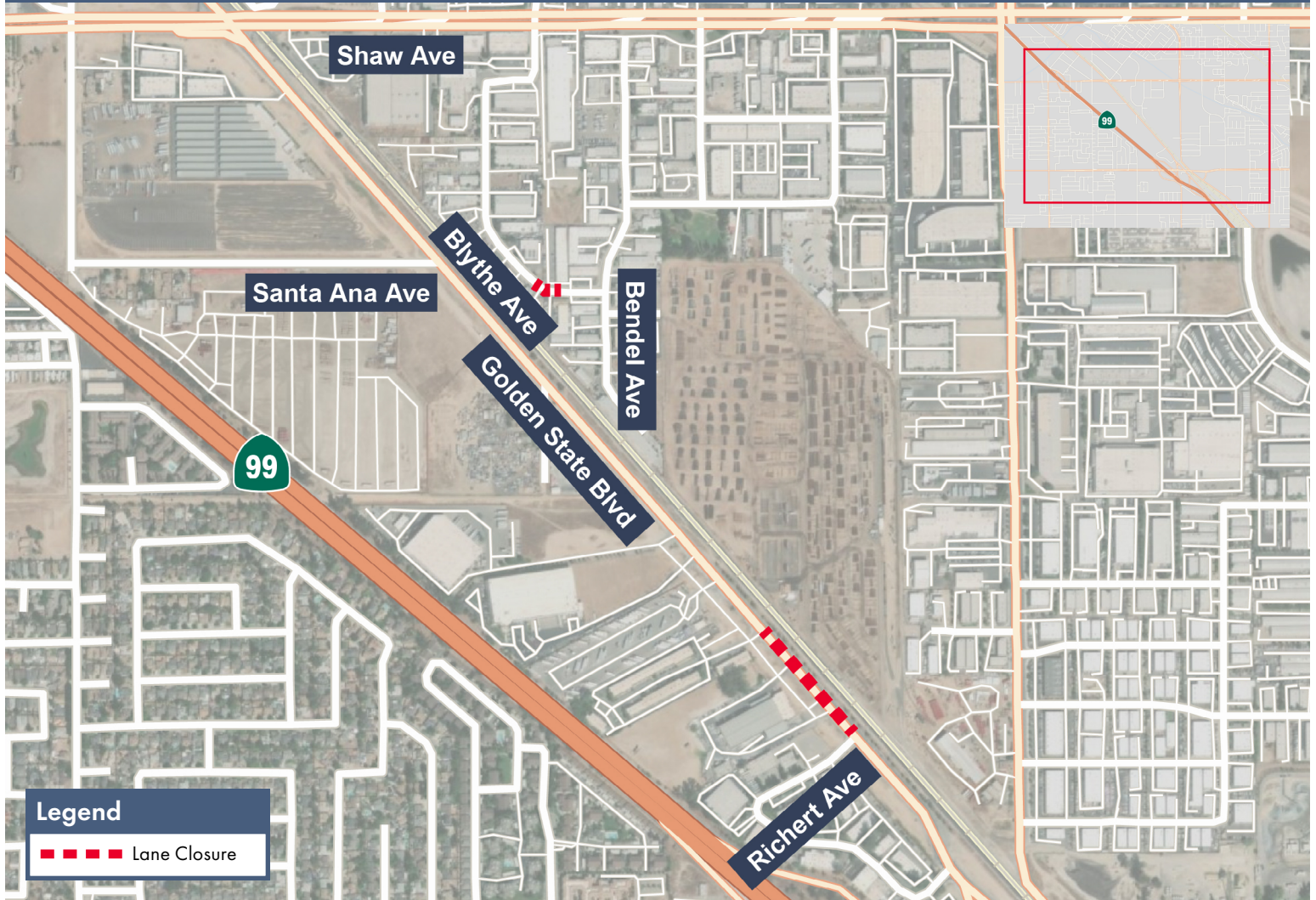
Closure And Detour Information:

Multiple Closures:

- Lane and sidewalk closures along Blythe Avenue, between Shaw and Bendel avenues;
- Intermittent lane and shoulder closures along Golden State Boulevard, between Santa Ana and Richert avenues.

Work is scheduled from 9 a.m. to 4 p.m. and will continue through Friday, July 18, 2025.

Signage and flaggers will be in place to direct traffic. Pedestrian crosswalks will be restricted in some areas. Access to all businesses and residents will be maintained.



Legend

— Lane Closure

Contact Us:

Augie Blancas
California High-Speed Rail
(559) 720-6695
Augie.Blancas@hsr.ca.gov

Ramiro Diaz
California High-Speed Rail
(559) 577-2246
Ramiro.Diaz@hsr.ca.gov
Para más información en Español.

Yadira Lopez
Tutor-Perini / Zachry / Parsons
(888) 860-1868
ContactCP1@tpzpjv.com

Scan QR Code For More Information, Connect To Our Websites And Follow Us On Social Media. This Information Is Subject To Change.

