



CONSTRUCTION ALERT

Girder Haul Along Clarkson Avenue, State Route 43, And Hanford Armona Road In Fresno And Kings County

Fresno and Kings County, Calif. – The California High-Speed Rail Authority (Authority), in cooperation with design-build contractor Dragados-Flatiron Joint Venture (DFJV), announces intermittent traffic impacts along Clarkson Avenue, State Route (SR) 43, and Hanford Armona Road in Fresno and Kings counties to transport pre-cast concrete girders to a high-speed rail construction site. Hauling is scheduled from 4 a.m. to 4 p.m. on Monday, July 14 and Thursday, July 17, 2025.

This work is part of Construction Package 2-3 (CP 2-3), the 65-mile stretch of high-speed rail between East American Avenue in Fresno County and one-mile north of the Tulare-Kern County line.

Closure And Detour Information:

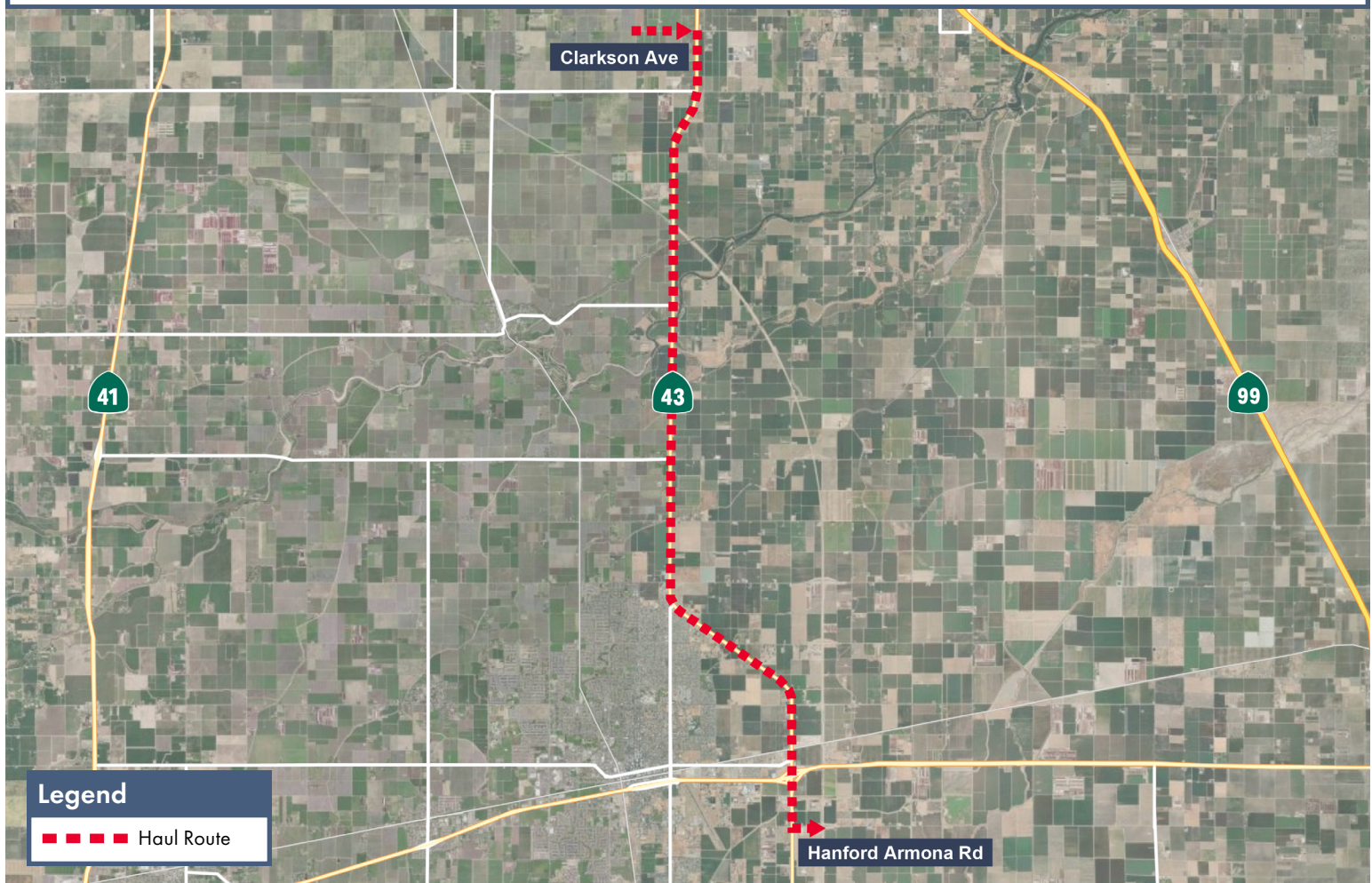
Intermittent traffic impacts along Clarkson Avenue, SR 43, and Hanford Armona Road to transport pre-cast concrete girders to a high-speed rail construction site.

Hauling is scheduled from 4 a.m. to 4 p.m. on Monday, July 14 and Thursday, July 17, 2025.

Haul Route

Girders will be transported east on Clarkson Avenue, south on SR 43, then east on Hanford Armona Road to a high-speed rail construction site.

Drivers may experience delays.



Contact Us:

Augie Blancas
California High-Speed Rail
(559) 720-6695
Augie.Blancas@hsr.ca.gov

Ramiro Diaz
California High-Speed Rail
(559) 577-2246
Ramiro.Diaz@hsr.ca.gov
Para más información en Español.

Rachael Ray
Dragados-Flatiron Joint Venture
(559) 356-7234
pim@dfcp23.com

Scan QR Code For More Information,
Connect To Our Websites And Follow
Us On Social Media. This Information
Is Subject To Change.

