



CONSTRUCTION ALERT

Haul Along State Route 41 To Manning Avenue

Fresno County, Calif. – The California High-Speed Rail Authority (Authority), in cooperation with design-build contractor Dragados-Flatiron Joint Venture (DFJV), announces intermittent traffic impacts along and near Conejo Avenue, State Route 41 and Floral Avenue in Fresno County to transport pre-cast concrete girders to a high-speed rail construction site. Hauling is scheduled from 6 a.m. to 6 p.m. on Thursday, Aug. 21; Friday, Aug. 22; and Wednesday, Aug. 27, 2025.

This work is part of Construction Package 2-3 (CP 2-3), the 65-mile stretch of high-speed rail between East American Avenue in Fresno County and one-mile north of the Tulare-Kern County line.

Closure And Detour Information:

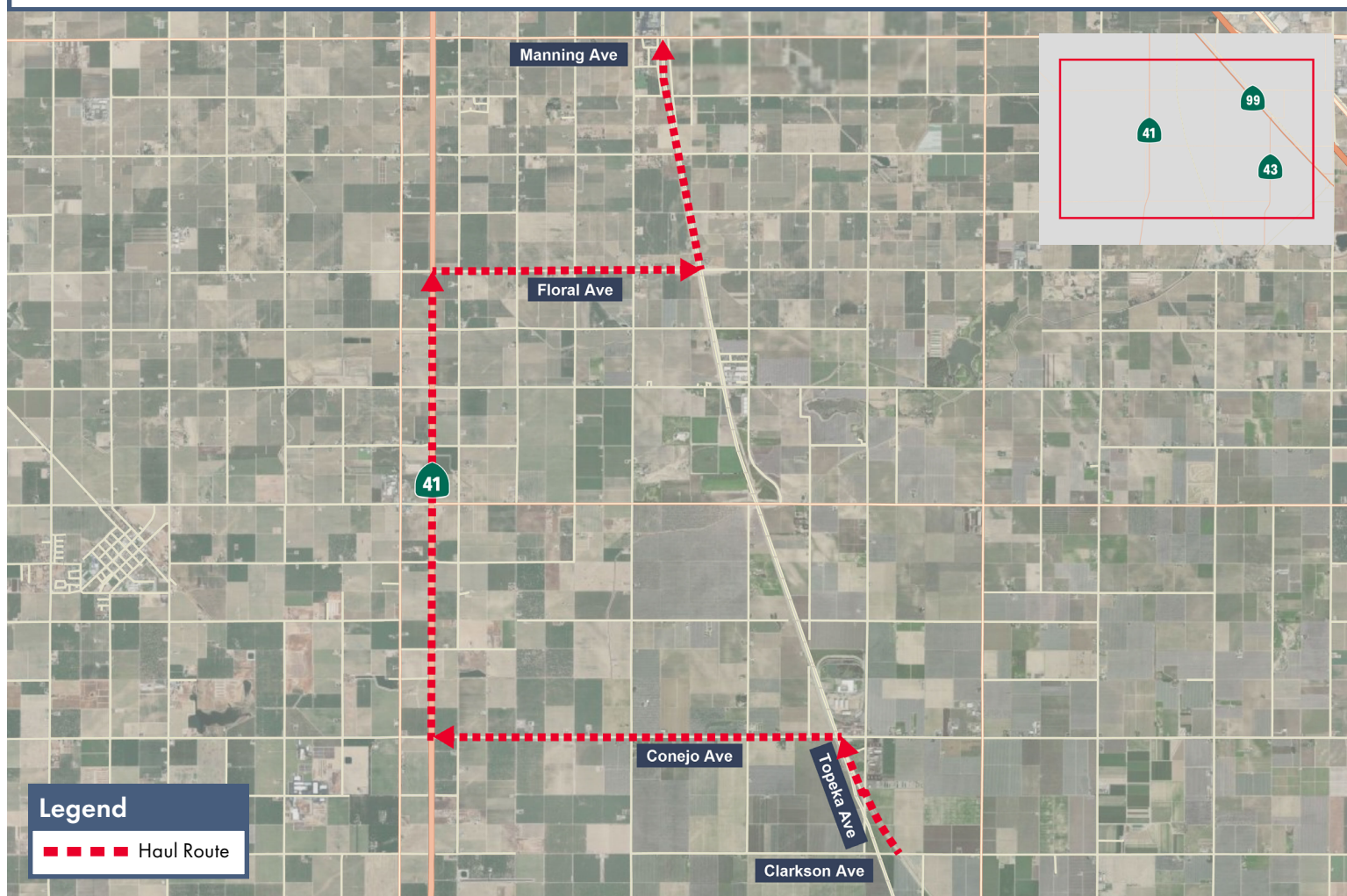
Intermittent traffic impacts along Clarkson Avenue, Topeka Avenue, Conejo Avenue, State Route (SR) 41, and Floral Avenue to transport pre-cast concrete girders to a high-speed rail construction site.

Hauling is scheduled from 6 a.m. to 6 p.m. for Thursday, Aug. 21; Friday, Aug. 22; and Wednesday, Aug. 27, 2025.

Haul Route

Girders will be transported from a high-speed rail yard at Clarkson Avenue, north on the high-speed rail corridor, north on Topeka Avenue, west on Conejo Avenue, north on State Route (SR) 41, and east on Floral Avenue to a high-speed rail construction site.

Drivers may experience delays.



Contact Us:

Augie Blancas
California High-Speed Rail
(559) 720-6695
Augie.Blancas@hsr.ca.gov

Ramiro Diaz
California High-Speed Rail
(559) 577-2246
Ramiro.Diaz@hsr.ca.gov
Para más información en Español.

Rachael Ray
Dragados-Flatiron Joint Venture
(559) 356-7234
pim@dfcp23.com

Scan QR Code For More Information,
Connect To Our Websites And Follow
Us On Social Media. This Information
Is Subject To Change.

