



CONSTRUCTION ALERT

Road Closure Along Florence Avenue In Fresno

Fresno, Calif. – The California High-Speed Rail Authority (Authority), in cooperation with design-build contractor Tutor-Perini / Zachry / Parsons (TPZP), announces a road closure along Florence Avenue, between Tulip Street and Railroad Avenue in Fresno for utility work. Work will continue through Friday, Sept. 19, 2025.

This work is part of Construction Package 1 (CP 1), the first 32-mile stretch of high-speed rail between Avenue 19 in Madera County and East American Avenue in Fresno County.

Closure And Detour Information:

Road closure along Florence Avenue, between Tulip Street and Railroad Avenue in Fresno for utility work.

Work will continue through Friday, Sept. 19, 2025.

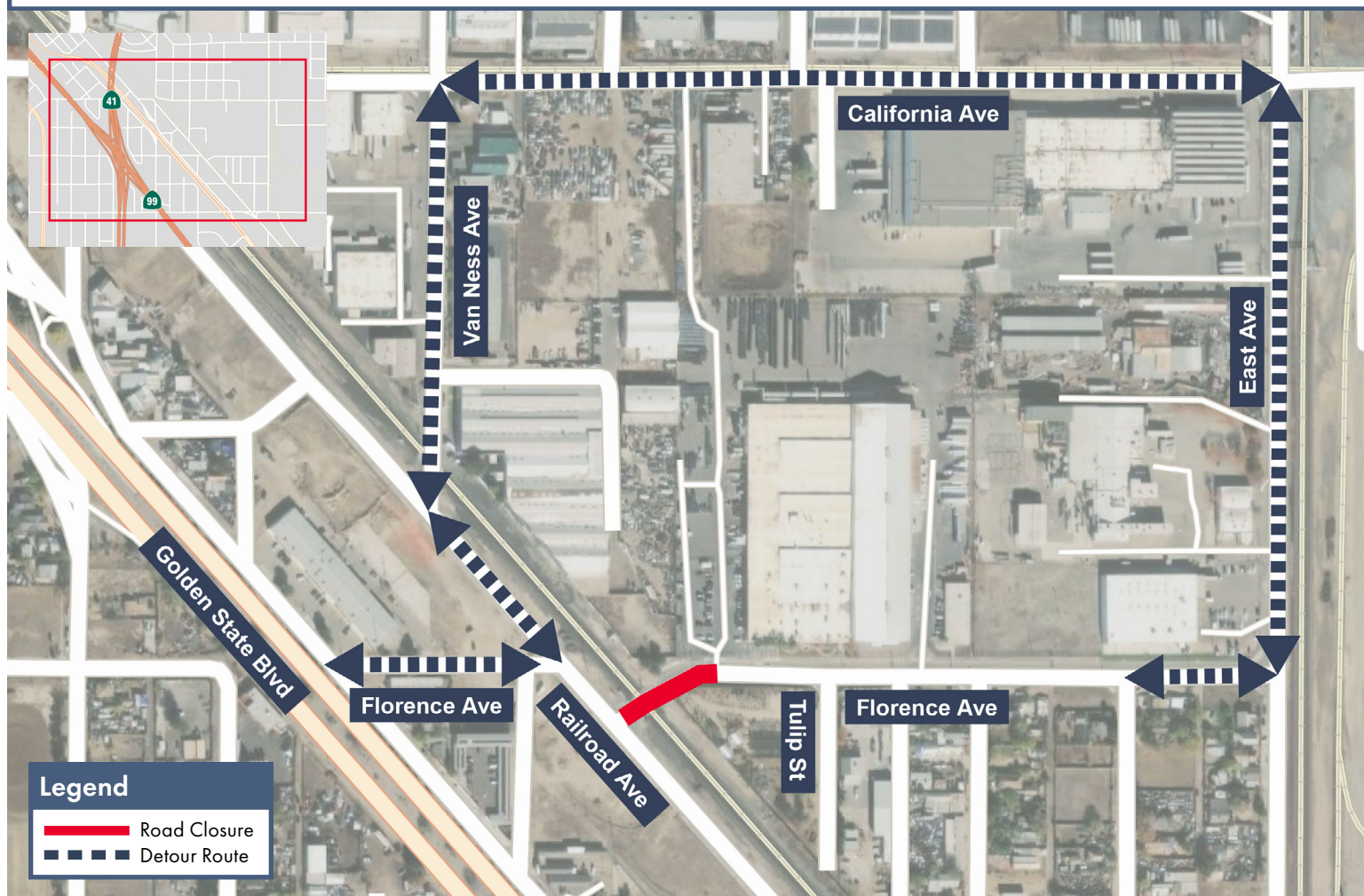
Eastbound Florence Avenue Detour

Traffic along Golden State Boulevard to eastbound Florence Avenue will be detoured north on Railroad Avenue, north on Van Ness Avenue, west on California Avenue, then south on East Avenue to Florence Avenue.

Westbound Florence Avenue Detour

Traffic along Florence Avenue will be detoured north on East Avenue, east on California Avenue, south on Van Ness Avenue, then south on Railroad Avenue to Florence Avenue.

Signage will be in place to direct traffic. Access will be maintained for all businesses and property owners.



Contact Us:

Augie Blancas
California High-Speed Rail
(559) 720-6695
Augie.Blancas@hsr.ca.gov

Ramiro Diaz
California High-Speed Rail
(559) 577-2246
Ramiro.Diaz@hsr.ca.gov
Para más información en Español.

Yadira Lopez
Tutor-Perini / Zachry / Parsons
(888) 860-1868
ContactCP1@tpzpjv.com

Scan QR Code For More Information,
Connect To Our Websites And Follow
Us On Social Media. This Information
Is Subject To Change.

