



CONSTRUCTION ALERT

Intermittent Traffic Impacts Along And Near Grangeville Boulevard, 10th Avenue, Houston Avenue, And State Route 43 In Kings And Tulare Counties

Kings And Tulare Counties, Calif. – The California High-Speed Rail Authority (Authority), in cooperation with design-build contractor Dragados-Flatiron Joint Venture (DFJV), announces intermittent traffic impacts along Grangeville Boulevard, 10th Avenue, Houston Avenue, State Route (SR) 43, Pickerell Avenue, Fourth Avenue and Avenue 56 in Kings and Tulare counties to transport pre-cast concrete girders to a high-speed rail construction site. Hauling will be intermittent between 6 a.m. and 6 p.m. starting Monday, Sept. 22 through Wednesday, Sept. 24, 2025.

This work is part of Construction Package 2-3 (CP 2-3), the 65-mile stretch of high-speed rail between East American Avenue in Fresno County and one-mile north of the Tulare-Kern County line.

Closure And Detour Information:

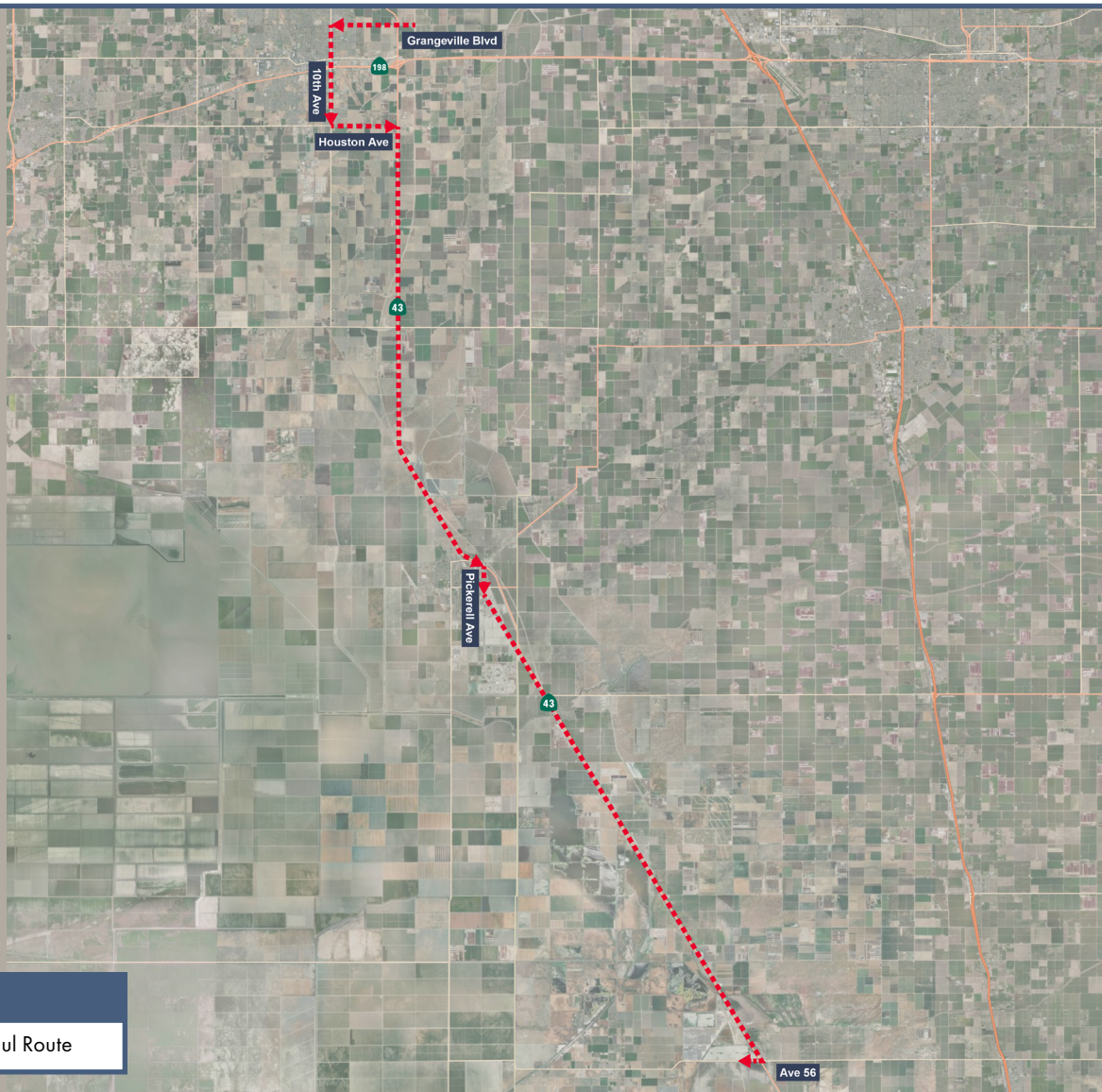
Intermittent traffic impacts along Grangeville Boulevard, 10th Avenue, Houston Avenue, State Route (SR) 43, Pickerell Avenue, Fourth Avenue and Avenue 56 in Kings and Tulare counties to transport pre-cast concrete girders to a high-speed rail construction site.

Hauling is scheduled intermittently between 6 a.m. and 6 p.m. starting Monday, Sept. 22 through Wednesday, Sept. 24, 2025.

Haul Route

Girders will be transported west on Grangeville Boulevard, south on 10th Avenue, east on Houston Avenue, south on SR 43, south on Pickerell Avenue, east on Fourth Avenue, south on SR 43 and west on Avenue 56 to a high-speed rail construction site.

Drivers may experience delays.



Legend

■ ■ ■ ■ ■ Haul Route

Contact Us:

Augie Blancas
California High-Speed Rail
(559) 720-6695
Augie.Blancas@hsr.ca.gov

Ramiro Diaz
California High-Speed Rail
(559) 577-2246
Ramiro.Diaz@hsr.ca.gov
Para más información en Español.

Rachael Ray
Dragados-Flatiron Joint Venture
(559) 356-7234
pim@dfcp23.com

Scan QR Code For More Information,
Connect To Our Websites And Follow
Us On Social Media. This Information
Is Subject To Change.

