



# CONSTRUCTION ALERT

## Road Closure Along Jersey Avenue In Kings County

**Kings County, Calif.** – The California High-Speed Rail Authority (Authority), in cooperation with design-build contractor Dragados-Flatiron Joint Venture (DFJV), announces a road closure along Jersey Avenue, between State Route (SR) 43 and Ninth Avenue in Kings County for construction of a high-speed rail grade separation. Work will continue through March 2026.

*This work is part of Construction Package 2-3 (CP 2-3), the 65-mile stretch of high-speed rail between East American Avenue in Fresno County and one-mile north of the Tulare-Kern County line.*

### Closure And Detour Information:

Road closure along Jersey Avenue, between SR 43 and Ninth Avenue in Kings County for construction of a high-speed rail grade separation.

**Work will continue through March 2026.**

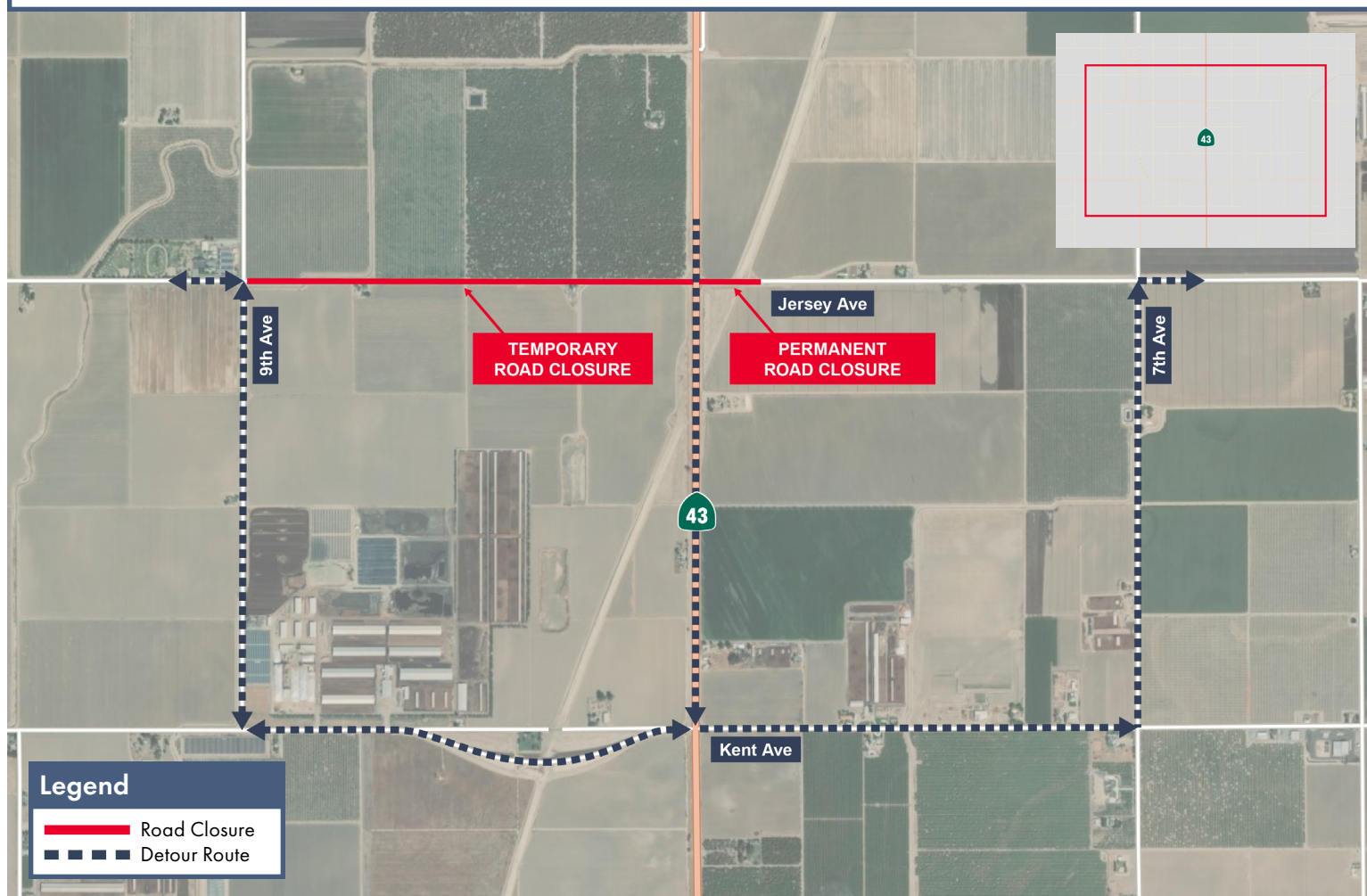
#### Eastbound Traffic From Ninth Avenue Detour

Traffic going eastbound on Jersey Avenue from Ninth Avenue will be detoured south on Ninth Avenue, east on Kent Avenue, north on Seventh Avenue, then east on Jersey Avenue.

#### Westbound Traffic From State Route 43 Detour

Traffic going westbound on Jersey Avenue from SR 43 will be detoured south on SR 43, west on Kent Avenue, north on Ninth Avenue, then west on Jersey Avenue.

**Signage will be in place to direct traffic. Access will be maintained for all property and business owners.**



### Contact Us:

Augie Blancas  
California High-Speed Rail  
(559) 720-6695  
Augie.Blancas@hsr.ca.gov

Ramiro Diaz  
California High-Speed Rail  
(559) 577-2246  
Ramiro.Diaz@hsr.ca.gov  
Para más información en Español.

Rachael Ray  
Dragados-Flatiron Joint Venture  
(559) 356-7234  
pim@dfcp23.com

Scan QR Code For More Information,  
Connect To Our Websites And Follow  
Us On Social Media. This Information  
Is Subject To Change.

