



# CONSTRUCTION ALERT

## Hauling Along State Route 43 And Excelsior Avenue In Fresno And Kings Counties

**Fresno and Kings Counties, Calif.** – The California High-Speed Rail Authority (Authority), in cooperation with design-build contractor Dragados-Flatiron Joint Venture (DFJV), announces intermittent traffic impacts along State Route (SR) 43 and Excelsior Avenue in Fresno and Kings counties to transport material to a high-speed rail construction site. Hauling is scheduled intermittently between 6 a.m. and 6 p.m. starting Monday, Oct. 20 through Friday, Nov. 21, 2025.

*This work is part of Construction Package 2-3 (CP 2-3), the 65-mile stretch of high-speed rail between East American Avenue in Fresno County and one-mile north of the Tulare-Kern County line.*

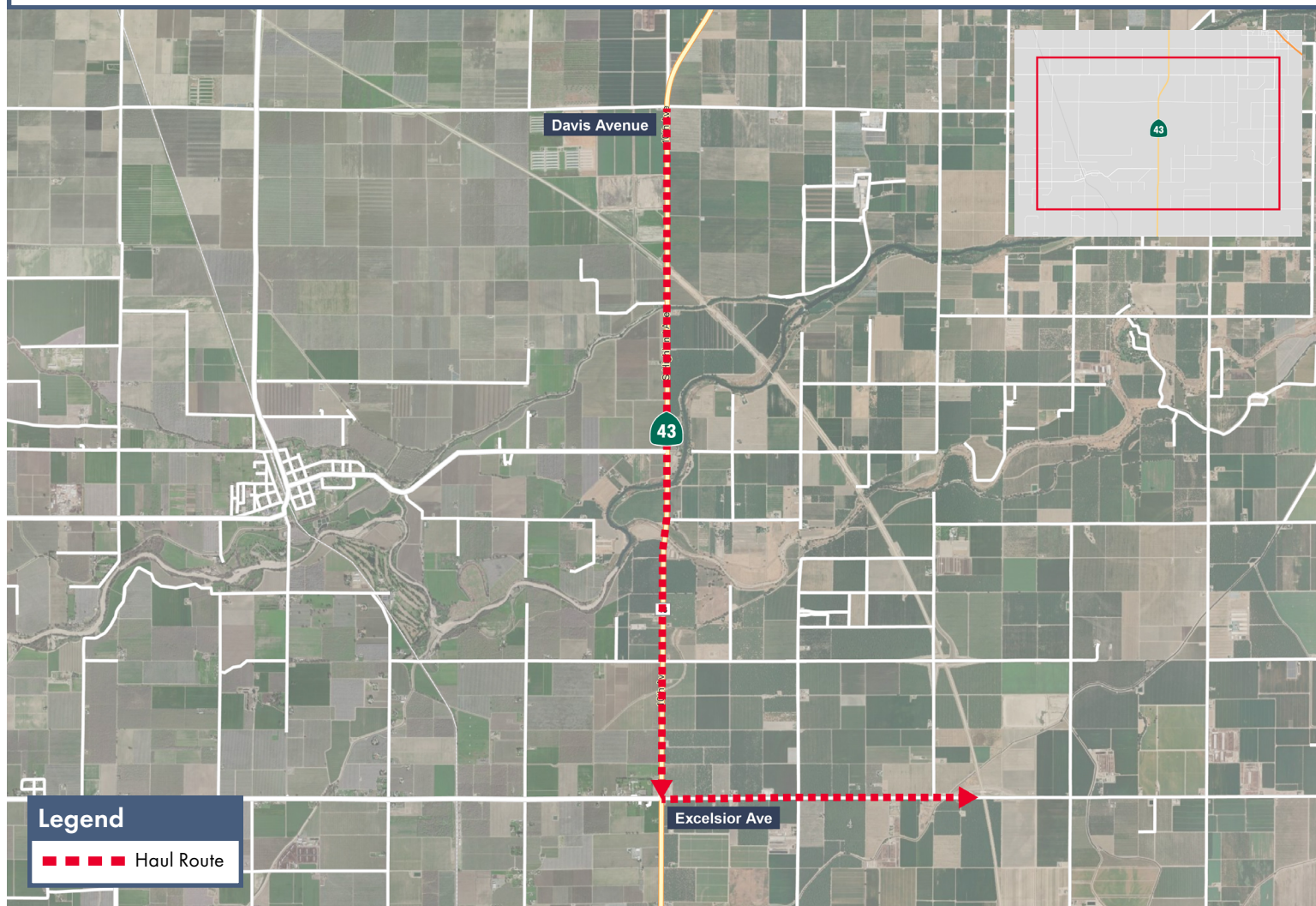
### Closure And Detour Information:

Hauling along State Route (SR) 43 and Excelsior Avenue in Fresno and Kings counties to transport material to a high-speed rail construction site.

**Hauling is scheduled intermittently between 6 a.m. and 6 p.m. starting Monday, Oct. 20 through Friday, Nov. 21, 2025.**

#### HAUL ROUTE

Material will be transported south on State Route (SR) 43, then east on Excelsior Avenue to a high-speed rail construction site.



### Contact Us:

Augie Blancas  
California High-Speed Rail  
(559) 720-6695  
Augie.Blancas@hsr.ca.gov

Ramiro Diaz  
California High-Speed Rail  
(559) 577-2246  
Ramiro.Diaz@hsr.ca.gov  
Para más información en Español.

Rachael Ray  
Dragados-Flatiron Joint Venture  
(559) 356-7234  
pim@dfcp23.com

Scan QR Code For More Information,  
Connect To Our Websites And Follow  
Us On Social Media. This Information  
Is Subject To Change.

