



# CONSTRUCTION ALERT



## Intermittent Lane Closures Along State Route 198 In Kings County

**Kings County, Calif.** – The California High-Speed Rail Authority (Authority), in cooperation with design-build contractor Dragados-Flatiron Joint Venture (DFJV), announces intermittent lane closures along eastbound and westbound State Route (SR) 198, between Sixth Avenue and State Route (SR) 43 in Kings County for ongoing work at the Hanford Viaduct. Work is scheduled from 6 a.m. to 6 p.m. starting Monday, Dec. 1 through Wednesday, Dec. 3, 2025.

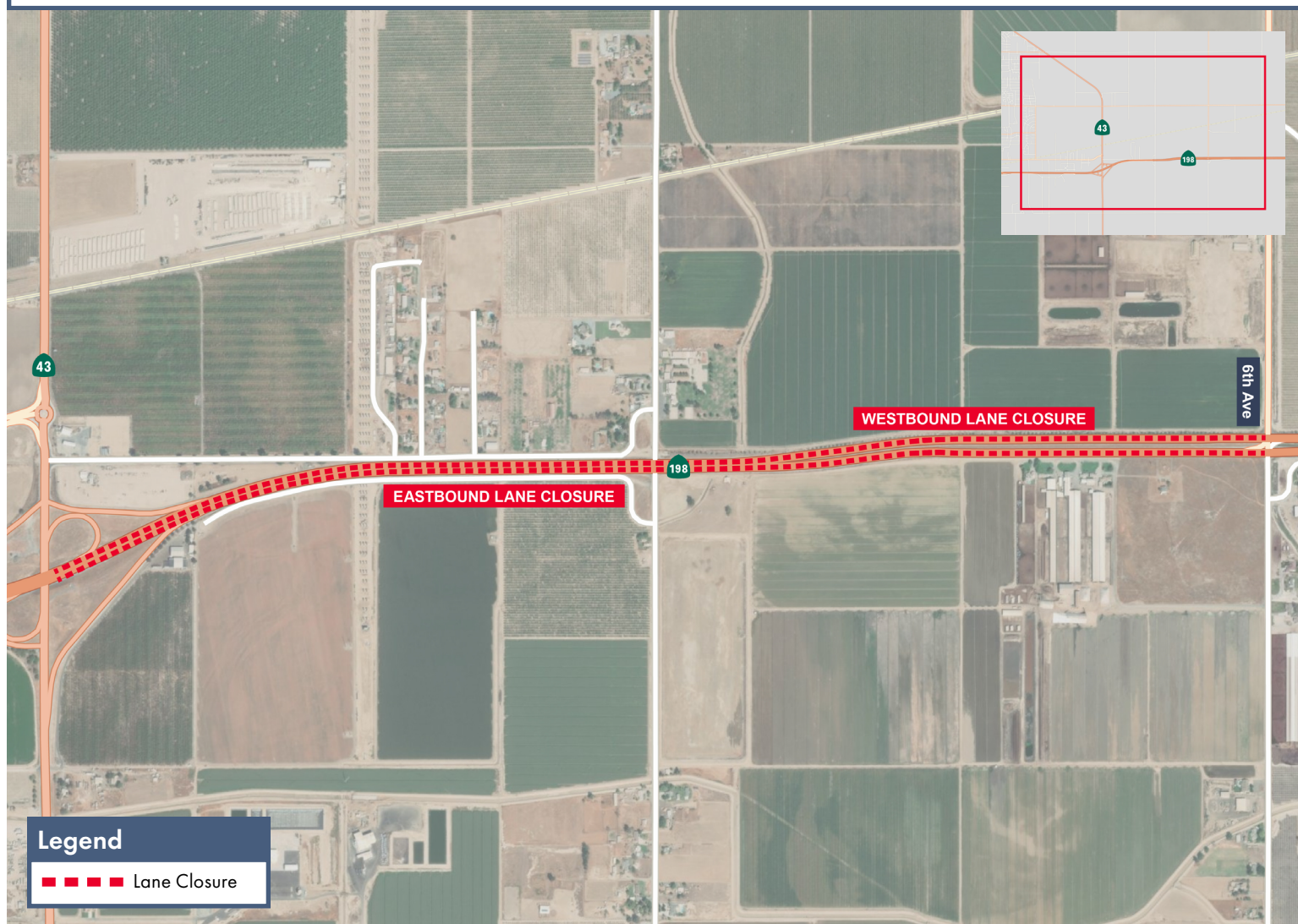
*This work is part of Construction Package 2-3 (CP 2-3), the 65-mile stretch of high-speed rail between East American Avenue in Fresno County and one-mile north of the Tulare-Kern County line.*

### Closure And Detour Information:

Intermittent lane closures along SR 198, between Sixth Avenue and SR 43 in Kings County for ongoing work at the Hanford Viaduct.

**Signage will be in place to direct traffic.**

**Work is scheduled from 6 a.m. to 6 p.m. starting Monday, Dec. 1 through Wednesday, Dec. 3, 2025.**



### Contact Us:

Augie Blancas  
California High-Speed Rail  
(559) 720-6695  
Augie.Blancas@hsr.ca.gov

Ramiro Diaz  
California High-Speed Rail  
(559) 577-2246  
Ramiro.Diaz@hsr.ca.gov  
Para más información en Español.

Rachael Ray  
Dragados-Flatiron Joint Venture  
(559) 356-7234  
pim@dfcp23.com

Scan QR Code For More Information,  
Connect To Our Websites And Follow  
Us On Social Media. This Information  
Is Subject To Change.

