



# CONSTRUCTION ALERT

## Multiple Shoulder Closures Along Golden State Boulevard And State Route 99, Between Ashlan And Mckinley Avenues

**Fresno, Calif.** – The California High-Speed Rail Authority (Authority), in cooperation with design-build contractor Tutor-Perini / Zachry / Parsons (TPZP), announces multiple shoulder closures along and near Golden State Boulevard and State Route (SR) 99, between Ashlan and McKinley avenues in Fresno for fence installation. Work is scheduled from 9 a.m. to 4 p.m. and will continue through Wednesday, Nov. 19, 2025.

*This work is part of Construction Package 1 (CP 1), the first 32-mile stretch of high-speed rail between Avenue 19 in Madera County and East American Avenue in Fresno County.*

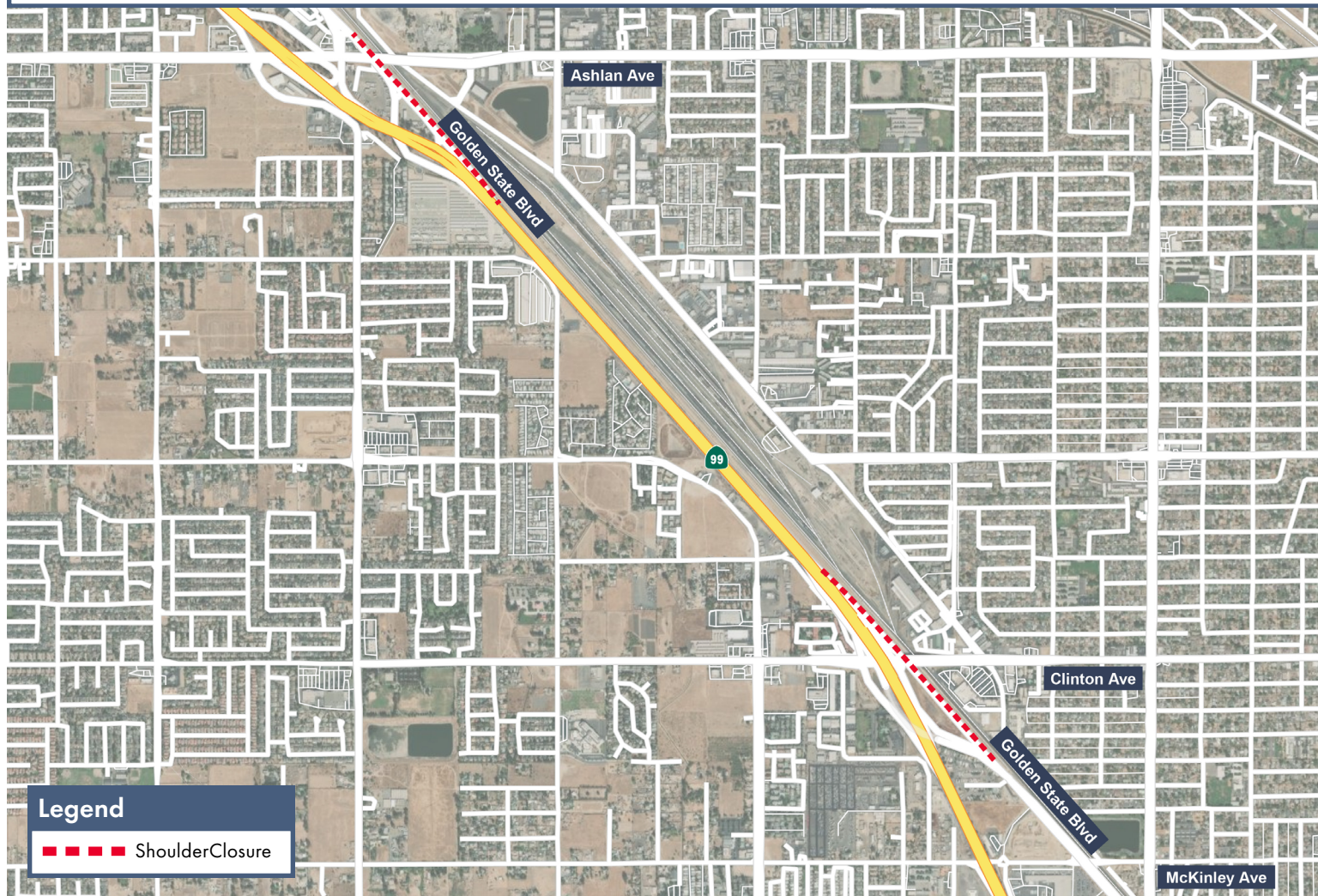
### Closure And Detour Information:

#### Multiple Closures:

- Intermittent shoulder closures along the northbound SR 99 on-ramp and Golden State Boulevard, north of McKinley Avenue;
- Intermittent shoulder closures along the northbound SR 99 off-ramp and northbound Golden State Boulevard, between Ashlan and Clinton Avenue.

**Work is scheduled from 9 a.m. to 4 p.m. and will continue through Wednesday, Nov. 19, 2025.**

**Access will be maintained to all property and business owners. Signage will be in place to direct traffic.**



### Contact Us:

Augie Blancas  
California High-Speed Rail  
(559) 720-6695  
Augie.Blancas@hsr.ca.gov

Ramiro Diaz  
California High-Speed Rail  
(559) 577-2246  
Ramiro.Diaz@hsr.ca.gov  
Para más información en Español.

Yadira Lopez  
Tutor-Perini / Zachry / Parsons  
(888) 860-1868  
ContactCP1@tpzpjv.com

Scan QR Code For More Information,  
Connect To Our Websites And Follow  
Us On Social Media. This Information  
Is Subject To Change.

