



CONSTRUCTION ALERT

Lane Closure Along Golden State Boulevard In Fresno

Fresno, Calif. – The California High-Speed Rail Authority (Authority), in cooperation with design-build contractor Tutor-Perini / Zachry / Parsons (TPZP), announces a lane closure along Golden State Boulevard between San Madele and Market avenues in Fresno for road work. Work is scheduled from 9 a.m. to 4 p.m. and will continue through Thursday, Nov. 20, 2025.

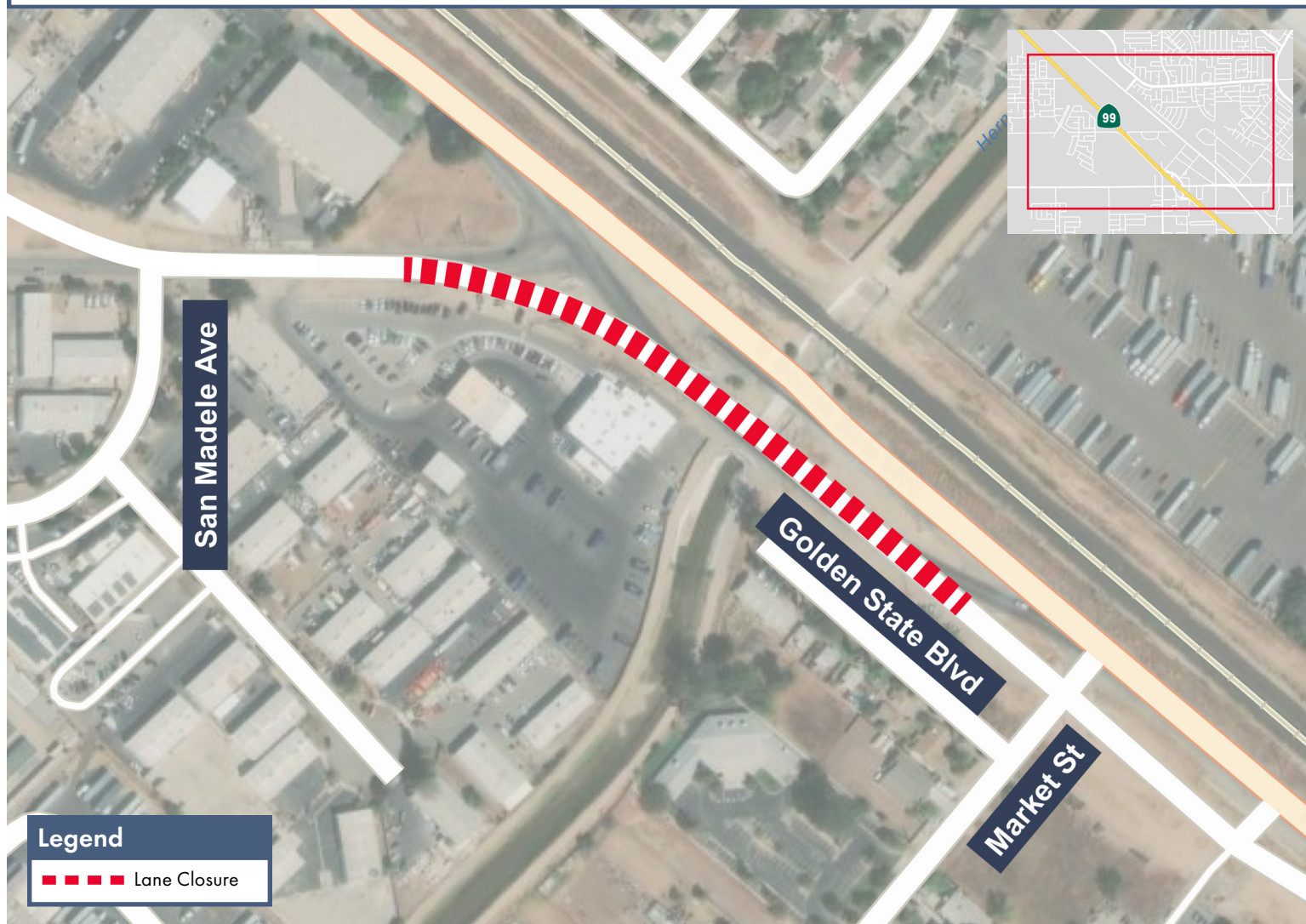
This work is part of Construction Package 1 (CP 1), the first 32-mile stretch of high-speed rail between Avenue 19 in Madera County and East American Avenue in Fresno County.

Closure And Detour Information:

Lane closure along Golden State Boulevard between San Madele and Market avenues in Fresno for road work.

Signage will be in place to direct traffic. Flaggers and signage will be in place to direct traffic.

Work is scheduled from 9 a.m. to 4 p.m. and will continue through Thursday, Nov. 20, 2025.



Contact Us:

Augie Blancas
California High-Speed Rail
(559) 720-6695
Augie.Blancas@hsr.ca.gov

Ramiro Diaz
California High-Speed Rail
(559) 577-2246
Ramiro.Diaz@hsr.ca.gov
Para más información en Español.

Yadira Lopez
Tutor-Perini / Zachry / Parsons
(888) 860-1868
ContactCP1@tpzpjv.com

Scan QR Code For More Information,
Connect To Our Websites And Follow
Us On Social Media. This Information
Is Subject To Change.

