



# CONSTRUCTION ALERT

## Road Closure Along Hanover Drive In Madera County

**Madera County, Calif.** – The California High-Speed Rail Authority (Authority), in cooperation with design-build contractor Tutor-Perini / Zachry / Parsons (TPZP), announces a road closure along Hanover Drive, between Pickfair Way and Ridgedale Drive in Madera County for road work. Work will include grading and paving of the roadway. Work will continue through Friday, Dec. 26, 2025.

*This work is part of Construction Package 1 (CP 1), the first 32-mile stretch of high-speed rail between Avenue 19 in Madera County and East American Avenue in Fresno County.*

### Closure And Detour Information:

Road closure along Hanover Drive, between Pickfair Way and Ridgedale Drive in Madera County for roadwork. Work will include grading and paving of the roadway.

**Work will continue through Friday, Dec. 26, 2025.**

#### Northbound Detour

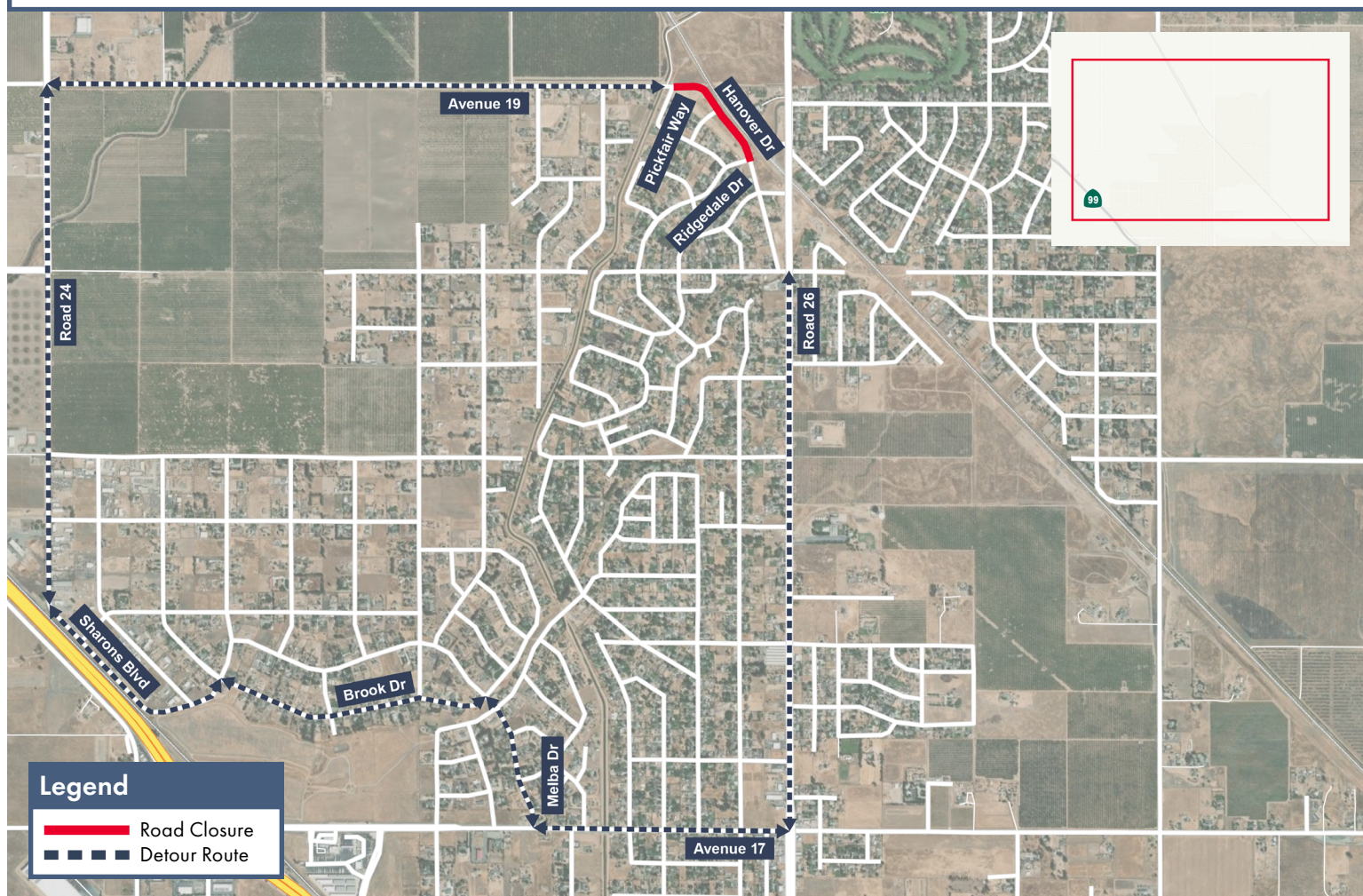
Northbound traffic along Hanover Drive will be detoured south on Road 26, west on Avenue 17, north on Melba Drive, west on Brook Drive to Sharons Boulevard, north on Road 24, then east Avenue 19 back to Hanover Drive.

Boulevard, north on Road 24, then east Avenue 19 back to Hanover Drive.

#### Southbound Detour

Southbound traffic along Hanover Drive will be detoured west on Avenue 19, south on Road 24, east on Sharons Boulevard to Brook Drive, south on Melba Drive, east on Avenue 17, then north on Road 26 to Hanover Drive.

**Signage will be in place to direct traffic.**



### Contact Us:

Augie Blancas  
California High-Speed Rail  
(559) 720-6695  
Augie.Blancas@hsr.ca.gov

Ramiro Diaz  
California High-Speed Rail  
(559) 577-2246  
Ramiro.Diaz@hsr.ca.gov  
Para más información en Español.

Yadira Lopez  
Tutor-Perini / Zachry / Parsons  
(888) 860-1868  
ContactCP1@tpzpjv.com

Scan QR Code For More Information,  
Connect To Our Websites And Follow  
Us On Social Media. This Information  
Is Subject To Change.

