



# CONSTRUCTION ALERT

## Intermittent Lane And Shoulder Closures Along Olive And West Avenues In Fresno

**Fresno, Calif.** – The California High-Speed Rail Authority (Authority), in cooperation with design-build contractor Tutor-Perini / Zachry / Parsons (TPZP), announces intermittent lane and shoulder closures along Olive and West avenues in Fresno for utility work. Work is scheduled from 9 p.m. to 6 a.m. and will continue through Friday, Jan. 16, 2026.

*This work is part of Construction Package 1 (CP 1), the first 32-mile stretch of high-speed rail between Avenue 19 in Madera County and East American Avenue in Fresno County.*

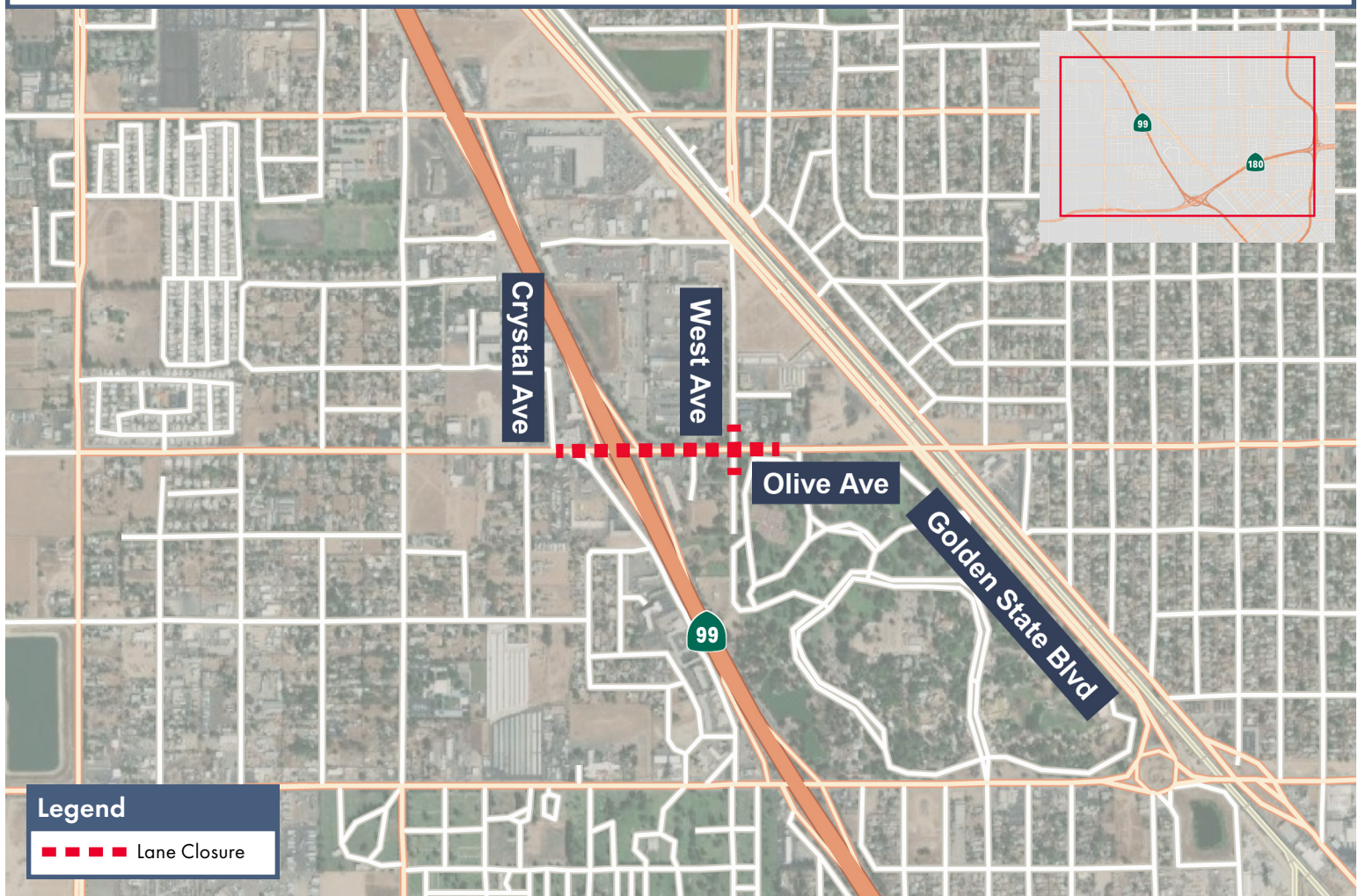
### Closure And Detour Information:

#### Multiple Closures:

- Intermittent lane and shoulder closures along Olive Avenue, between Crystal Avenue and Golden State Boulevard.
- Intermittent lane and shoulder closures along West Avenue, north and south of Olive Avenue.

**Work is scheduled from 9 p.m. to 6 a.m. and will continue through Friday, Jan. 16, 2026.**

**Signage will be in place to direct traffic. Access will be maintained for all businesses and property owners.**



#### Legend

■ ■ ■ ■ Lane Closure

### Contact Us:

Augie Blancas  
California High-Speed Rail  
(559) 720-6695  
Augie.Blancas@hsr.ca.gov

Ramiro Díaz  
California High-Speed Rail  
(559) 577-2246  
Ramiro.Diaz@hsr.ca.gov  
Para más información en Español.

Yadira Lopez  
Tutor-Perini / Zachry / Parsons  
(888) 860-1868  
ContactCP1@tpzpjv.com

Scan QR Code For More Information,  
Connect To Our Websites And Follow  
Us On Social Media. This Information  
Is Subject To Change.

