



CONSTRUCTION ALERT

Hauling Along Davis, Fowler, Elkhorn, Manning, Clovis, South, Cedar And Adams Avenues In Fresno County

Fresno County, Calif. – The California High-Speed Rail Authority (Authority), in cooperation with design-build contractor Dragados-Flatiron Joint Venture (DFJV), announces intermittent traffic impacts along Davis, Fowler, Elkhorn, Manning, Clovis, South, Cedar and Adams avenues in Fresno County to transport materials to a high-speed rail construction site. Hauling is scheduled intermittently between 6 a.m. and 6 p.m. starting Monday, Dec. 15 through Sunday, Dec. 21, 2025.

This work is part of Construction Package 2-3 (CP 2-3), the 65-mile stretch of high-speed rail between East American Avenue in Fresno County and one-mile north of the Tulare-Kern County line.

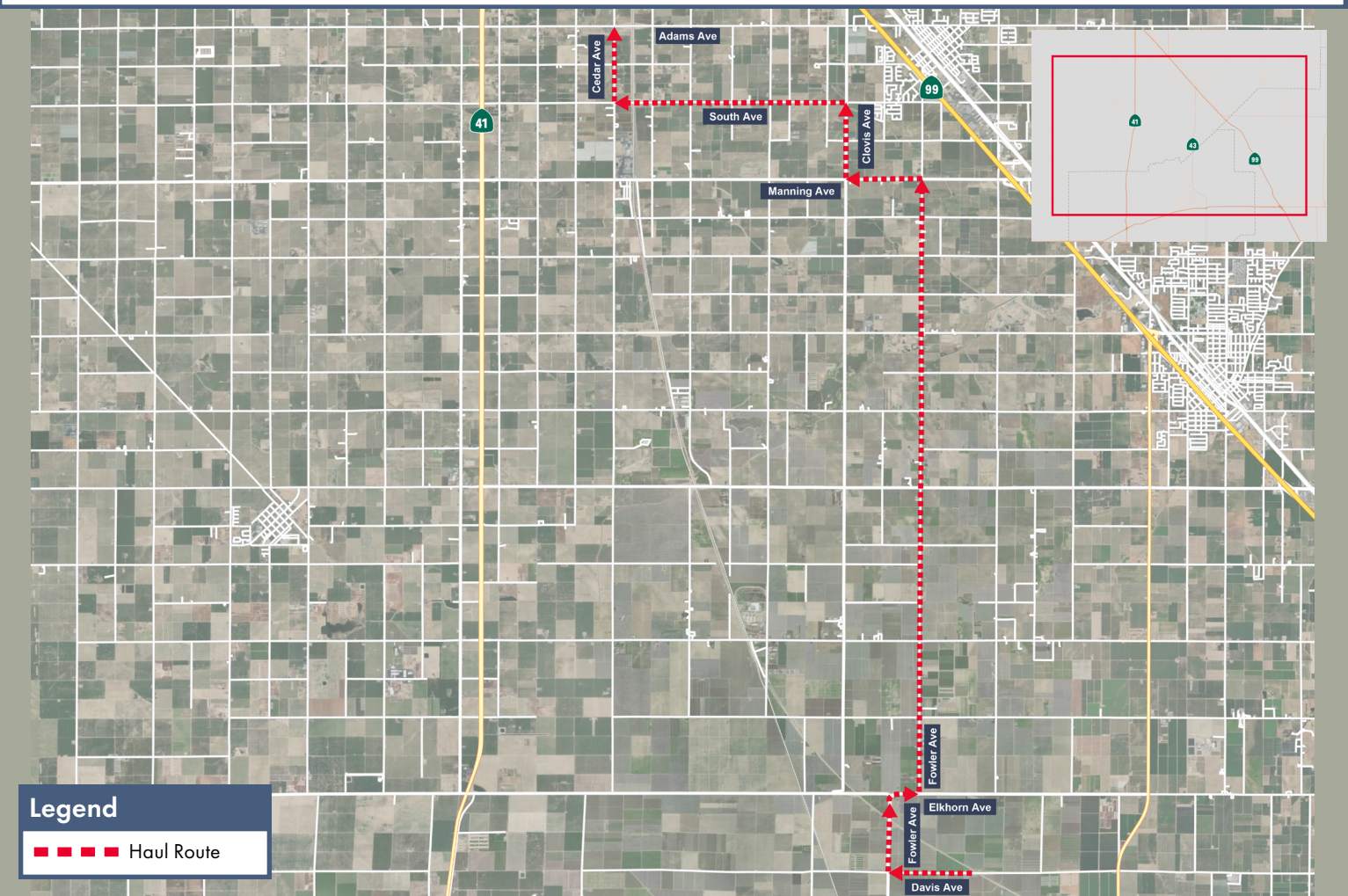
Closure And Detour Information (larger map on back page):

Hauling along Davis, Fowler, Elkhorn, Manning, Clovis, South, Cedar and Adams avenues in Fresno County to transport materials to a high-speed rail construction site.

Hauling is scheduled intermittently between 6 a.m. and 6 p.m. starting Monday, Dec. 15 through Sunday, Dec. 21, 2025.

Haul Route

Materials will be transported west on Davis Avenue, north on Fowler Avenue, east on Elkhorn Avenue, north on Fowler Avenue, west on Manning Avenue, north on Clovis Avenue, west on South Avenue, north on Cedar Avenue, then east on Adams Avenue to a high-speed rail construction site.



Contact Us:

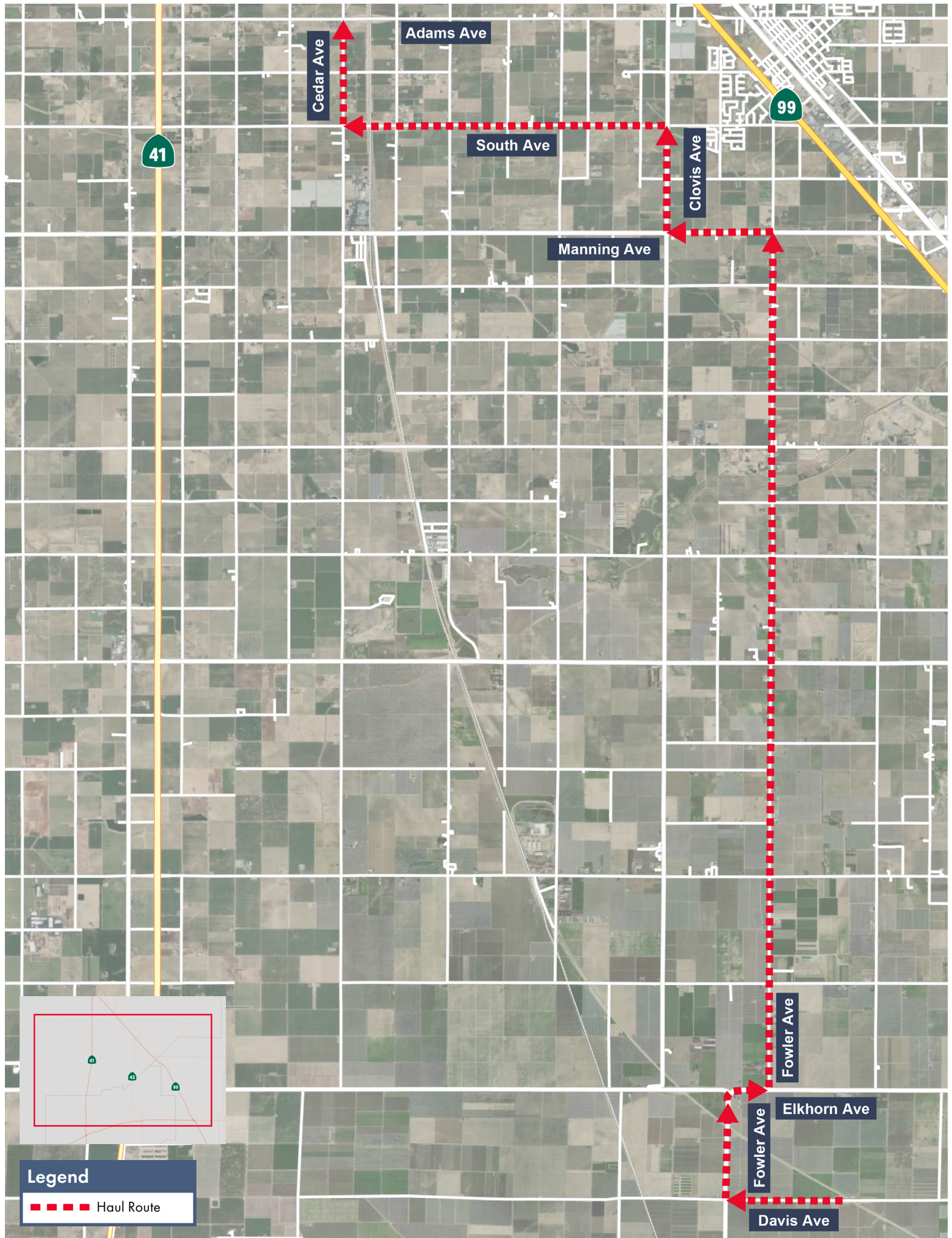
Augie Blancas
California High-Speed Rail
(559) 720-6695
Augie.Blancas@hsr.ca.gov

Ramiro Diaz
California High-Speed Rail
(559) 577-2246
Ramiro.Diaz@hsr.ca.gov
Para más información en Español.

Rachael Ray
Dragados-Flatiron Joint Venture
(559) 356-7234
pim@dfcp23.com

Scan QR Code For More Information,
Connect To Our Websites And Follow
Us On Social Media. This Information
Is Subject To Change.





Adams Ave

Cedar Ave

41

South Ave

99

Clovis Ave

Manning Ave

Fowler Ave

Elkhorn Ave

Fowler Ave

Davis Ave

Legend

■ ■ ■ ■ Haul Route