



CONSTRUCTION ALERT

Lane And Shoulder Closures Along G And Divisadero Streets In Fresno

Fresno, Calif. – The California High-Speed Rail Authority (Authority), in cooperation with design-build contractor Tutor-Perini / Zachry / Parsons (TPZP), announces lane and shoulder closures along G and Divisadero streets in Fresno for utility work. Work is scheduled from 9 a.m. to 4 p.m. and will continue through Friday, Jan. 23, 2026.

This work is part of Construction Package 1 (CP 1), the first 32-mile stretch of high-speed rail between Avenue 19 in Madera County and East American Avenue in Fresno County.

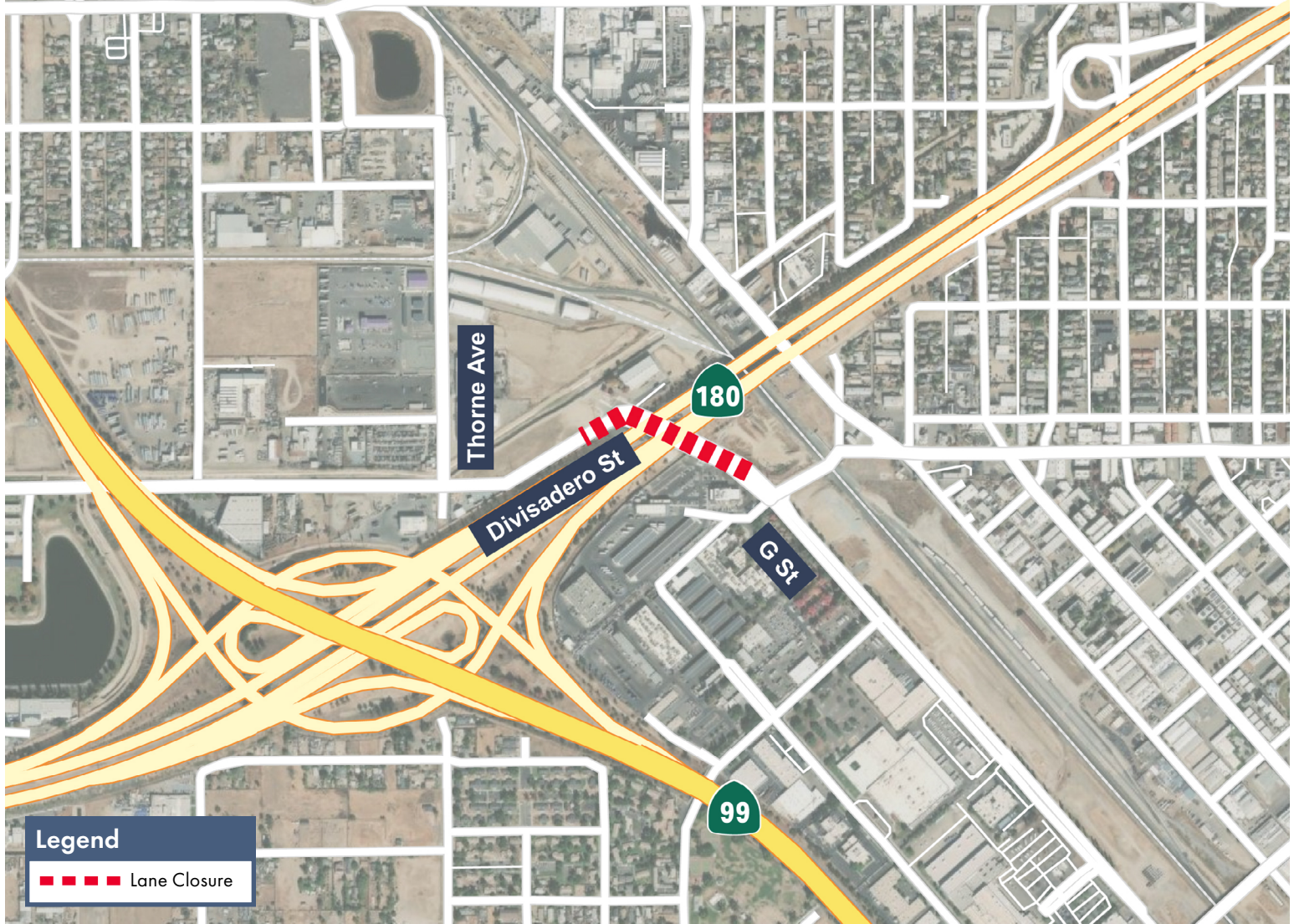
Closure And Detour Information:

Multiple Closures:

- Lane and shoulder closures along G Street, south of Divisadero Street;
- Lane closure along Divisadero Street, between Thorne Avenue and G Street.

Work is scheduled from 9 a.m. to 4 p.m. and will continue through Friday, Jan. 23, 2026.

Signage will be in place to direct traffic. Access will be maintained to all businesses and property owners.



Contact Us:

Augie Blancas
California High-Speed Rail
(559) 720-6695
Augie.Blancas@hsr.ca.gov

Ramiro Diaz
California High-Speed Rail
(559) 577-2246
Ramiro.Diaz@hsr.ca.gov
Para más información en Español.

Yadira Lopez
Tutor-Perini / Zachry / Parsons
(888) 860-1868
ContactCP1@tpzpjv.com

Scan QR Code For More Information,
Connect To Our Websites And Follow
Us On Social Media. This Information
Is Subject To Change.

