



# CONSTRUCTION ALERT

## Lane And Shoulder Closures Along G And Divisadero Streets In Fresno

**Fresno, Calif.** – The California High-Speed Rail Authority (Authority), in cooperation with design-build contractor Tutor-Perini / Zachry / Parsons (TPZP), announces lane and shoulder closures along G and Divisadero streets in Fresno for utility work. Work is scheduled from 9 a.m. to 4 p.m. starting Monday, Dec. 15, 2025, and will continue through Friday, Jan. 9, 2026.

*This work is part of Construction Package 1 (CP 1), the first 32-mile stretch of high-speed rail between Avenue 19 in Madera County and East American Avenue in Fresno County.*

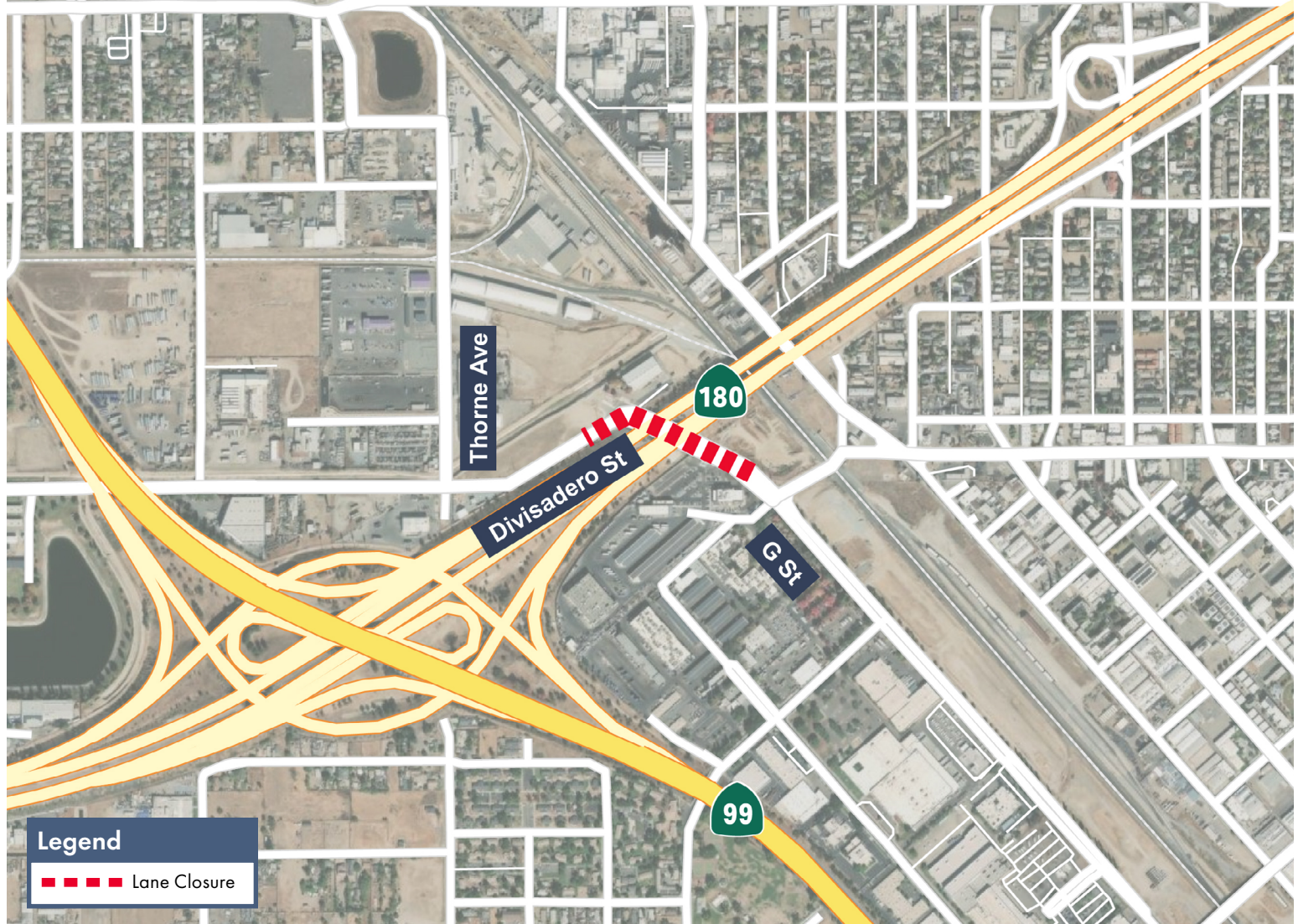
### Closure And Detour Information:

#### Multiple Closures:

- Lane and shoulder closures along G Street, south of Divisadero Street.
- Lane closure along Divisadero Street, between Thorne Avenue and G Street.

**Work is scheduled from 9 a.m. to 4 p.m. starting Monday, Dec. 15, 2025, and will continue through Friday, Jan. 9, 2026.**

**Signage will be in place to direct traffic. Access will be maintained to all businesses and property owners.**



### Contact Us:

Augie Blancas  
California High-Speed Rail  
(559) 720-6695  
Augie.Blancas@hsr.ca.gov

Ramiro Diaz  
California High-Speed Rail  
(559) 577-2246  
Ramiro.Diaz@hsr.ca.gov  
Para más información en Español.

Yadira Lopez  
Tutor-Perini / Zachry / Parsons  
(888) 860-1868  
ContactCP1@tpzpjv.com

Scan QR Code For More Information,  
Connect To Our Websites And Follow  
Us On Social Media. This Information  
Is Subject To Change.

