



CONSTRUCTION ALERT

Intermittent Lane And Shoulder Closures Along Olive And West Avenues In Fresno

Fresno, Calif. – The California High-Speed Rail Authority (Authority), in cooperation with design-build contractor Tutor-Perini / Zachry / Parsons (TPZP), announces intermittent lane and shoulder closures along Olive and West avenues in Fresno for utility work. Work is scheduled from 9 p.m. to 6 a.m. and will continue through Monday, Feb. 16, 2026.

This work is part of Construction Package 1 (CP 1), the first 32-mile stretch of high-speed rail between Avenue 19 in Madera County and East American Avenue in Fresno County.

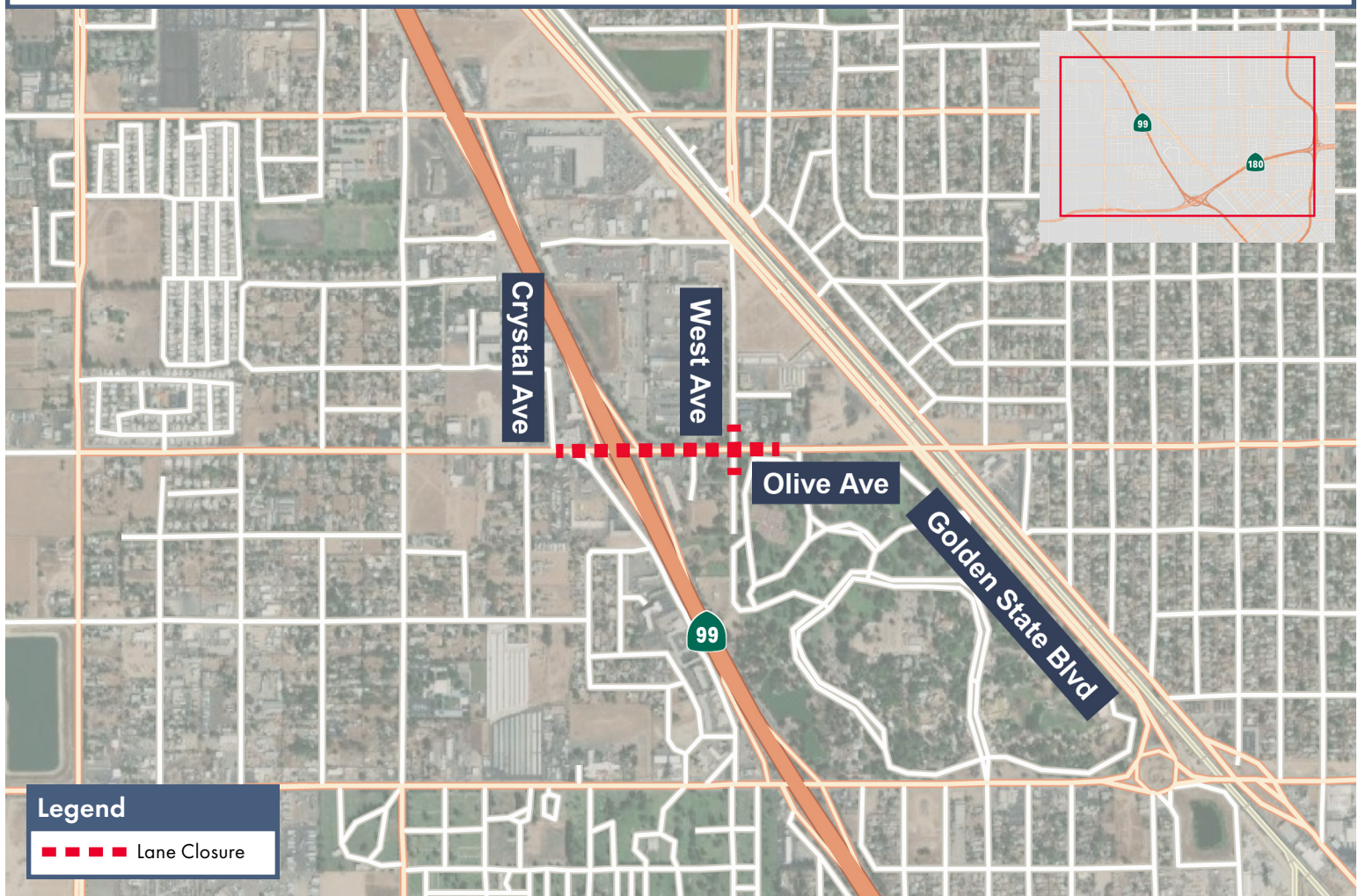
Closure And Detour Information:

Multiple Closures:

- Intermittent lane and shoulder closures along Olive Avenue, between Crystal Avenue and Golden State Boulevard;
- Intermittent lane and shoulder closures along West Avenue, north and south of Olive Avenue.

Work is scheduled from 9 p.m. to 6 a.m. and will continue through Monday, Feb. 16, 2026.

Signage will be in place to direct traffic. Access will be maintained for all businesses and property owners.



Legend

■ ■ ■ ■ Lane Closure

Contact Us:

Augie Blancas
California High-Speed Rail
(559) 720-6695
Augie.Blancas@hsr.ca.gov

Ramiro Díaz
California High-Speed Rail
(559) 577-2246
Ramiro.Diaz@hsr.ca.gov
Para más información en Español.

Yadira Lopez
Tutor-Perini / Zachry / Parsons
(888) 860-1868
ContactCP1@tpzpjv.com

Scan QR Code For More Information,
Connect To Our Websites And Follow
Us On Social Media. This Information
Is Subject To Change.

