



CONSTRUCTION ALERT

Hauling Along Clarkson, Conejo, Cedar And Nebraska Avenues In Fresno County

Fresno County, Calif. – The California High-Speed Rail Authority (Authority), in cooperation with design-build contractor Dragados-Flatiron Joint Venture (DFJV), announces intermittent traffic impacts along Clarkson, Conejo, Cedar and Nebraska Avenues to transport materials to a high-speed rail construction site. Hauling is scheduled from 7 a.m. to 5 p.m. on Wednesday, Feb. 4, 2026.

This work is part of Construction Package 2-3 (CP 2-3), the 65-mile stretch of high-speed rail between East American Avenue in Fresno County and one-mile north of the Tulare-Kern County line.

Closure And Detour Information:

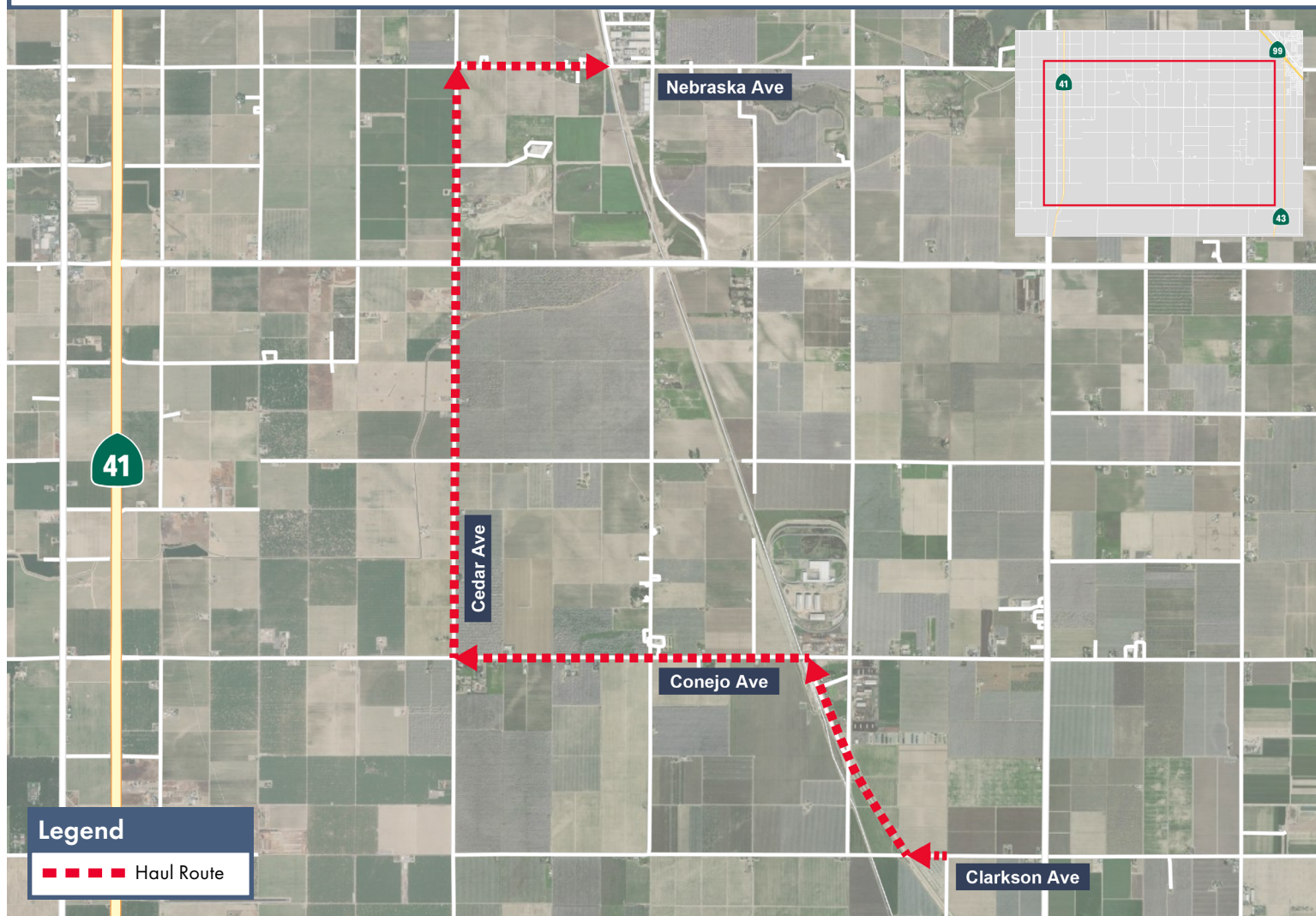
Intermittent traffic impacts along Clarkson, Conejo, Cedar and Nebraska Avenues in Fresno County to transport materials to a high-speed rail construction site.

Hauling is scheduled from 7 a.m. to 5 p.m. on Wednesday, Feb. 4, 2026.

Haul Route

Materials will be hauled west on Clarkson Avenue to a high-speed rail construction site; then west on Conejo Avenue, north on Cedar Avenue, then east on Nebraska Avenue to a high-speed rail construction site.

Drivers may experience delays.



Contact Us:

Augie Blancas
California High-Speed Rail
(559) 720-6695
Augie.Blancas@hsr.ca.gov

Ramiro Diaz
California High-Speed Rail
(559) 577-2246
Ramiro.Diaz@hsr.ca.gov
Para más información en Español.

Rachael Ray
Dragados-Flatiron Joint Venture
(559) 356-7234
pim@dfcp23.com

Scan QR Code For More Information,
Connect To Our Websites And Follow
Us On Social Media. This Information
Is Subject To Change.

