



# CONSTRUCTION ALERT

## Hauling Along Davis, Fowler, Elkhorn, Manning, Clovis, And South Avenues In Fresno County

**Fresno County, Calif.** – The California High-Speed Rail Authority (Authority), in cooperation with design-build contractor Dragados-Flatiron Joint Venture (DFJV), announces intermittent traffic impacts along Davis, Fowler, Elkhorn, Manning, Clovis and South avenues in Fresno County to transport materials to a high-speed rail construction site. Hauling is scheduled intermittently between 6 a.m. and 6 p.m. starting Monday, Jan. 12 through Sunday, Jan. 18, 2026.

*This work is part of Construction Package 2-3 (CP 2-3), the 65-mile stretch of high-speed rail between East American Avenue in Fresno County and one-mile north of the Tulare-Kern County line.*

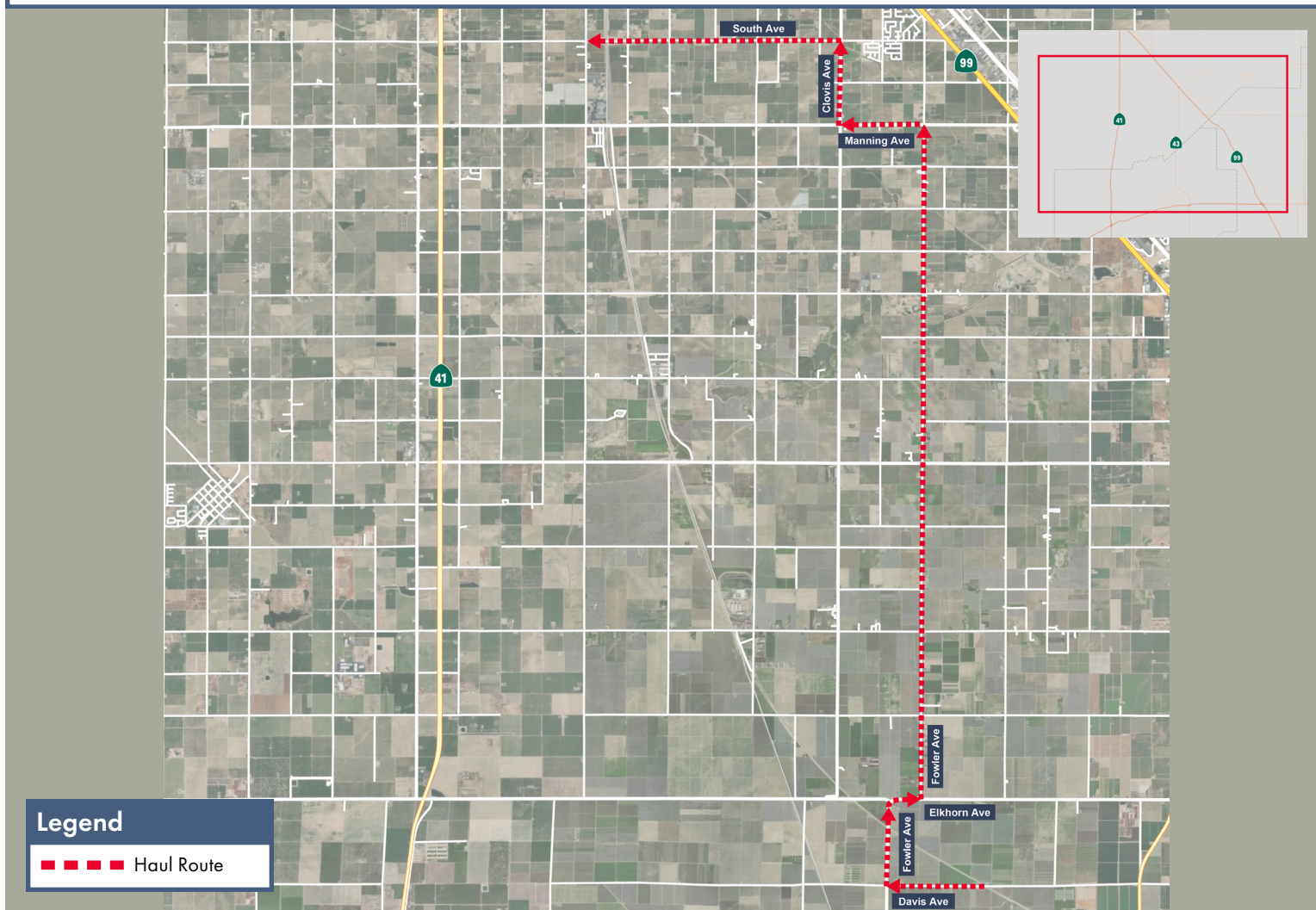
### Closure And Detour Information (larger map on back page):

Hauling along Davis, Fowler, Elkhorn, Manning, Clovis and South avenues in Fresno County to transport materials to a high-speed rail construction site.

**Hauling is scheduled intermittently between 6 a.m. and 6 p.m. starting Monday, Jan. 12 through Sunday, Jan. 18, 2026.**

#### Haul Route

Materials will be transported west on Davis Avenue, north on Fowler Avenue, east on Elkhorn Avenue, north on Fowler Avenue, west on Manning Avenue, north on Clovis Avenue, then west on South Avenue to a high-speed rail construction site.



### Contact Us:

Augie Blancas  
California High-Speed Rail  
(559) 720-6695  
Augie.Blancas@hsr.ca.gov

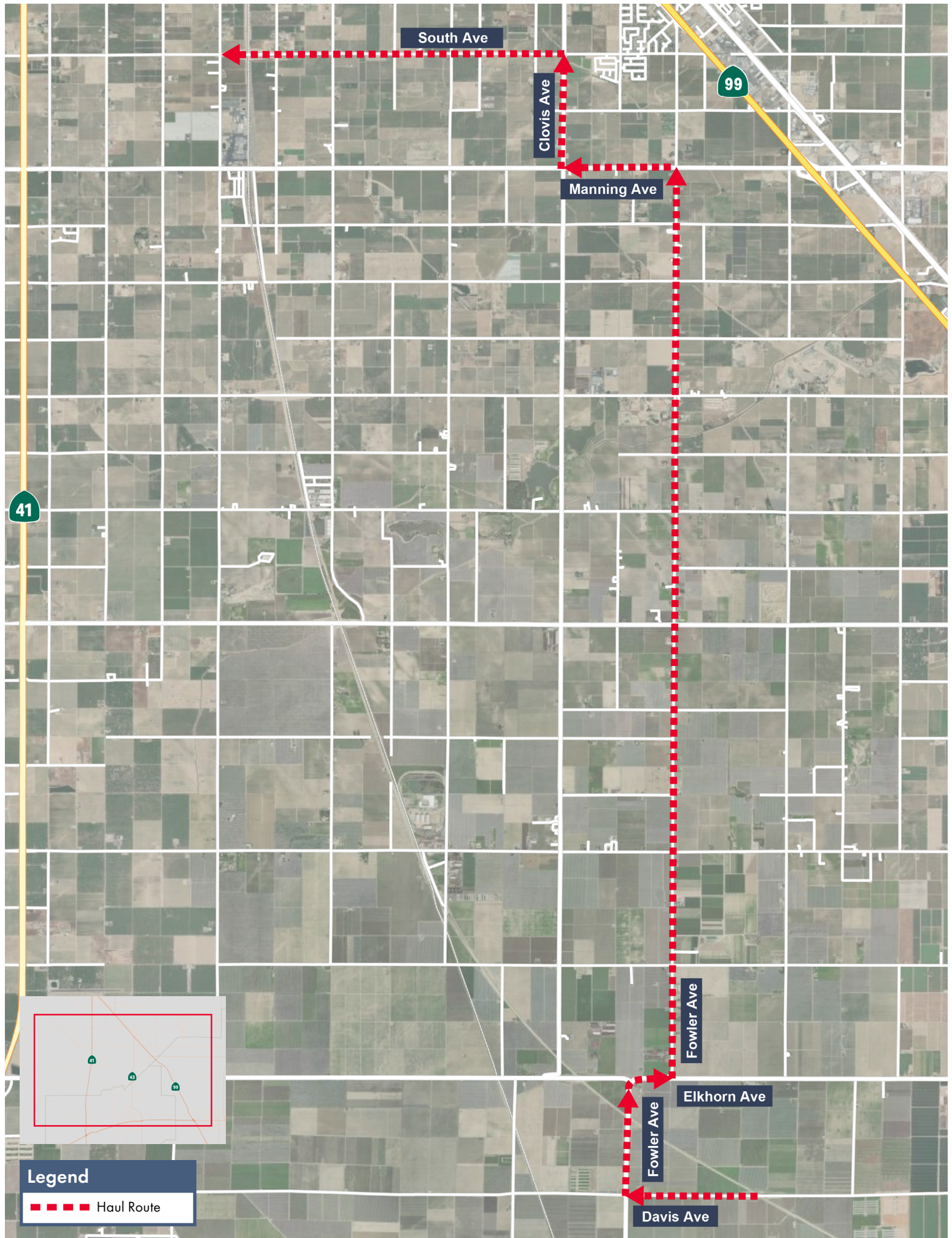
Ramiro Diaz  
California High-Speed Rail  
(559) 577-2246  
Ramiro.Diaz@hsr.ca.gov  
Para más información en Español.

Rachael Ray  
Dragados-Flatiron Joint Venture  
(559) 356-7234  
pim@dfcp23.com

Scan QR Code For More Information,  
Connect To Our Websites And Follow  
Us On Social Media. This Information  
Is Subject To Change.







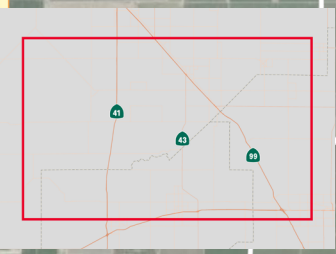
South Ave

Clovis Ave

Manning Ave

99

41



Legend

■ ■ ■ ■ ■ Haul Route