



CONSTRUCTION ALERT

Closure Along Weber Avenue In Fresno

Fresno, Calif. – The California High-Speed Rail Authority (Authority), in cooperation with design-build contractor Tutor-Perini / Zachry / Parsons (TPZP), announces a closure along Weber Avenue north of McCaffrey Avenue in Fresno for utility work. Work is scheduled from 9 a.m. to 4 p.m. starting Monday, Feb. 2, and will continue through Friday, March 27, 2026.

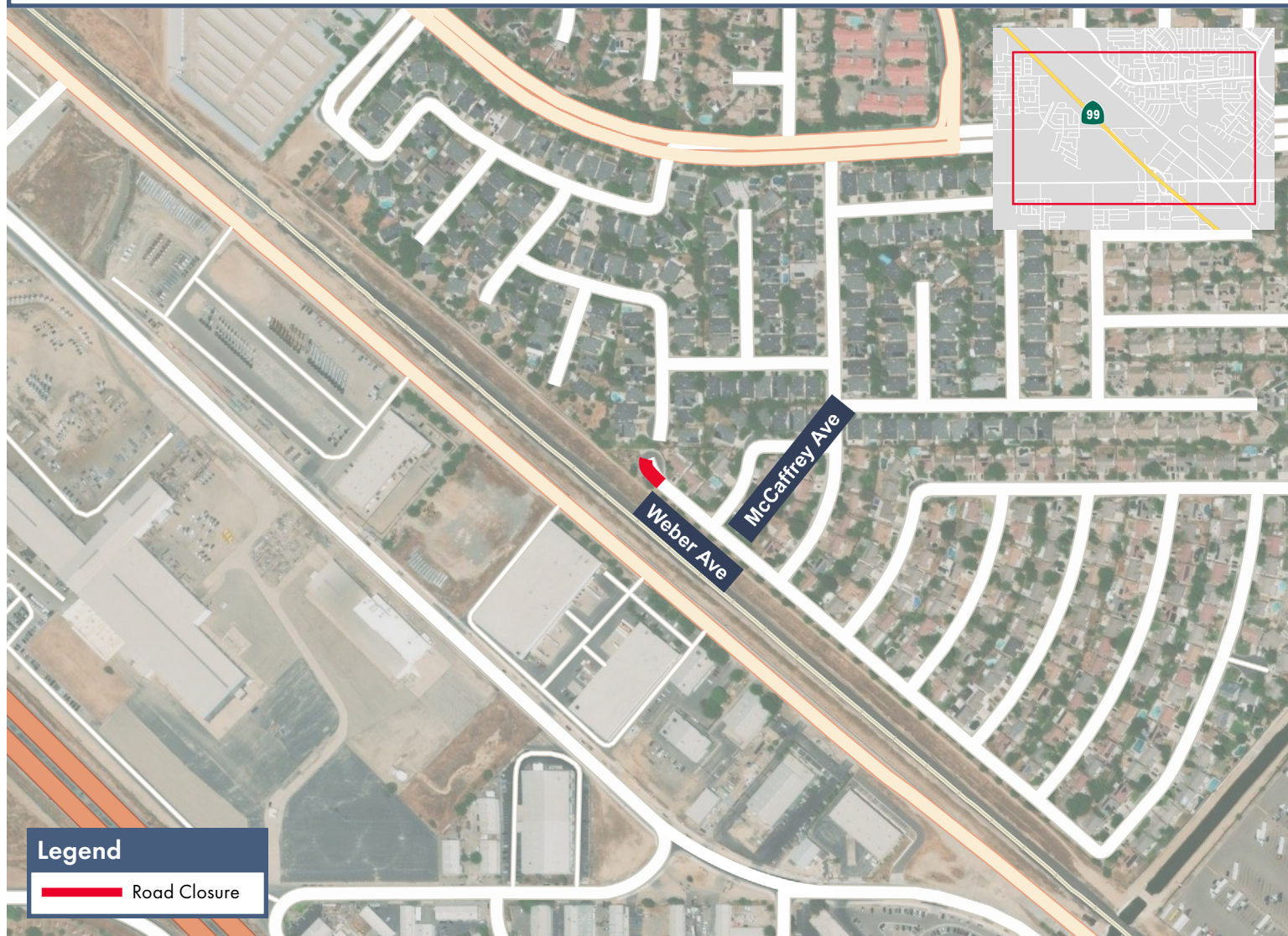
This work is part of Construction Package 1 (CP 1), the first 32-mile stretch of high-speed rail between Avenue 19 in Madera County and East American Avenue in Fresno County.

Closure And Detour Information:

Closure along Weber Avenue north of McCaffrey Avenue in Fresno for utility work.

Signage will be in place to direct traffic. Access will be maintained to all property owners.

Work is scheduled from 9 a.m. to 4 p.m. starting Monday, Feb. 2, and will continue through Friday, March 27, 2026.



Contact Us:

Augie Blancas
California High-Speed Rail
(559) 720-6695
Augie.Blancas@hsr.ca.gov

Ramiro Diaz
California High-Speed Rail
(559) 577-2246
Ramiro.Diaz@hsr.ca.gov
Para más información en Español.

Yadira Lopez
Tutor-Perini / Zachry / Parsons
(888) 860-1868
ContactCP1@tpzpjv.com

Scan QR Code For More Information,
Connect To Our Websites And Follow
Us On Social Media. This Information
Is Subject To Change.

