



CONSTRUCTION ALERT

Road Closure Along Excelsior Avenue In Kings County

Kings County, Calif. – The California High-Speed Rail Authority (Authority), in cooperation with design-build contractor Dragados-Flatiron Joint Venture (DFJV), announces a road closure along Excelsior Avenue, between Seventh and Eighth avenues in Kings County for ongoing work at a high-speed rail grade separation. Work is scheduled from Monday, March 9 through Monday, June 8, 2026.

This work is part of Construction Package 2-3 (CP 2-3), the 65-mile stretch of high-speed rail between East American Avenue in Fresno County and one-mile north of the Tulare-Kern County line.

Closure And Detour Information:

Road closure along Excelsior Avenue, between Seventh and Eighth avenues in Kings County for ongoing work at a high-speed rail grade separation.

Work is scheduled from Monday, March 9 through Monday, June 8, 2026.

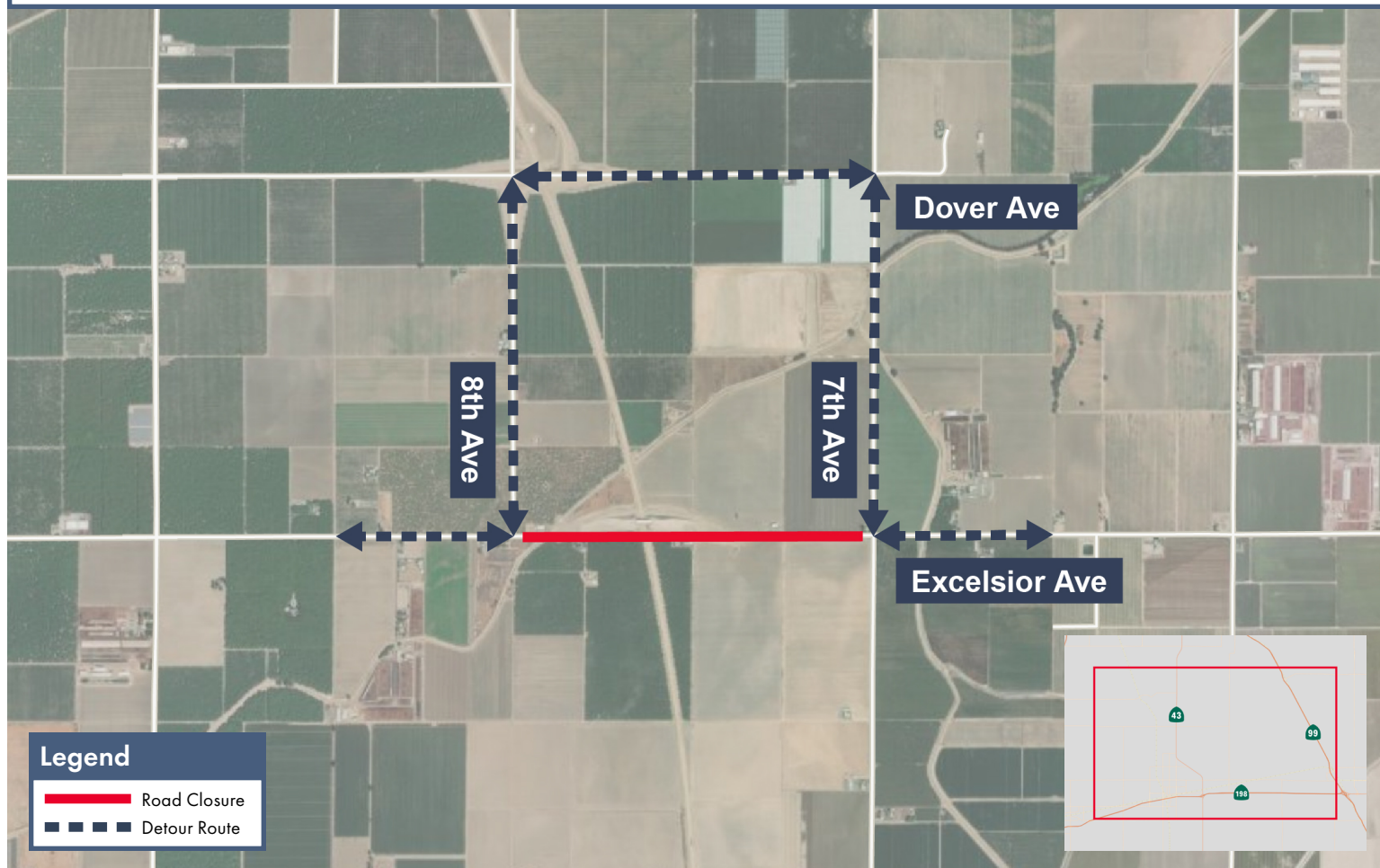
Westbound Excelsior Avenue Detour

Traffic going westbound on Excelsior Avenue will be detoured north on Seventh Avenue, west on Dover Avenue, then south on Eighth Avenue to Excelsior Avenue.

Eastbound Excelsior Avenue Detour

Traffic going eastbound on Excelsior Avenue will be detoured north on Eighth Avenue, east on Dover Avenue, then south on Seventh Avenue to Excelsior Avenue.

Signage and flaggers will be in place to direct traffic. Access will be maintained to all residents and property owners.



Contact Us:

Augie Blancas
California High-Speed Rail
(559) 720-6695
Augie.Blancas@hsr.ca.gov

Ramiro Diaz
California High-Speed Rail
(559) 577-2246
Ramiro.Diaz@hsr.ca.gov
Para más información en Español.

Rachael Ray
Dragados-Flatiron Joint Venture
(559) 356-7234
pim@dfcp23.com

Scan QR Code For More Information,
Connect To Our Websites And Follow
Us On Social Media. This Information
Is Subject To Change.

